



## Field Mead

**£1,725 Per Month**

Cosway Estates are pleased to offer for rent this lovely well-presented extended two double bedroom terraced house, located close to Mill Hill Broadway. This property consists of a separate spacious fitted kitchen/diner; spacious living room; modern bathroom and two good size double bedrooms with fitted wardrobes. The property also benefits from a having a rear garden. Close to the shops, restaurants and coffee shops on Mill Hill Broadway and to Mill Hill Thameslink train station. AVAILABLE LAST WEEK OF JULY 2024. VIEWINGS HIGHLY ADVISED.

### Viewing

Please contact our Mill Hill Office on 02089590011 if you wish to arrange a viewing appointment for this property or require further information.





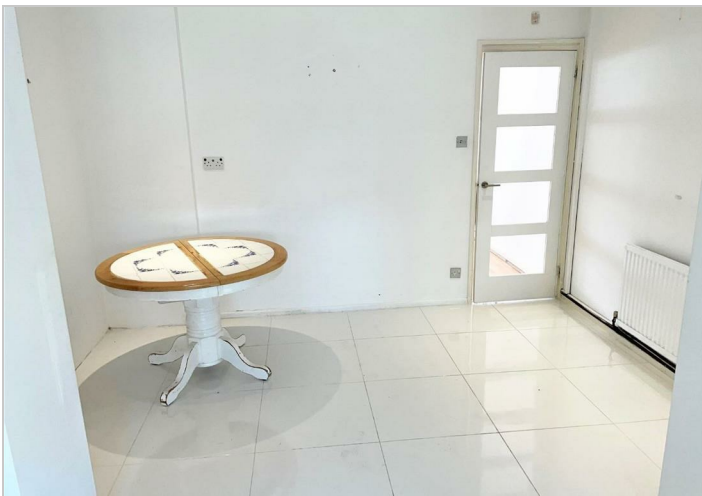
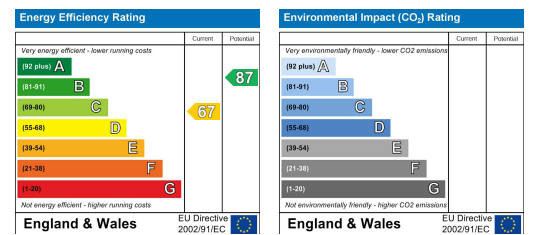
## Floor Plan



## Area Map



## Energy Efficiency Graph



These particulars, whilst believed to be accurate are set out as a general outline only for guidance and do not constitute any part of an offer or contract. Intending purchasers should not rely on them as statements of representation of fact, but must satisfy themselves by inspection or otherwise as to their accuracy. No person in this firm's employment has the authority to make or give any representation or warranty in respect of the property.