



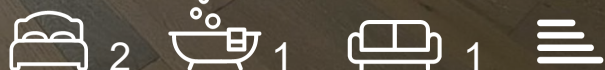
Sylvan Avenue

£1,900 Per Month

Cosway Estates are pleased to offer for rent this modernised spacious two bedroom second floor flat (top floor) in purpose built block. Wood flooring throughout. This property comprises of a hi-spec modern fitted kitchen; large reception room; two bedrooms and modern bathroom. This property has off-street parking and communal garden. Ideally located only moments from the shops, restaurants and coffee shops on Mill Hill Broadway and to Mill Hill Thameslink train station. AVAILABLE NOW. Viewings highly advised.

Viewing

Please contact our Mill Hill Office on 02089590011 if you wish to arrange a viewing appointment for this property or require further information.



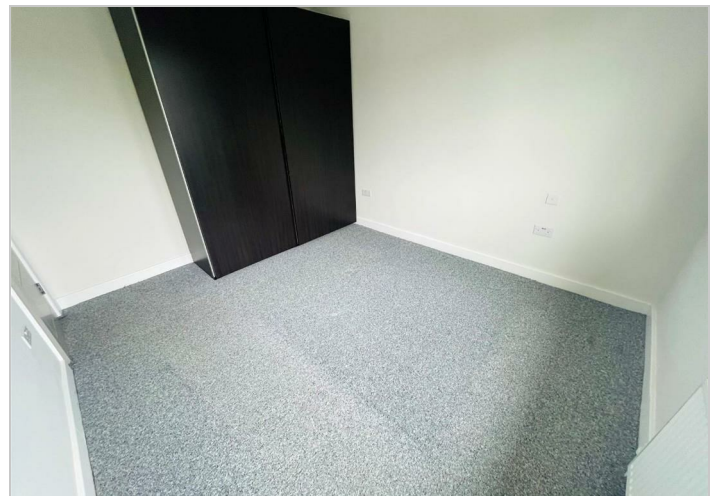
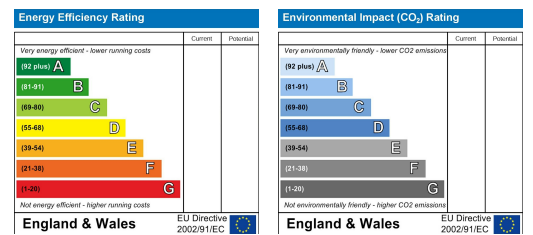
Floor Plan



Area Map



Energy Efficiency Graph



These particulars, whilst believed to be accurate are set out as a general outline only for guidance and do not constitute any part of an offer or contract. Intending purchasers should not rely on them as statements of representation of fact, but must satisfy themselves by inspection or otherwise as to their accuracy. No person in this firm's employment has the authority to make or give any representation or warranty in respect of the property.