



The Broadway

£1,450 Per Month

Cosway Estates are pleased to offer this lovely modern newly refurbished two double bedroom flat located amongst the shops, restaurants, coffee shops of Mill Hill Broadway. The property comprises of a modern open-plan fitted kitchen/reception room; two double bedrooms and shower room. This property also has a spacious entrance way which could be used as an office. Located within a moments walk from Mill Hill Broadway Thameslink train station. AVAILABLE NOW. VIEWINGS HIGHLY ADVISED.

Viewing

Please contact our Mill Hill Office on 02089590011 if you wish to arrange a viewing appointment for this property or require further information.



2



1



1



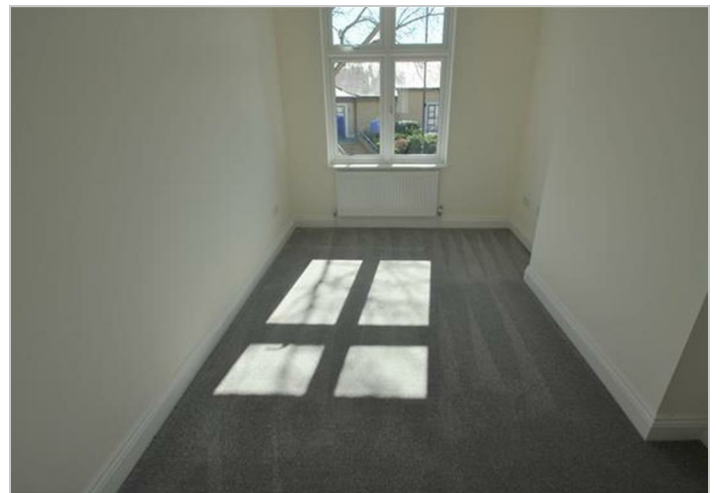
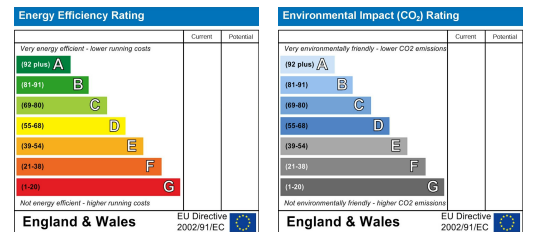
Floor Plan



Area Map



Energy Efficiency Graph



These particulars, whilst believed to be accurate are set out as a general outline only for guidance and do not constitute any part of an offer or contract. Intending purchasers should not rely on them as statements of representation of fact, but must satisfy themselves by inspection or otherwise as to their accuracy. No person in this firm's employment has the authority to make or give any representation or warranty in respect of the property.