



Marsh Lane

£2,450,000

CIRCA 4,000 SQ FT Welcome to this beautifully presented gated detached home on one of Mill Hill's most desirable roads.

Set over three floors, this spacious property offers five bedrooms, four bathrooms, and flexible living throughout.

The ground floor features a bright modern kitchen, dining room, large reception with garden access, utility room, guest bedroom with shower room, separate W/C, and garage access. Upstairs, you'll find a luxurious main suite, three further double bedrooms, and two bathrooms. The top floor offers a versatile loft room with its own W/C.

Backing onto greenbelt land, the private garden offers peace and seclusion. With a carriage driveway, off-street parking for multiple cars, and a short walk to Mill Hill Broadway and Thameslink Station, this home truly has it all.

Chain Free. Sole Agent.

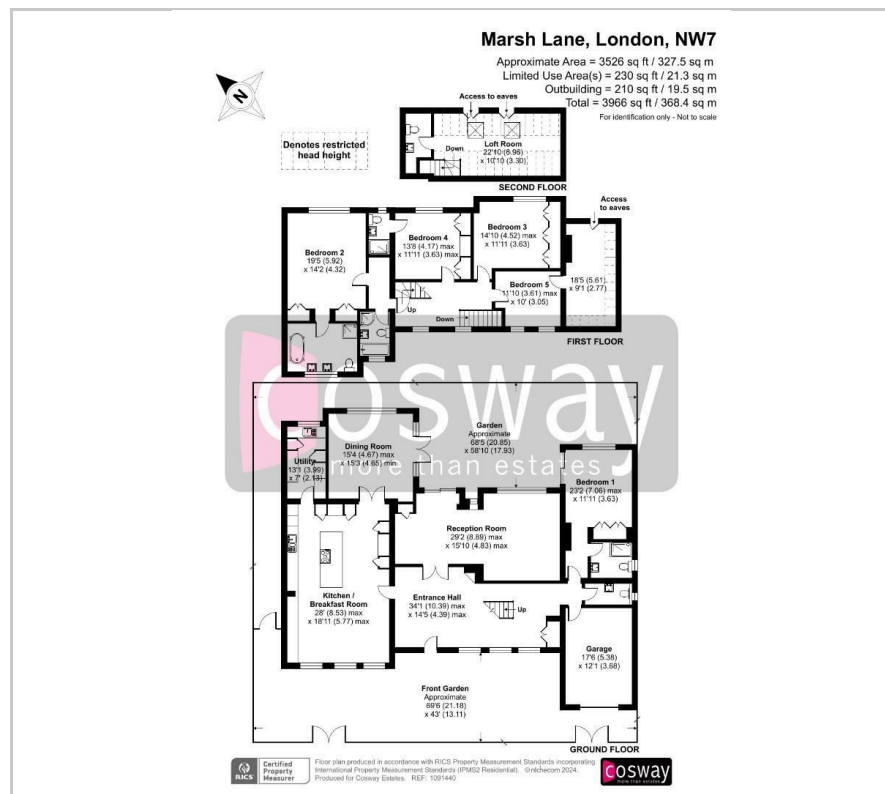
Viewing

Please contact our Mill Hill Office on 02089590011 if you wish to arrange a viewing appointment for this property or require further information.

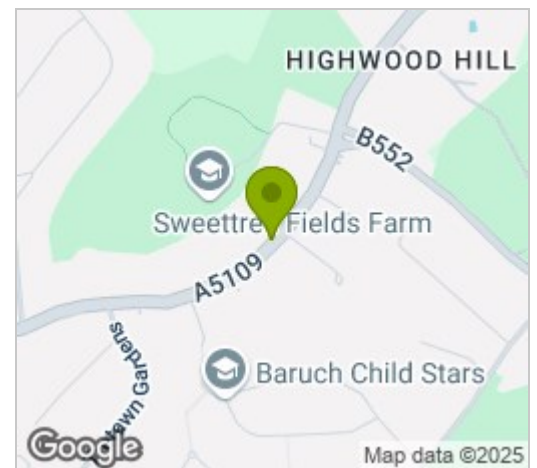
- CIRCA 4000 SQ FT
- 5 BEDROOMS
- 4 BATHROOMS
- BACKING ONTO GREENBELT
- GATED PARKING FOR MULTIPLE CARS
- CARRIAGE DRIVEWAY
- WALKING DISTANCE TO MILL HILL BROADWAY
- CLOSE TO EXCELLENT LOCAL SCHOOLS



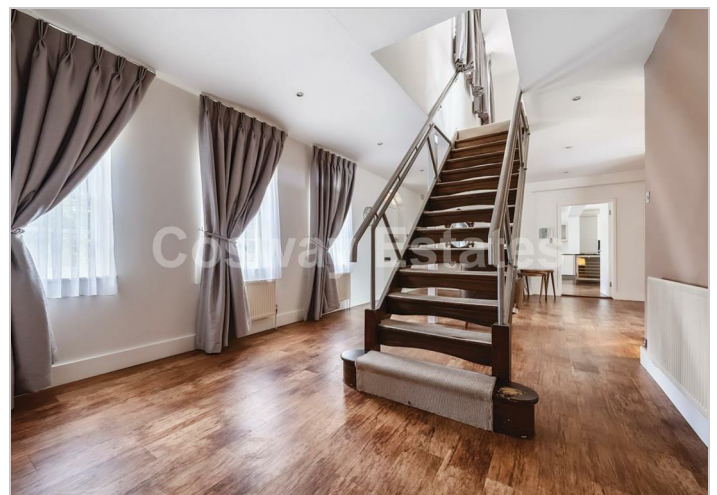
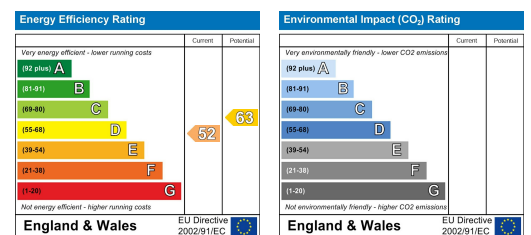
Floor Plan



Area Map



Energy Efficiency Graph



These particulars, whilst believed to be accurate are set out as a general outline only for guidance and do not constitute any part of an offer or contract. Intending purchasers should not rely on them as statements of representation of fact, but must satisfy themselves by inspection or otherwise as to their accuracy. No person in this firm's employment has the authority to make or give any representation or warranty in respect of the property.