



Marsh Lane

£3,150

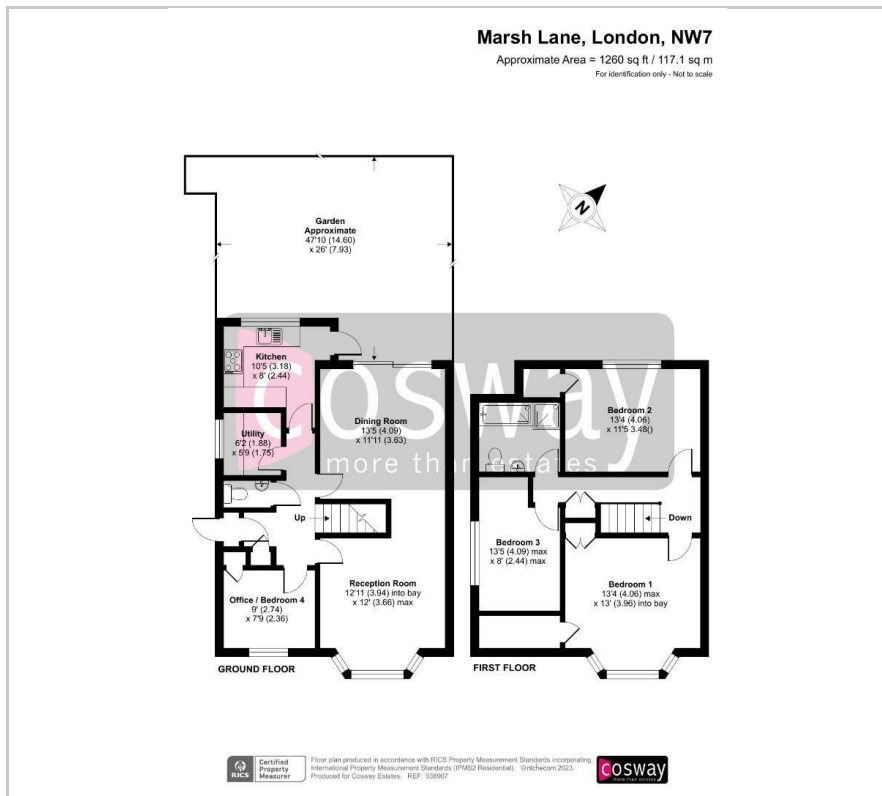
Cosway Estates are pleased to offer for rent this lovely large well presented four bedroom semi-detached property, situated on one of Mill Hill's premier roads. On the ground floor, the property comprises of spacious reception room; separate dining room; modern fitted kitchen, utility room; WC and bedroom/office. The first floor comprises of three double bedrooms and a family bathroom. The property also benefits from having a lovely rear garden and driveway which can accommodate 3 cars. Walking distance to Mill Hill Broadway, close to Mill Hill Golf Club and In the catchment area of Courtland school and Mill Hill County school. AVAILABLE NOW. Viewings highly advised.

Viewing

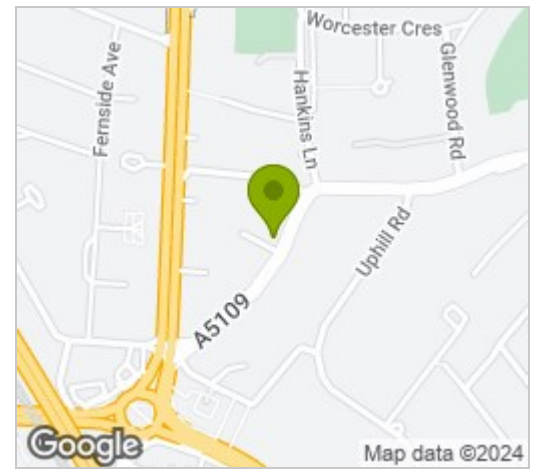
Please contact our Mill Hill Office on 02089590011 if you wish to arrange a viewing appointment for this property or require further information.



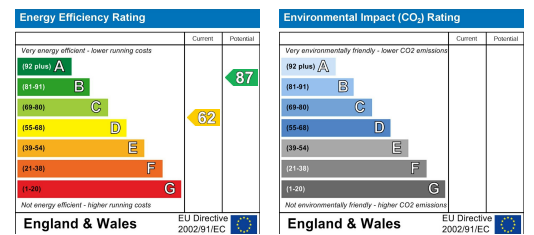
Floor Plan



Area Map



Energy Efficiency Graph



These particulars, whilst believed to be accurate are set out as a general outline only for guidance and do not constitute any part of an offer or contract. Intending purchasers should not rely on them as statements of representation of fact, but must satisfy themselves by inspection or otherwise as to their accuracy. No person in this firm's employment has the authority to make or give any representation or warranty in respect of the property.