



Albuhera Mews

£4,000

Cosway Estates are pleased to offer for rent this stunning large hi-spec five double bedroom semi-detached house, located within the beautiful landscaped Millbrook Park development. Comes fully furnished. This property comprises of a reception room; modern fully fitted kitchen/dining room; five double bedrooms; four bathrooms and downstairs WC. This property also benefits from having a secluded private garden and driveway for three cars. Located close to Mill Hill East tube station. **AVAILABLE NOW. VIEWINGS HIGHLY ADVISED.**

Viewing

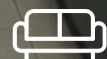
Please contact our Mill Hill Office on 02089590011 if you wish to arrange a viewing appointment for this property or require further information.



5



4



2



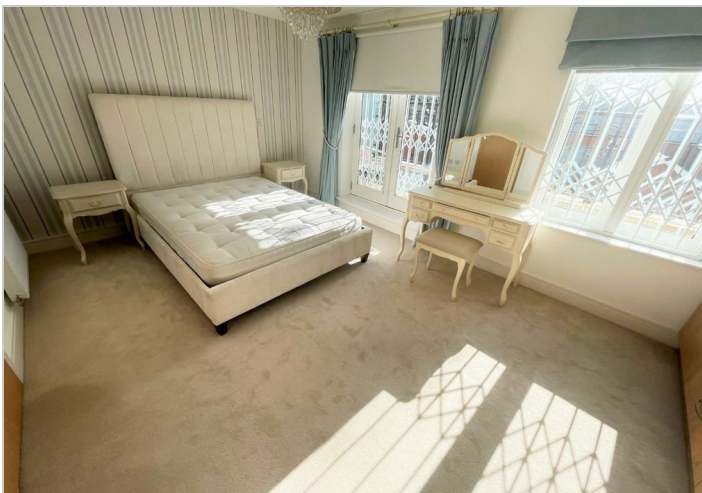
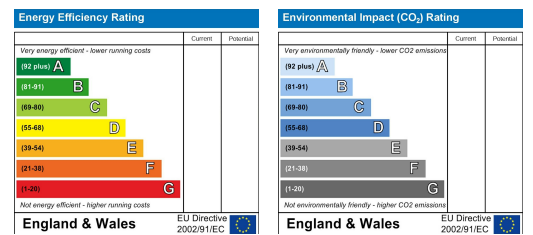
Floor Plan



Area Map



Energy Efficiency Graph



These particulars, whilst believed to be accurate are set out as a general outline only for guidance and do not constitute any part of an offer or contract. Intending purchasers should not rely on them as statements of representation of fact, but must satisfy themselves by inspection or otherwise as to their accuracy. No person in this firm's employment has the authority to make or give any representation or warranty in respect of the property.