



Charles Sevrigh Way

£1,195,000

Cosway Estates are pleased to offer for sale this stunning large, beautifully presented four bedroom house, set over three floors, situated within easy reach of Mill Hill East Underground station, Waitrose, Virgin Active and many other local amenities. The high-ceilinged entrance hall leads you to a spacious kitchen/diner/living area with access to a pretty easterly facing garden. The ground floor also comprises a guest cloakroom and integrated garage with built-in storage. The first floor comprises a large reception room with balcony overlooking the garden and a guest bedroom with en-suite. The master bedroom, with en-suite, is located on the second floor, along with two other double bedrooms and a family bathroom. Parking is convenient with an allocated parking space in front and also further parking at the back of the garden. The excellent condition of this property, would make it ideal for a family to move straight into. Chain Free.

Viewing

Please contact our Mill Hill Office on 020 8959 0011 if you wish to arrange a viewing appointment for this property or require further information.



4



3



2

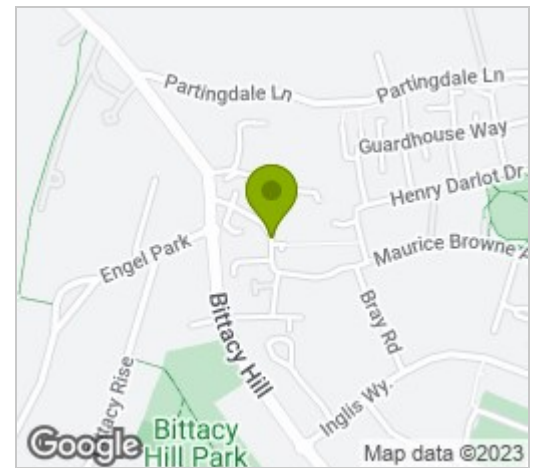


B

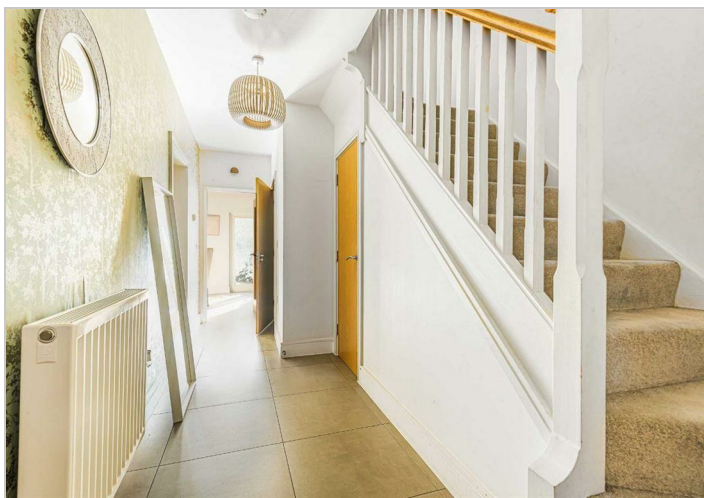
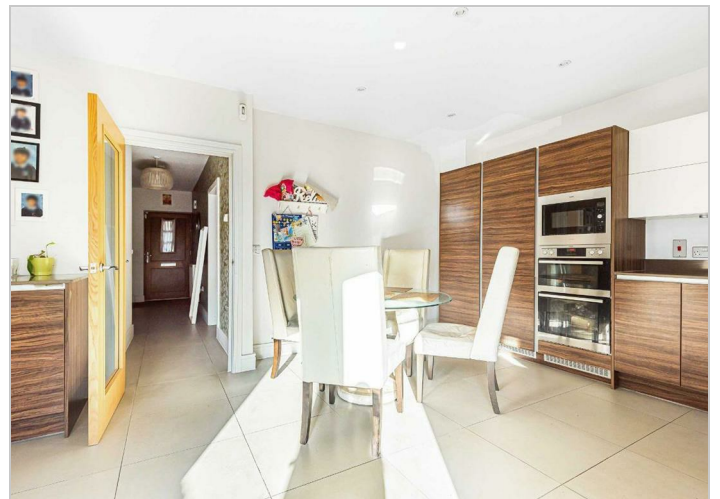
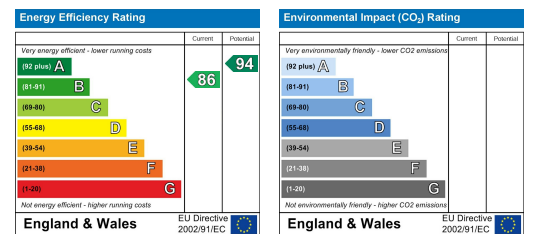
Floor Plan



Area Map



Energy Efficiency Graph



These particulars, whilst believed to be accurate are set out as a general outline only for guidance and do not constitute any part of an offer or contract. Intending purchasers should not rely on them as statements of representation of fact, but must satisfy themselves by inspection or otherwise as to their accuracy. No person in this firm's employment has the authority to make or give any representation or warranty in respect of the property.