



**Tudor Court**  
**Hatherley Crescent**  
Sidcup  
DA14 4HY

**Leasehold**

Offered for sale is this beautifully presented 2 bedroom retirement apartment with balcony overlooking the communal gardens. The property is very well presented so offers someone the chance to simply move straight in with no work required. It briefly comprises of: a secure communal entrance, communal lift, private front door, entrance hall with storage, 2 good sized bedrooms, a modern stylish shower room, and a good sized lounge that flows nicely into the kitchen and also gives access to the balcony overlooking the communal gardens.

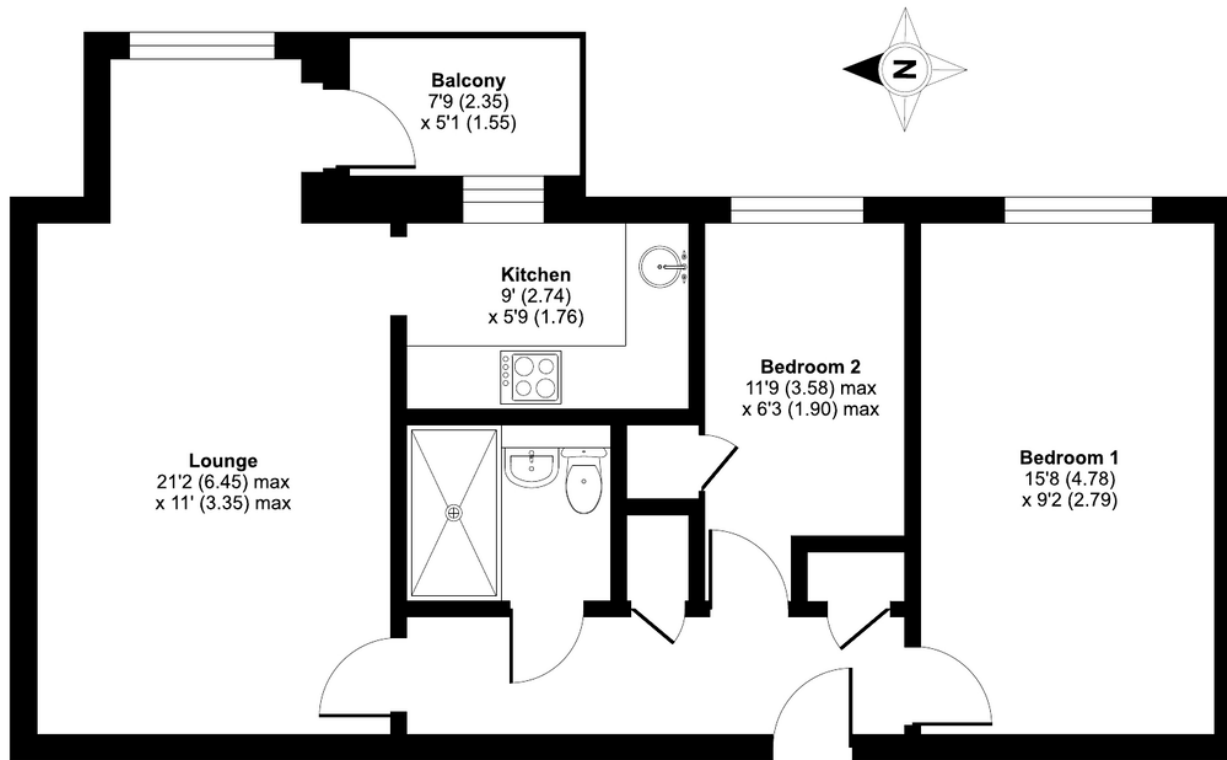
Tudor Court is a very sought after retirement development that features its own communal lounge, gardens and offers plenty of activities for the residents if they want to get involved. It is located just a short walk from Sidcup train station, shops, bus routes, parks and restaurants. \*chain free\*

**Local Authority** Bexley London Borough  
Council  
**Council Tax Band** C  
**EPC Rating** C

**Lease** 60 years remaining  
**Service Charge** £3,456 per annum

## Tudor Court, Hatherley Crescent, Sidcup, DA14

Approximate Area = 613 sq ft / 56.9 sq m  
For identification only - Not to scale



FIRST FLOOR

**Drewery Property Consultants**  
128 Station Road  
Sidcup  
Kent  
DA15 7AF

**Contact**  
020 8269 6605  
info@drewery.co.uk  
www.drewery.co.uk

**Agents Note:** Whilst every care has been taken to prepare these particulars, they are for guidance purposes only. All measurements are approximate and are for general guidance purposes only and whilst every care has been taken to ensure their accuracy, they should not be relied upon and potential buyers/tenants are advised to recheck the measurements.