

£1,300 pcm

22D Granville Road, Kent, DA14 4BX



- SPACIOUS 1 BEDROOM 1ST FLOOR CONVERSION FLAT
- GAS CENTRAL HEATING, DOUBLE GLAZING, NEUTRAL DECOR & ENTRY PHONE SYSTEM
- GOOD SIZE LIVING ROOM WITH WINDOWS TO REAR
- KITCHEN WITH A RANGE OF WALL & BASE UNITS
- DOUBLE SIZE BEDROOM
- FULLY TILED BATHROOM WITH OVERBATH SHOWER
- ALLOCATED PARKING SPACE & COMMUNAL GARDENS

To view all our homes: www.drewery.co.uk





SPACIOUS 1 BEDROOM 1ST FLOOR CONVERSION FLAT: UNFURNISHED

A spacious one bedroom first floor conversion flat. Situated in a popular residential road and close to all local amenities including: shops, high street, bus routes and within walking distance of Sidcup mainline railway station.

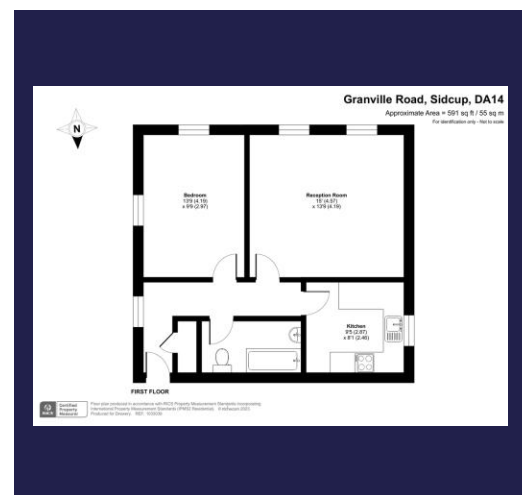
The property benefits from entry phone system, double glazed windows, gas central heating and a neutral decor throughout.

The accommodation comprises: Entrance hallway. Good size living room with windows to rear. Kitchen fitted with a range of wall and base units, work surfaces, stainless steel sink with drainer, electric oven, gas hob, extractor unit, fridge / freezer and washing machine. Double size bedroom. Fully tiled bathroom with hand basin, bath with overbath shower and W.C. Externally there is an allocated parking space and communal gardens to the rear.

The property is available mid / end June.

Restrictions: no pets, smokers, children, students or sharers.

Would ideally suit a professional couple or single person.



Energy Efficiency Rating C.
(70/75) EIR 70/77

If you would like to view please contact Drewery Property Consultants on **020 8269 6600**

These particulars are intended to give a fair description of the property but their accuracy cannot be guaranteed. Intending tenants should not rely on them as statements of representation of fact, but must satisfy themselves by inspection or otherwise as to their accuracy. All measurements quoted are approximate. None of the appliances/services have been tested by ourselves.

*Important - Admin fees apply per applicant. Please visit our website www.drewery.co.uk (information for tenants - Fees & other costs) or contact our staff.