



Hurst Road

Bexley
DA5 3DZ

Freehold

Deceptively spacious 3 bedroom mid terrace house

Set back from main road via pedestrian path
Convenient for local schools, parks and local amenities

Transport and motorway links close by
Front and rear gardens
Downstairs shower room and upstairs bathroom





FULL DESCRIPTION

Offered for sale is this deceptively spacious 3 bedroom terrace house. The property sits in a popular location that offers a short walk to some of the borough's most popular schools as well as giving access to local parks, shops and transport links including Sidcup and Albany Park train stations. The house would make a great first house for some or for someone looking to downsize.

It briefly comprises: Entrance porch, entrance hall, a deceptively spacious kitchen, a rear lounge with access out onto the garden and downstairs shower room. To the first floor is and 3 good sized bedrooms.

Externally there are front and rear gardens.

Internal viewing comes highly recommended to as to appreciate the space this house has to offer.

Directions

From our Sidcup office turn right and proceed along Station Road, at the traffic lights turn right into Hurst Road and the property can be found shortly afterwards on the left hand side. Closest Stations: Albany Park (0.39 mi) Sidcup (0.82 mi) Bexley (1.17 mi) Closest Schools: Hurst Primary School (0.29 mi) Royal Park Primary Academy (0.56 mi) Hurstmere School (0.78 mi)



Local Authority
Council Tax Band
EPC Rating

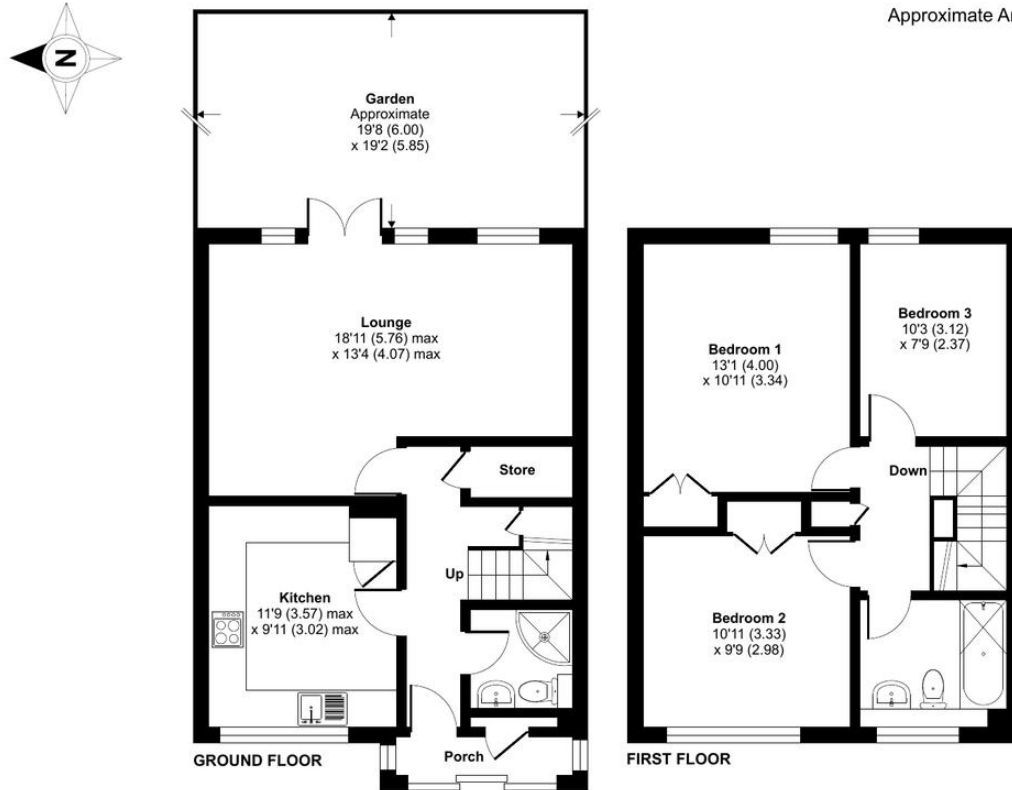
Bexley London Borough Council

D
C

Hurst Road, Bexley, DA5

Approximate Area = 1006 sq ft / 93.4 sq m

For identification only - Not to scale



Floor plan produced in accordance with RICS Property Measurement 2nd Edition, Incorporating International Property Measurement Standards (IPMS2 Residential). © nrichcom 2024. Produced for Drewery. REF: 1265789

Drewery Property Consultants
128 Station Road
Sidcup
Kent
DA15 7AF

Contact
020 8269 6605
info@drewery.co.uk
www.drewery.co.uk

Agents Note: Whilst every care has been taken to prepare these particulars, they are for guidance purposes only. All measurements are approximate and are for general guidance purposes only and whilst every care has been taken to ensure their accuracy, they should not be relied upon and potential buyers/tenants are advised to recheck the measurements.

