



Old Farm Avenue

Sidcup
DA15 8AH

Freehold

Four bedroom semi detached extended chalet style house
Short walk to Sidcup station, shops and schools
Requires updating throughout
Chain Free
Ideal family home
Off street parking for several cars and garage
Good sized rear garden





FULL DESCRIPTION

A 4 bedroom, 2 bathroom, semi detached extended chalet house that sits just a short walk from Sidcup train station, local shops and some highly sought after schools. The house does require updating throughout, but benefits from offering plenty of space and we feel it would make a great family home.

The property briefly comprises of: entrance hall, a spacious front lounge, second reception that flows into the rear kitchen, overlooking the garden. There is also downstairs bathroom and then on the first floor an additional shower room along with 4 good sized bedrooms.

Externally there is off street parking for several cars, a garage and a good sized rear garden.
Chain Free



Directions

From our Sidcup office, proceed straight over into Old Farm Avenue and the property can be found on the left hand side. Closest Stations: Sidcup (0.21 mi) Albany Park (1.15 mi) New Eltham (1.20 mi) Closest Schools: Holy Trinity Lamorbey Church of England School (0.18 mi) Chislehurst and Sidcup Grammar School 0.38 mi)

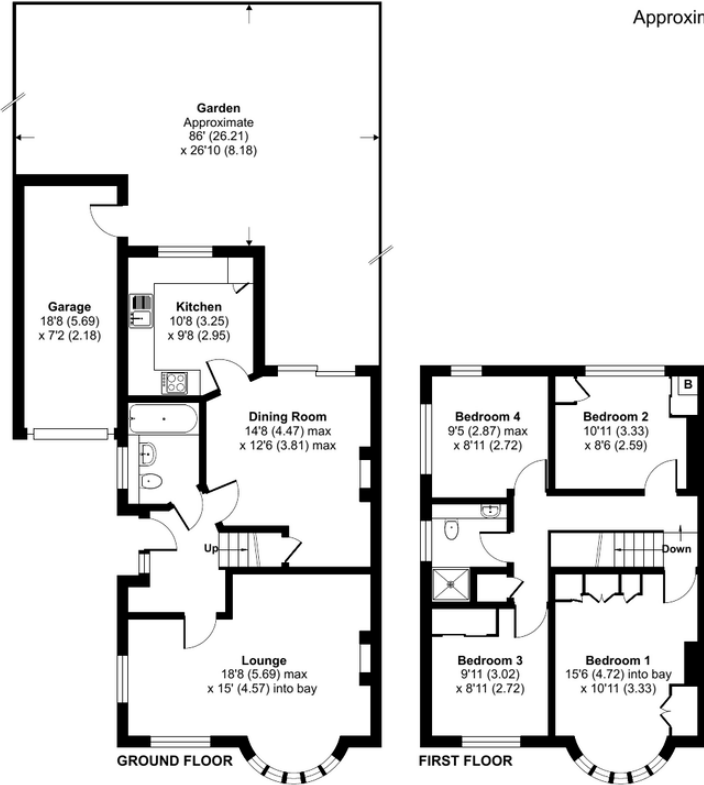


Local Authority
Council Tax Band
EPC Rating

Bexley London Borough Council
F
E

Old Farm Avenue, Sidcup, DA15

Approximate Area = 1192 sq ft / 110.7 sq m
Garage = 134 sq ft / 12.4 sq m
Total = 1326 sq ft / 123.1 sq m
For identification only - Not to scale



 Floor plan produced in accordance with RICS Property Measurement 2nd Edition, Incorporating International Property Measurement Standards (IPMS2 Residential). © nixhecom 2024. Produced for Drewery. REF: 1202792

Drewery Property Consultants
128 Station Road
Sidcup
Kent
DA15 7AF

Contact
020 8269 6605
info@drewery.co.uk
www.drewery.co.uk

Agents Note: Whilst every care has been taken to prepare these particulars, they are for guidance purposes only. All measurements are approximate and are for general guidance purposes only and whilst every care has been taken to ensure their accuracy, they should not be relied upon and potential buyers/tenants are advised to recheck the measurements.