



**Goose Green Close**

Orpington

BR5 2TZ

**Freehold**

Two bedroom mid terrace house

Chain Free

Freehold

Gardens front and rear

Easy access for local transport links

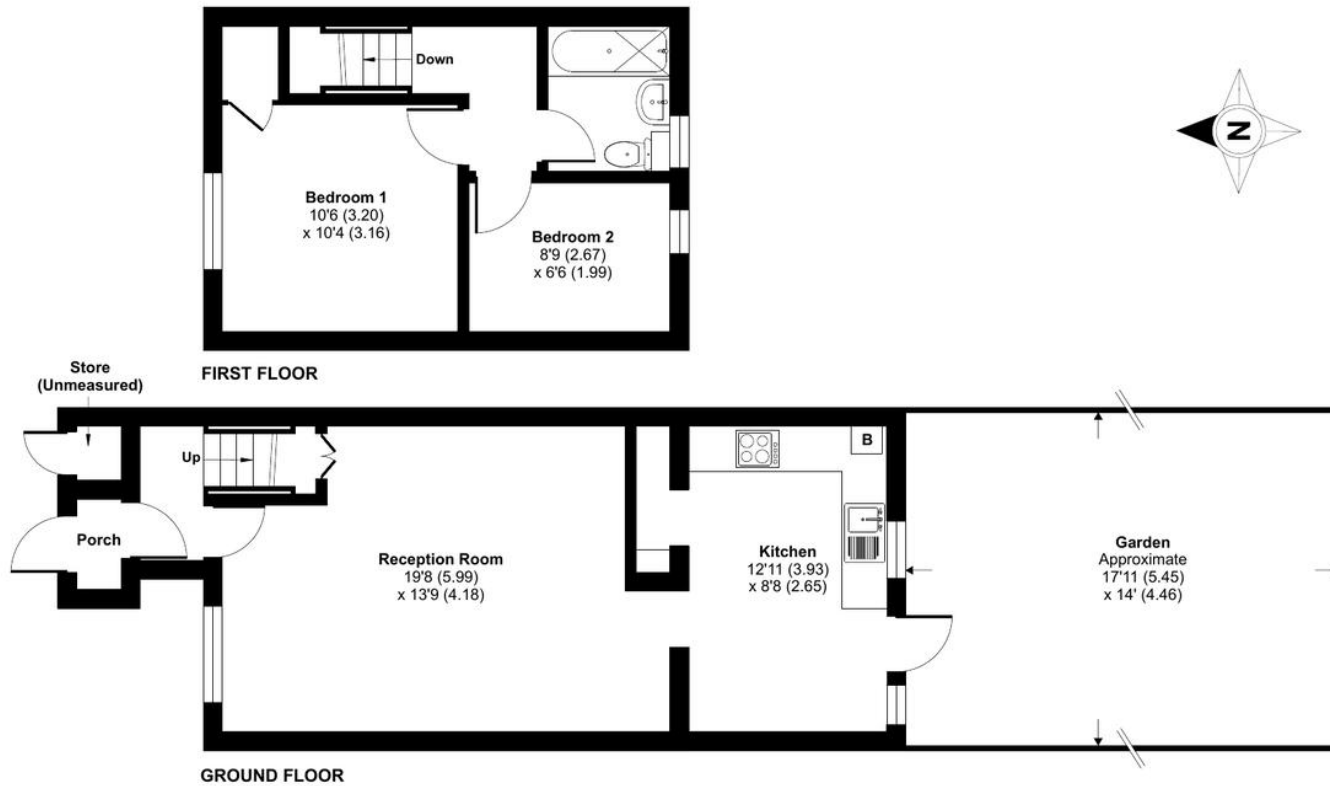
Convenient for schools and shops

**Local Authority** Bromley London Borough  
Council  
**Council Tax Band C**  
**EPC Rating C**

## Goose Green Close, BR5

Approximate Area = 685 sq ft / 63.6 sq m (exclude store)

For identification only - Not to scale



**Drewery Property Consultants**  
128 Station Road  
Sidcup  
Kent  
DA15 7AF

**Contact**  
020 8269 6605  
info@drewery.co.uk  
www.drewery.co.uk

**Agents Note:** Whilst every care has been taken to prepare these particulars, they are for guidance purposes only. All measurements are approximate and are for general guidance purposes only and whilst every care has been taken to ensure their accuracy, they should not be relied upon and potential buyers/tenants are advised to recheck the measurements.