



**Gattons Way**

Sidcup  
DA14 5EW

**Freehold**

3 bedroom semi detached house

Easy access to local schools and transport links

Short walk to popular Foots Cray Meadows

Off street parking

Garden with patio seating area





## FULL DESCRIPTION

Offered for sale is this 3 bedroom semi detached house that offers access to local schools, transport links and is also a short walk from the popular Foots Cray Meadows.

The house briefly comprises: entrance hall, lounge, dining room, kitchen, utility room. The first floor has 3 bedrooms and a family bathroom.

Externally there is a lawned rear garden with patio seating area, front garden, off street parking and side access. This is a great chance to purchase a semi detached 3 bedroom house that is well presented.







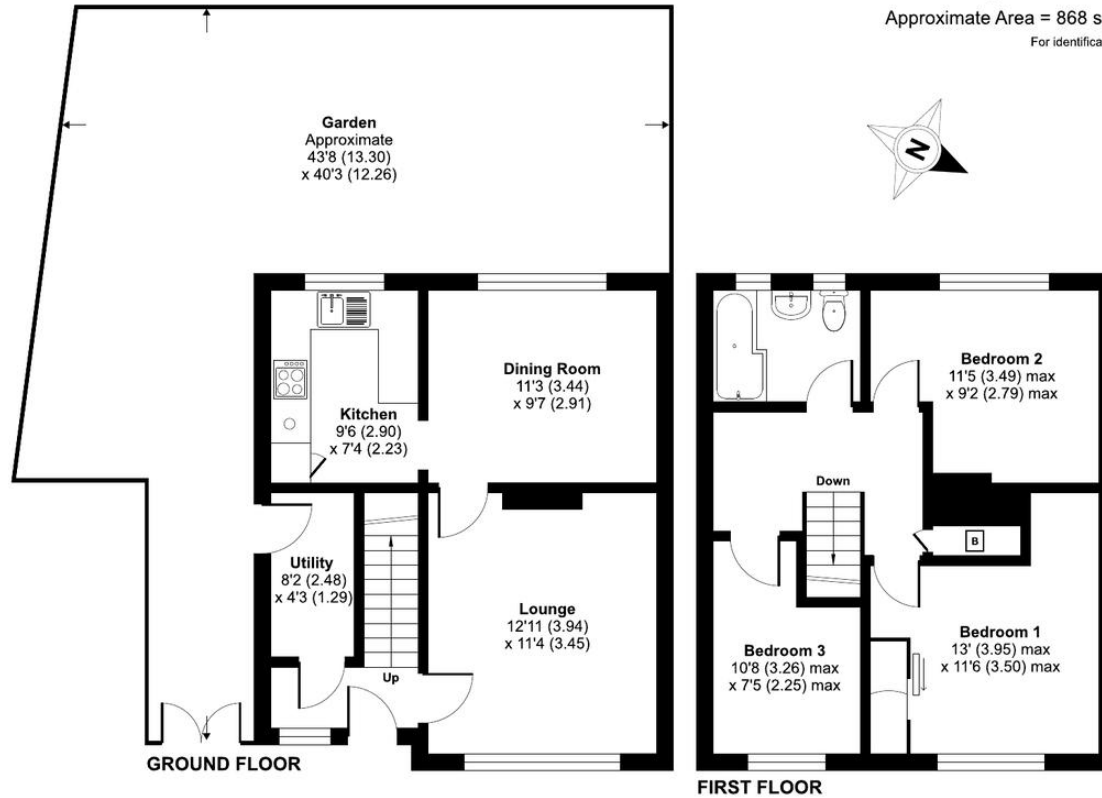


**Local Authority**  
**Council Tax Band**  
**EPC Rating**

Bexley London Borough Council  
D  
C

### Gattons Way, Sidcup, DA14

Approximate Area = 868 sq ft / 80.6 sq m  
For identification only - Not to scale



Floor plan produced in accordance with RICS Property Measurement Standards incorporating International Property Measurement Standards (IPMS2 Residential). © ritchecom 2024. Produced for Drewery. REF: 1189871

**Drewery Property Consultants**  
128 Station Road  
Sidcup  
Kent  
DA15 7AF

**Contact**  
020 8269 6605  
info@drewery.co.uk  
www.drewery.co.uk

**Agents Note:** Whilst every care has been taken to prepare these particulars, they are for guidance purposes only. All measurements are approximate and are for general guidance purposes only and whilst every care has been taken to ensure their accuracy, they should not be relied upon and potential buyers/tenants are advised to recheck the measurements.