



### Sidcup Hill Gardens

Sidcup  
DA14 6JP

**Leasehold**

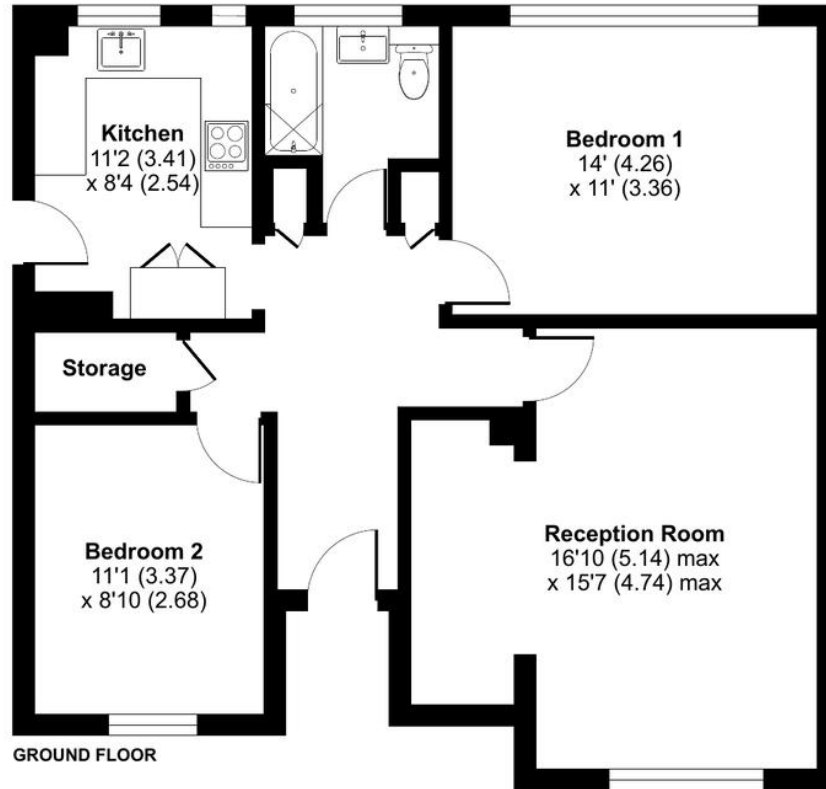
Two bedroom ground floor maisonette  
Long lease over 900 years  
Popular location  
Shared rear garden  
Communal green to the front  
Residents parking on the road  
Easy access to local shops, parks, schools and transport links

**Local Authority** Bexley London Borough  
Council  
**Council Tax Band** C  
**EPC Rating** C

**Lease** 990 years remaining  
**Service Charge** £768 per annum (including  
buildings insurance)  
**Ground Rent** £30 per annum

## Sidcup Hill, Sidcup, DA14

Approximate Area = 781 sq ft / 72.5 sq m  
For identification only - Not to scale



**Drewery Property Consultants**  
128 Station Road  
Sidcup  
Kent  
DA15 7AF

**Contact**  
020 8269 6605  
info@drewery.co.uk  
www.drewery.co.uk

**Agents Note:** Whilst every care has been taken to prepare these particulars, they are for guidance purposes only. All measurements are approximate and are for general guidance purposes only and whilst every care has been taken to ensure their accuracy, they should not be relied upon and potential buyers/tenants are advised to recheck the measurements.