



Maylands Drive

Sidcup
DA14 4BF

Leasehold

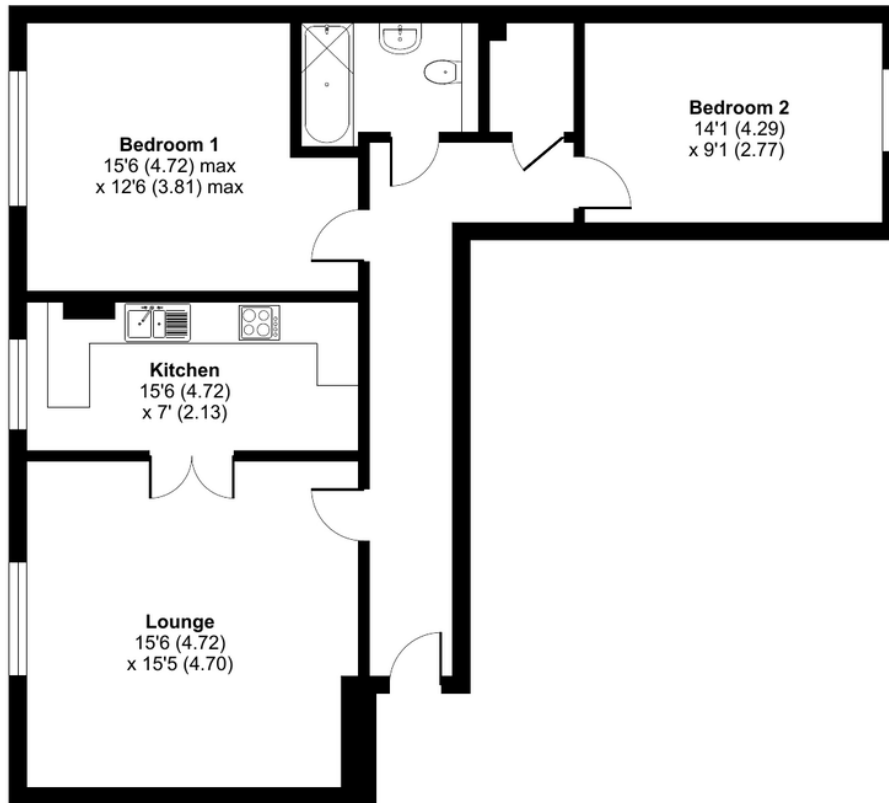
Two bedroom first floor apartment
Gated allocated parking space
Convenient for Albany Park station
Ideal first time purchase or investment opportunity

Local Authority Bexley London Borough
Council
Council Tax Band C
EPC Rating C

Lease 133 years remaining (150 years from Jan 2007)
Service Charge £2,350 per annum
Ground Rent £250 per annum

Maylands Drive, Sidcup, DA14

Approximate Area = 893 sq ft / 83 sq m
For identification only - Not to scale



GROUND FLOOR

Drewery Property Consultants
128 Station Road
Sidcup
Kent
DA15 7AF

Contact
020 8269 6605
info@drewery.co.uk
www.drewery.co.uk

Agents Note: Whilst every care has been taken to prepare these particulars, they are for guidance purposes only. All measurements are approximate and are for general guidance purposes only and whilst every care has been taken to ensure their accuracy, they should not be relied upon and potential buyers/tenants are advised to recheck the measurements.

