

ROBERTSON PHILLIPS
Estate Agents, Valuers,
Lettings and Property Management

262a Uxbridge Road, Hatch End,
Pinner, Middlesex HA5 4HS
Tel: 020 8421 4847

E-mail : lettings@robertsonphillips.co.uk

Hatch End : 020 8428 7161

Harrow : 020 8863 1122

Pinner : 020 8866 7151



**ROBERTSON
PHILLIPS**

Est. 1991



Wentworth Drive, Pinner

£2,300 P.C.M

Key Features include:

- Three Bedrooms
- Mid Terraced
- Gas Central Heating
- Double Glazing
- Stylish Interiors Throughout
- Conservatory
- Outdoor Lounge Area
- Off Street Parking
- Part Furnished

Property Overview:

This rarely available **THREE BEDROOM** extended mid terraced house is positioned a few feet away from Coteford Junior School, combining ultra contemporary interiors with colourful accents providing a fresh, urban vibe to any growing family. The property is within easy reach of Eastcote Village allowing easy access into Central London via its Metropolitan line station. **PART FURNISHED**

Accommodation:

Entrance Hall

Window to front, storage cupboard, ceramic tiled flooring and stairs.

Living Room 15' 7" x 10' 8" (4.75m x 3.25m)

Bay window to front, nets, wood laminate floor and fireplace surround.

Kitchen/Breakfast Room 16' 6" x 12' 0" (5.03m x 3.65m)

Modern fitted matching range of base and eye level units, stainless steel sink with mixer tap, integrated dishwasher, freestanding washing machine, fridge/freezer, range cooker with electric fan assisted oven, warming compartment, five ring gas hob with extractor hood over, window to rear, fireplace with electric fire, ceramic tiled flooring and double doors leading to: -

Conservatory 15' 9" x 11' 3" (4.80m x 3.43m)

Tiled floor, sofa and large book shelves.

Landing

Carpet, leading to:-

Principal Bedroom 16' 0" x 9' 8" (4.87m x 2.94m)

Bay window to front, curtains, nets, wood laminate floor, king size bedroom frame and fitted double wardrobe.

Bedroom 2 12' 4" x 9' 8" (3.76m x 2.94m)

Window to rear, nets, curtains, feature fireplace, original wooden flooring, retro wardrobe, bespoke double bed with fitted mattress.

Bedroom 3 10' 2" x 6' 6" (3.10m x 1.98m)

Window to front, blind and original wood flooring.

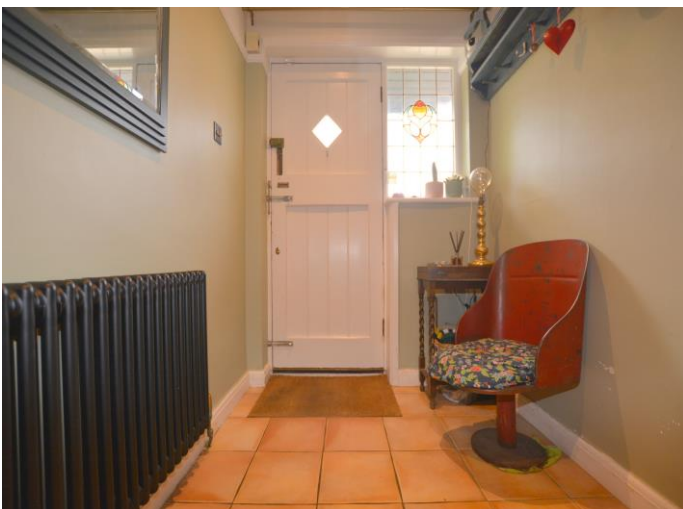
Bathroom

Window to rear, airing cupboard, tiled surround, stylish suite including bath with built in shower over, shower screen, wash hand basin, wall hung low level flush WC and heated towel rail.

Outside

Off street parking for two cars to front and rear garden with entertaining and relaxation area. **PLEASE NOTE:** The garden shed is not included.

Council Tax Band: D EPC Rating: TBC



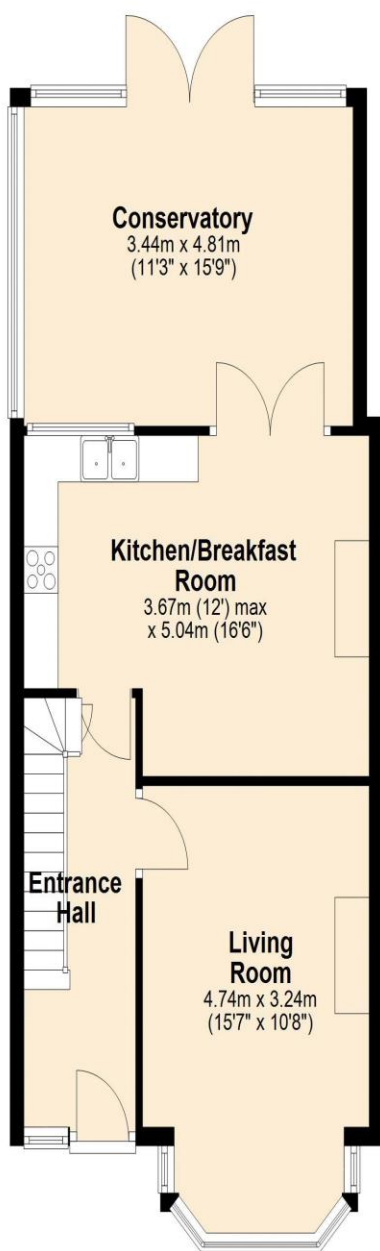


To arrange a viewing call:
020 8421 4847

Robertson Phillips
 262a Uxbridge Road, Hatch End, Pinner, HA5 4HS

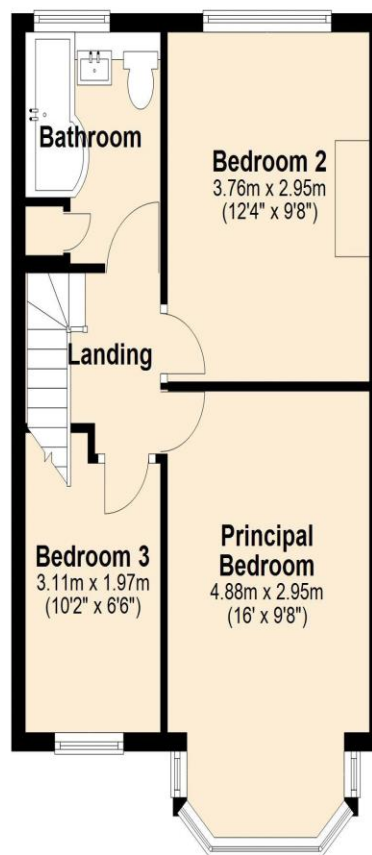
Ground Floor

Approx. 56.6 sq. metres (609.4 sq. feet)



First Floor

Approx. 39.3 sq. metres (422.7 sq. feet)



Total area: approx. 95.9 sq. metres (1032.1 sq. feet)



DISCLAIMER: Robertson Phillips may not have sought to verify the legal title of the property, the existence of planning permissions and/or building regulation approvals and have been unable to check the working condition of any services or appliances.

Property layouts are for general guidance and are not drawn exactly to scale. Measurements are taken at the widest points and bays, alcoves, wardrobes etc. may not be shown.