

**ROBERTSON PHILLIPS**  
Estate Agents, Valuers,  
Lettings and Property Management

262a Uxbridge Road, Hatch End,  
Pinner, Middlesex HA5 4HS  
Tel: 020 8428 7161

Email: [pinner@robertsonphillips.co.uk](mailto:pinner@robertsonphillips.co.uk)

Harrow: 020 8863 1122  
Lettings: 020 8421 4847

  
**ROBERTSON  
PHILLIPS**  
Estate Agents



554, Uxbridge Road, Pinner

Fixed £135,000



[www.robertsonphillips.co.uk](http://www.robertsonphillips.co.uk)





A bright well maintained first floor One Bedroom Retirement flat situated in the popular Dingles Court. Located within easy reach of Pinner Village which offers a selection of shops, cafe's, bus routes and Metropolitan Underground Station. Features of this development include security entry-phone system with CCTV, individual emergency alarm system in each flat, lift to all floors and scheme manager. This charming flat offers a lounge/dining room, fitted kitchen, bedroom and shower room. It has double glazing and gas central heating. Purchasers can buy at a rent free 70% share. No ground rent is payable. NO UPPER CHAIN.



#### Entrance Hall

Storage cupboard and airing cupboard with hot and cold water tanks.

Lounge/Dining Room 4.71m (15'6") x 3.23m (10'7")

Double glazed window to front with Juliet balcony. Cupboard housing central heating boiler.

Kitchen 3.78m (12'5") x 1.67m (5'6")

Fitted with a matching range of base and eye level units with inset 1+1/2 bowl sink with single drainer. Fridge/freezer, washing machine, gas cooker with extractor hood, part tiled walls and double glazed window to front.





Bedroom 3.78m (12'5") x 2.85m (9'4")

Double glazed window to front. Free standing wardrobe.

Shower Room

Corner shower enclosure with body jets, pedestal wash hand basin, part tiled walls and low-level WC.

Parking 0' 0" x 0' 0" (0m x 0m)

Ample resident parking.

Gardens

Beautiful well maintained gardens with woodland backdrop. Seating area, lawns, huge selection of mature trees and shrubs.

Service Charge

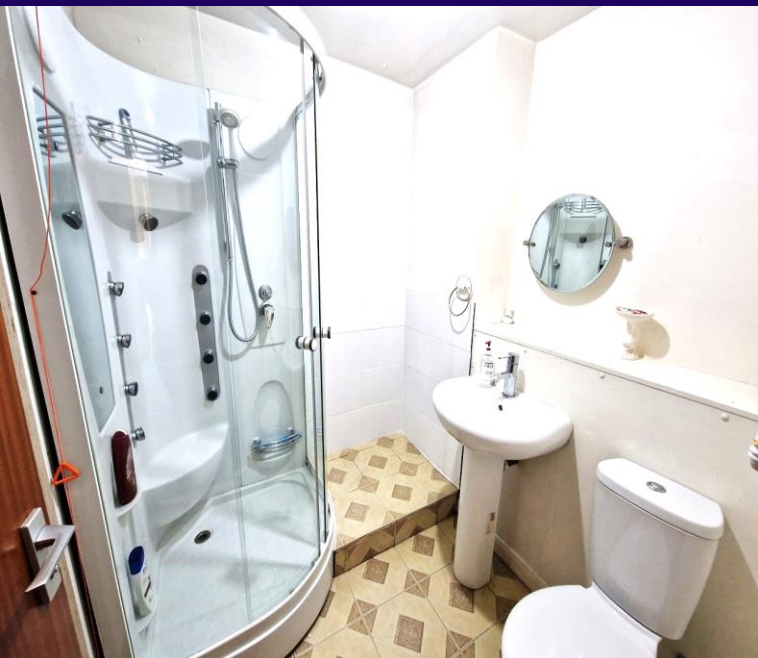
£3,081.76 p.a. 2025

Lease

New Lease on completion, reset to 100 years.

Council Tax Band B

EPC Rating C



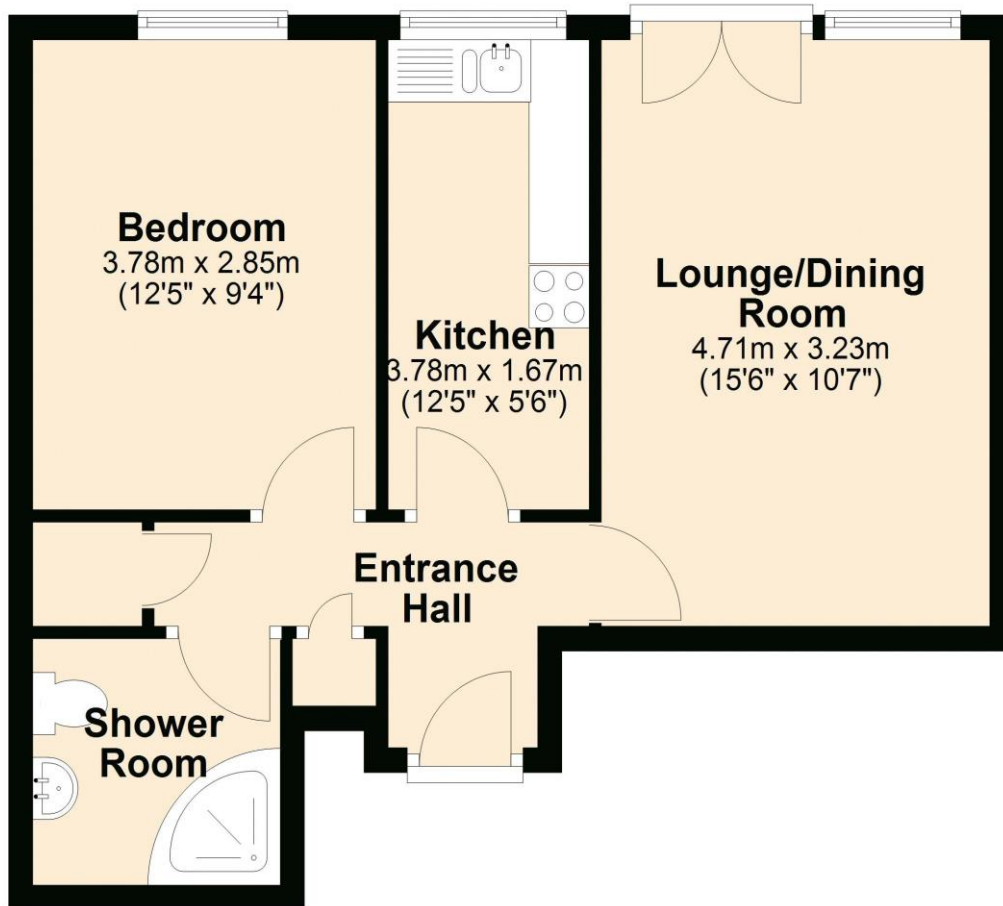


## KEY FEATURES:

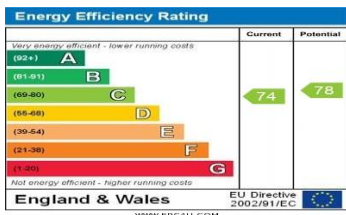
- Lounge/diner ● Double Glazing ● Fitted Kitchen ● Shower room/wc ● Gas heating ●
- Ample Parking
- Beautiful Gardens ●

## First Floor

Approx. 43.6 sq. metres (468.9 sq. feet)



Total area: approx. 43.6 sq. metres (468.9 sq. feet)



DISCLAIMER: Robertson Phillips may not have sought to verify the legal title of the property, the existence of planning permissions and/or building regulation approvals and have been unable to check the working condition of any services or appliances.

Property layouts are for general guidance and are not drawn exactly to scale. Measurements are taken at the widest points and bays, alcoves, wardrobes etc. may not be shown.