

**ROBERTSON PHILLIPS**  
Estate Agents, Valuers,  
Lettings and Property Management

262a Uxbridge Road, Hatch End,  
Pinner, Middlesex HA5 4HS  
Tel: 020 8421 4847

E-mail : [lettings@robertsonphillips.co.uk](mailto:lettings@robertsonphillips.co.uk)

Hatch End : 020 8428 7161

Harrow : 020 8863 1122

Pinner : 020 8866 7151



**ROBERTSON  
PHILLIPS**

Est. 1991



**Headstone Road, Harrow**

**£1,150 P.C.M**

**Key Features include:**

- Studio Apartment
- Second Floor
- Double Glazing
- Economy 7 Electric Heating
- Communal Gardens
- Allocated Parking Space
- Unfurnished

# Property Overview:

This rarely available, well presented and extremely spacious **STUDIO** second floor apartment is situated in the heart of Harrow, moments from Harrow on the Hill station with its array of shopping facilities. **UNFURNISHED**

## Accommodation:

### Entrance Hall

Laminate flooring, airing cupboard housing hot water cylinder and door to:-

### Living Room/Bedroom Area 16' 2" x 14' 3" (4.92m x 4.34m)

Window to front, laminate flooring, two large storage cupboard and door to:-

### Kitchen/Breakfast Room 9' 6" x 7' 2" (2.89m x 2.18m)

Modern fitted matching range of base and eye level units with worktop space over, stainless steel sink with mixer tap, fridge, combined washer/dryer, electric fan assisted oven, four ring electric ceramic hob, skylight and ceramic tiled flooring.

### Bathroom

Modern fitted three piece suite with deep panelled bath, hand shower attachment over, glass screen, pedestal wash hand basin, low-level flush WC, wall mounted mirror, shaver point, skylight and vinyl flooring.

### Outside

Attractive communal garden and allocated parking space for one car.

**Council Tax Band: B    EPC Rating: C**





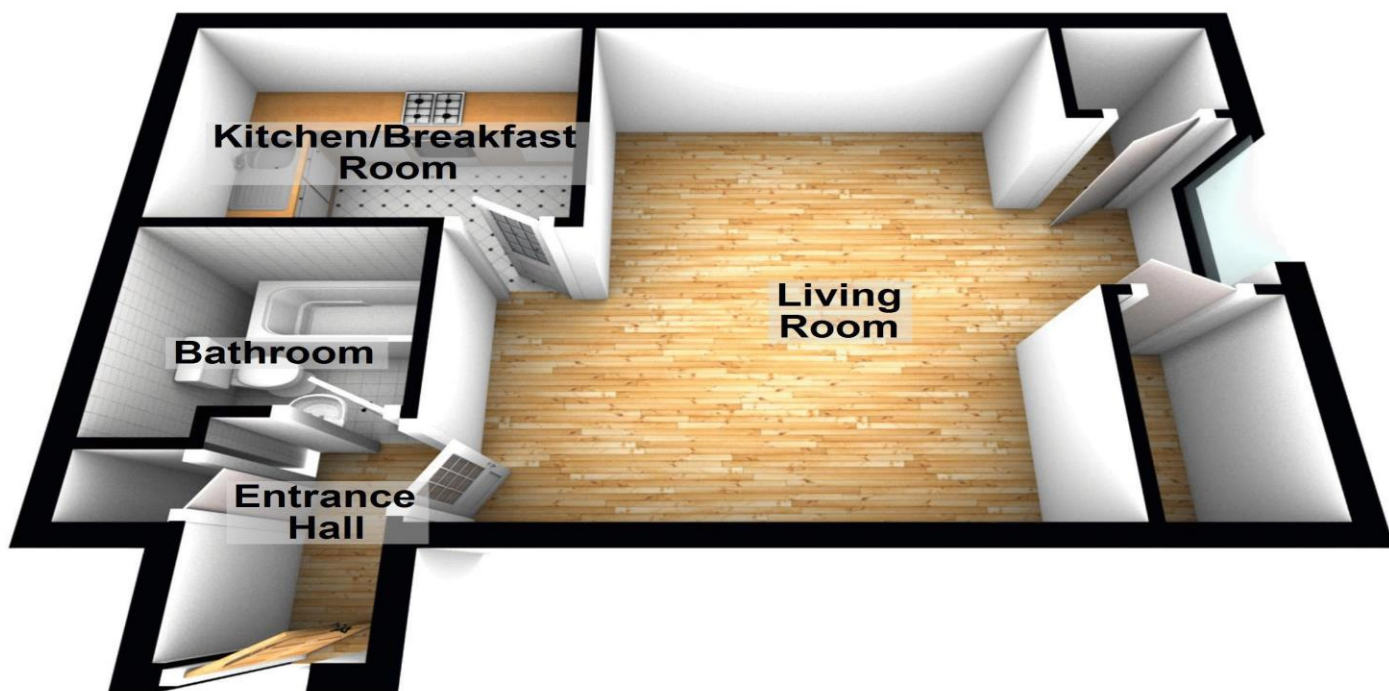
To arrange a viewing call:  
**020 8421 4847**

Robertson Phillips  
262a Uxbridge Road, Hatch End, Pinner, HA5 4HS

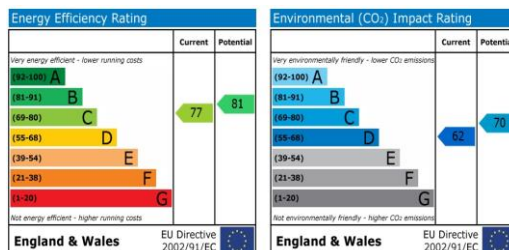


## Second Floor

Approx. 414.5 sq. feet



Total area: approx. 414.5 sq. feet



**DISCLAIMER:** Robertson Phillips may not have sought to verify the legal title of the property, the existence of planning permissions and/or building regulation approvals and have been unable to check the working condition of any services or appliances.

**Property layouts are for general guidance and are not drawn exactly to scale. Measurements are taken at the widest points and bays, alcoves, wardrobes etc. may not be shown.**