

# *SAVOY COURT, NORTH HARROW*



*Two Bedroom Apartment*

*Offers In Excess Of £340,000*

# Description

Robertson Phillips are delighted to present this large and well presented two bedroom fourth floor apartment to the market. With amazing views overlooking Harrow On The Hill, the spacious property is situated on the 4th floor, is accessible via lift and has a rarely available underground parking space available too. The flat covers over 700sq feet has two sizable double bedrooms, an open planned kitchen/diner/lounge, three piece bathroom and has 111 years remaining on the lease. The property comprises of; Entrance hall open plan to kitchen/breakfast and lounge area, master bedroom with range of fitted wardrobes, double second bedroom and bathroom suite with built in shower above bath. Further Benefits include; Gas Central Heating, Double Glazing, video Entryphone, lift and secure parking space.

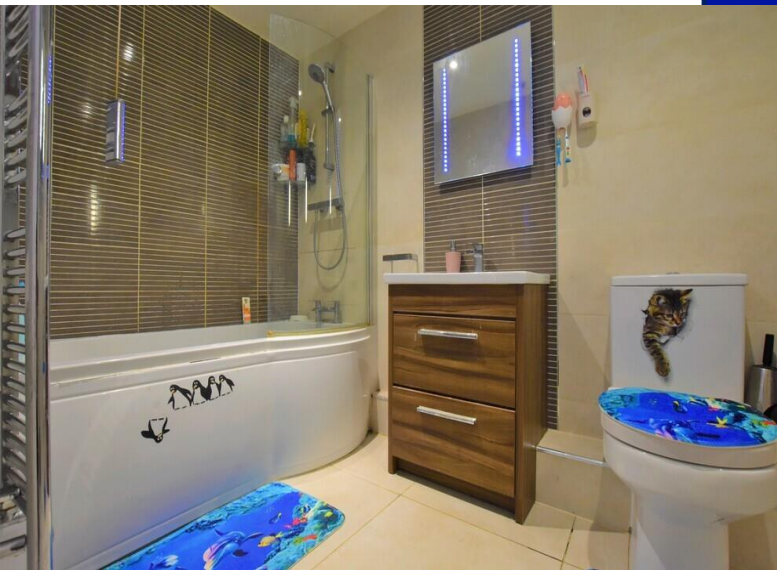


**Location:** The building is situated in North Harrow high street, is 0.1 mile from the local tube station which gives access to the Metropolitan Line. There is also an array of eateries, coffee shops, a gym within it, and food shopping facilities in the vicinity of the property.



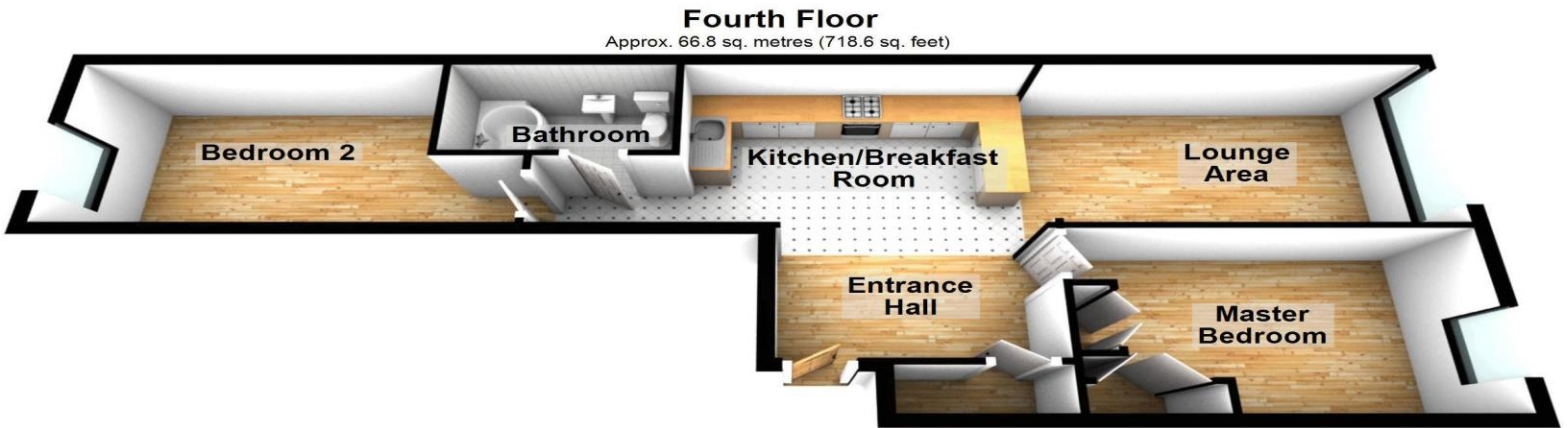


- *Two Double Bedrooms*
- *Gas Central Heating*
- *Video Entryphone System*
- *Stylish Interiors*
- *Fourth Floor*
- *Double Glazing*
- *Lift*
- *Secure Parking Space*

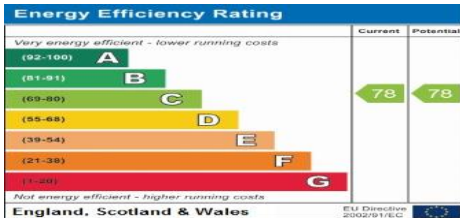


### Additional Information

TENURE: LEASEHOLD  
LOCAL AUTHORITY: LONDON BOROUGH OF HARROW  
ENERGY EFFICIENCY RATING: C



Total area: approx. 66.8 sq. metres (718.6 sq. feet)



We have not sought to verify the legal title of the property, the existence of planning permissions and/or building regulation approvals and have been unable to check the working condition of any services or appliances.

Property layouts are for general guidance and are not drawn exactly to scale. Measurements are taken at the widest points and bays, alcoves, wardrobes etc. may not be shown.