



iwestates.com

17, Edwards Court, Stearn Way, Buntingford, SG9 9GJ

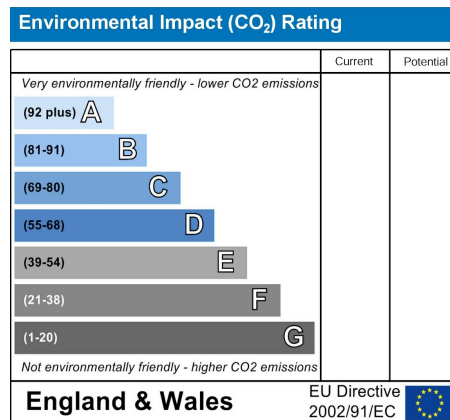
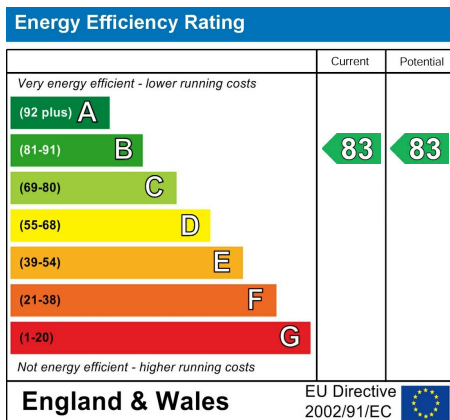


# 17, Edwards Court, Stearn Way, Buntingford, SG9 9GJ

## 25% Shared Ownership or Full Value £215,000 - Edwards Court, Buntingford

A superb opportunity to purchase a spacious 1 bedroom apartment in the market town of Buntingford. Available on a shared ownership basis or full value, this property provides purchasers with a more affordable method of getting on to the housing ladder. Buntingford offers a variety of shops, cafes and restaurants and is also well positioned on the A10 for the commuter, with London Kings Cross being just 35 minutes from Royston train station.

- Spacious first floor apartment
- Large bedroom
- Juliette balcony
- Gas central heating
- Well presented throughout
- Modern stylish kitchen
- Residents parking
- Available to purchase either as 25% shared ownership or full value of £215,000



Approximate Gross Internal Area  
47.82 sq m / 514.73 sq ft

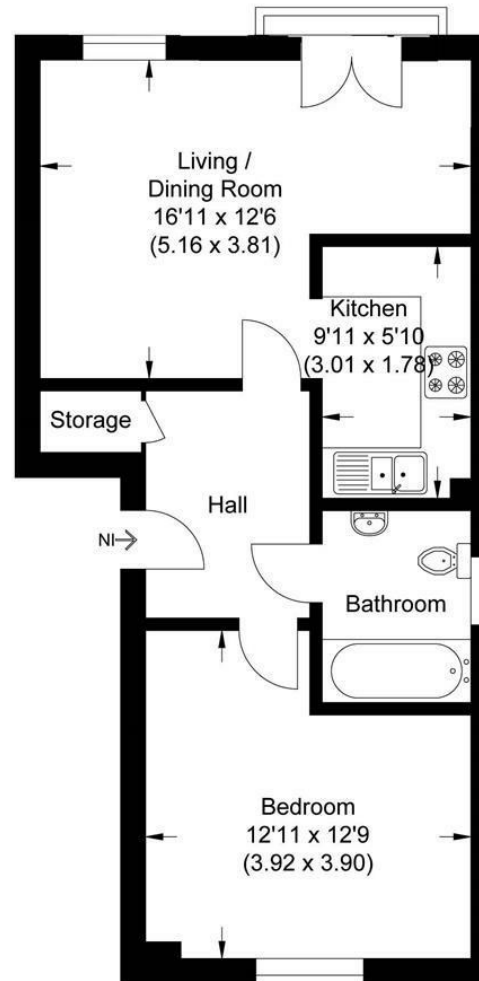


Illustration for identification purposes only, measurements are approximate, not to scale.

**Communal Entrance Hall**

Entry phone system

**Entrance Hall**

Large entrance hall. Radiator. Storage cupboard. Doors to:

**Living / Dining Area**

Radiator. Window to rear. Juliette balcony.

**Kitchen**

Fully fitted kitchen comprising of a modern range of wall and base level units. Stainless steel sink and drainer with mixer tap over. Built in oven and 4-ring gas hob, stainless steel splash back, extractor hood over. Space for fridge/freezer and washing machine. Houses boiler.

**Bathroom**

Large bathroom with obscure window to the side aspect. Panel bath with glazed shower screen and shower over. Pedestal wash hand basin. Low level flush w/c. Mirrored medicine cabinet. Chrome ladder style towel rail. Tiled floor.

**Bedroom**

Window to front aspect. Radiator.

**Outside**

Lockable bike storage. Communal bin storage.

**Parking**

Ample undesignated residents parking to front.

**Agents Note**

Housing Association is Hightown. Interested parties for shared ownership are requested to complete an affordability assessment prior to viewing.

Additional shares can be purchased.

25% share - Rent £533.37 p.m. - Service charge £73.73 p.m. - Insurance £10.70 p.m. - Management fee £23.33 p.m. - Maintenance fee £17.50 p.m.













