



**HUNTERS**<sup>®</sup>  
HERE TO GET *you* THERE

5 Lunardi Court, Puckeridge, SG11 1UT

## 5 Lunardi Court, Puckeridge, SG11 1UT

Asking Price £470,000

Three bedroom detached property situated close to the centre of this popular Village and it's amenities. The property has undergone much modernisation and benefits from new cloakroom, bathroom and kitchen. The property is decorated in a contemporary style throughout. This is a desirable family home and a must to view.

- Bright modern sitting room with feature contemporary fire and inset TV.
- Refitted downstairs cloakroom.
- Contemporary styled refitted bathroom.
- Well stocked front garden.
- Single garage with power and light.
- Good sized kitchen dining room recently refitted.
- Two double bedrooms and good sized single.
- Large secure rear sun terrace opening onto traditional garden.
- Drive with space for two vehicles.
- Property is a must to view.

Hunters Buntingford 34 High Street, Buntingford, SG9 9AQ | 01763 272391  
buntingford@hunters.com | www.hunters.com



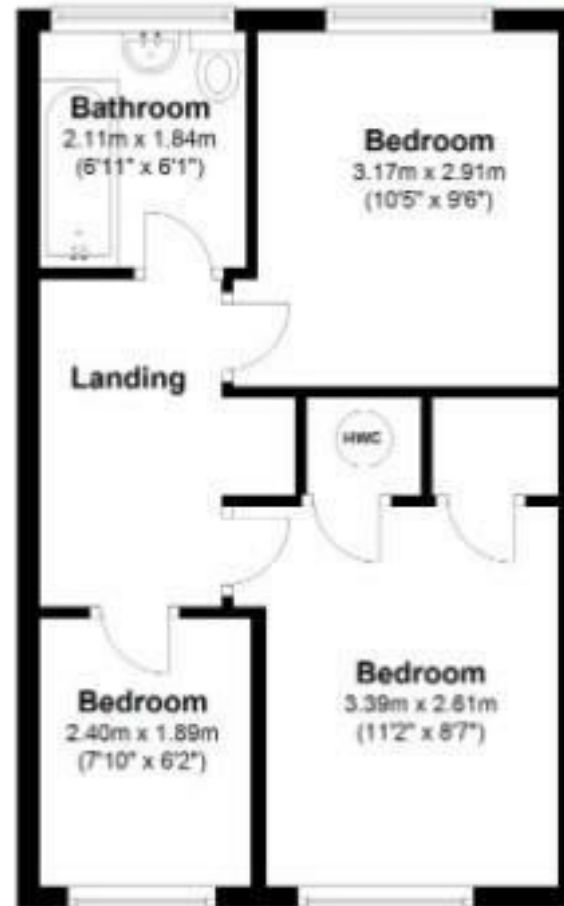
## Ground Floor

Approx. 39.3 sq. metres (423.2 sq. feet)



## First Floor

Approx. 35.3 sq. metres (379.6 sq. feet)



## Ground Floor

### Entrance

Half glazed front door.

### Entrance Hall

New grey oak effect laminate flooring. Coving. Door to cloakroom. Radiator.

### Cloakroom

uPVC window to front. New suite comprising low level WC and Vanity unit with inset ceramic wash hand basin. Metro style tiled splash backs. Grey oak effect laminate flooring

### Sitting Room

14'6" x 15'2"

uPVC window to front. Radiator. Feature inset contemporary fireplace. Stairs to first floor.

### Kitchen Dining Room

10'2" x 15'2"

uPVC window to rear. Patio doors to rear. Range of gloss finish eye and base level units. Inset ceramic sink. Built in dishwasher. Inset four ring ceramic hob with oven below and extractor over. Oak effect laminate flooring. Inset ceiling lights. Door to side. Built in cupboards under stairs, providing separate areas for storage, washing machine and tumble dryer.

## First Floor

### Landing

Doors to all first floor rooms. loft access.

### Bedroom One

11'1" x 8'6"

uPVC window to front. Radiator. Airing cupboard. Built in wardrobe. Coving.

### Bedroom Two

10'4" x 9'6"

uPVC window to rear. Radiator. Coving. Laminate flooring.

## Bedroom Three

7'10" x 6'2"

uPVC window to front. Radiator.

## Bathroom

uPVC window to rear. New white suite comprising panel bath, low level WC with centre flush, vanity unit with inset ceramic wash hand basin. Chrome ladder style heated towel rail. Inset ceiling lights. Extensive metro style tiling. Oak effect laminate flooring.

## Outside

### Single Garage

Up and over door, power and light. Privacy door. Drive leading to with space for two cars.

### Front Garden

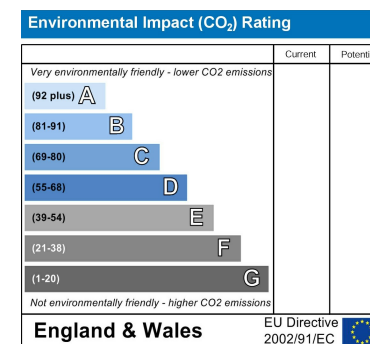
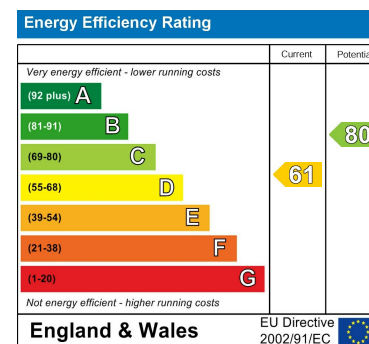
Well stocked. Path to front door.

### Rear Garden

Large terrace. Picket fence and gate separating area laid to lawn with mature trees. Outside tap.

## Agents Note

Boiler located in the garage



These particulars are intended to give a fair and reliable description of the property but no responsibility for any inaccuracy or error can be accepted and do not constitute an offer or contract. We have not tested any services or appliances (including central heating if fitted) referred to in these particulars and the purchasers are advised to satisfy themselves as to the working order and condition. If a property is unoccupied at any time there may be reconnection charges for any switched off/disconnected or drained services or appliances - All measurements are approximate. If you are thinking of selling your home or just curious to discover the value of your property, Hunters would be pleased to provide free, no obligation sales and marketing advice. Even if your home is outside the area covered by our local offices we can arrange a Market Appraisal through our national network of Hunters estate agents.









