



HUNTERS[®]

HERE TO GET *you* THERE

93 Parker Drive, Buntingford, Herts,
SG99GL

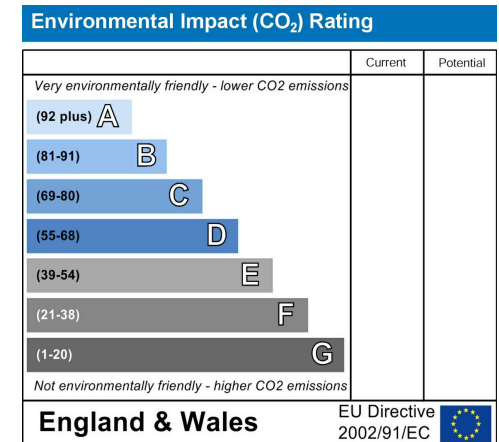
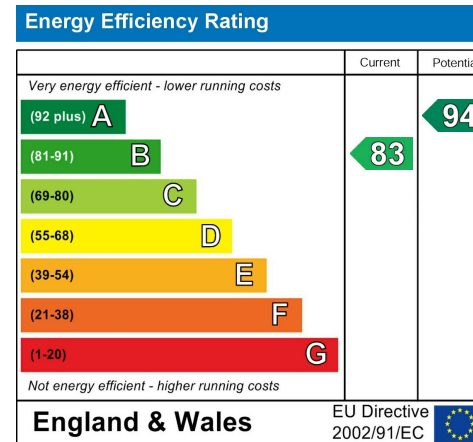
93 Parker Drive, Buntingford, Herts, SG99GL

Price £475,000

Delightful end terrace house, boasts a spacious interior with a large dual aspect sitting room, large kitchen diner, three bedrooms, and two bathrooms, two parking spaces plus a garage. making it an ideal family home. One of the highlights of this lovely home is the master bedroom, complete with an en-suite bathroom and a dressing area, offering a touch of luxury. The dual facing windows in most rooms flood the house with natural light, creating a warm and inviting atmosphere throughout.

- Fairview's 'The Heather' three bedroom family home.
- Parking for two vehicles plus garage
- Master bedroom with dressing area and en-suite
- Jack and Jill family bathroom

- Over 1100 square feet!
- Well maintained throughout
- Further two double bedrooms
- South facing rear garden with electric awning

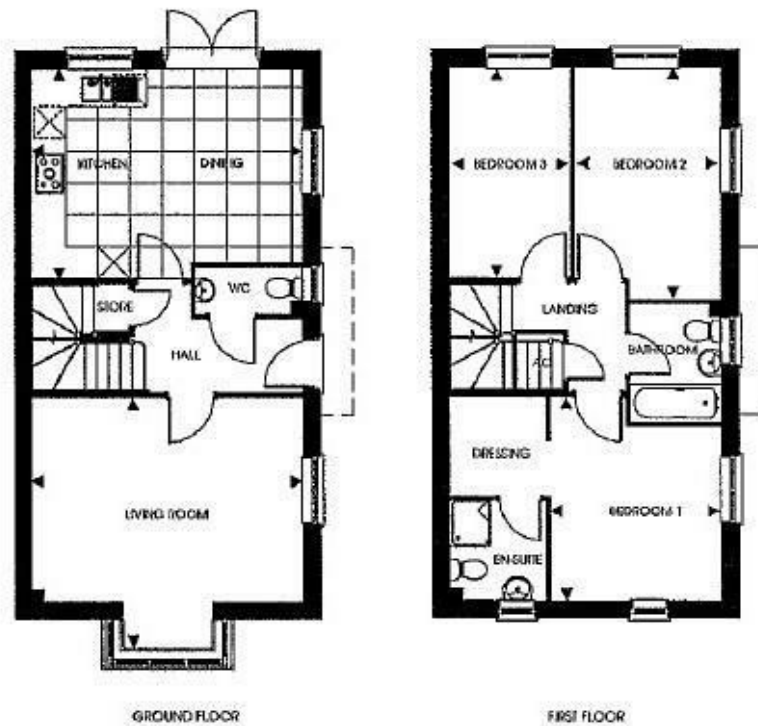


Hunters Buntingford 34 High Street, Buntingford, SG9 9AQ | 01763 272391
 buntingford@hunters.com | www.hunters.com

The Heather

3 bedroom family home with en-suite and separate kitchen/dining

Plot:130



Ground Floor

Kitchen/Dining	5.07m x 3.95m	16'8" x 13'0"
Living	5.07m x 4.70m	16'8" x 15'5"

First Floor

Bedroom 1	3.80m x 3.19m	12'6" x 10'6"
Bedroom 2	4.37m x 2.74m	14'4" x 9'0"
Bedroom 3	3.95m x 2.25m	13'0" x 7'5"

Total Area: 102.2sqm / 1,100sq ft

GROUND FLOOR

ENTRANCE

Storm canopy with carriage lamp to side, half glazed door to entrance hall.

ENTRANCE HALL

Doors to cloakroom, kitchen dining room, living room and under stairs cupboard. Wood effect floor. Radiator.

CLOAKROOM

Obscure window to front aspect. Low level WC with centre flush and pedestal wash hand basin. Radiator.

SITTING ROOM

16'7" x 15'5"

Stunning dual aspect sitting room with box bay window to the side aspect. Shutters to both windows. Wood effect flooring. Radiator.

KITCHEN / DINER

16'7" x 12'11"

Dual aspect room with windows to side and rear plus patio doors leading to rear garden. Shutters to side window. Range of eye, base and full height modern units, granite work tops, tiled splashbacks and integrated appliances including 5-ring gas hob. Houses boiler. Radiator.

FIRST FLOOR

LANDING

Good size landing with doors to all first floor bedrooms, Jack and Jill family bathroom and airing cupboard. Access to loft.

MASTER BEDROOM

12'5" x 10'5"

Dual aspect with windows to front and side aspect both with shutters. Radiator. Through to:

DRESSING AREA

Fitted with mirror front wardrobes. Door to:

EN SUITE SHOWER

Obscure window to side. Shower cubicle with power shower. Low level WC with centre flush. Pedestal wash hand basin. Fully tiled. Radiator.

FAMILY BATHROOM

Jack and Jill bathroom with doors leading to landing and bedroom two, Panel bath with hand held shower over. Pedestal wash hand basin. Low level flush WC. Chrome ladder style radiator. Obscure window to front aspect. Fully tiled.

BEDROOM TWO

14'4" x 8'11"

Dual facing with shutters to both windows. Radiator.

BEDROOM THREE

12'11" x 7'4"

Window with shutters to garden aspect. Radiator.

OUTSIDE

FRONT

Path to front door. Laid to lawn. Gated access to garden.

REAR GARDEN

South facing rear garden. Mostly laid to lawn with two patio areas. Electric awning. Timber shed. Outside tap. Access to garage.

GARAGE

Up and over garage door. Eaves storage. Light and power. Privacy door leading to garden.

PARKING

Allocated parking directly outside the property plus in front of the garage,







