



HUNTERS[®]

HERE TO GET *you* THERE

63 Cranville Way, Buntingford, SG9 9UR

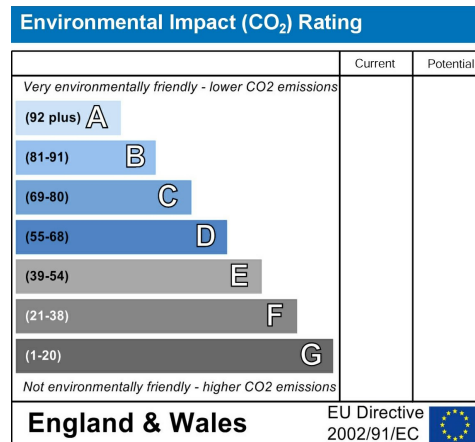
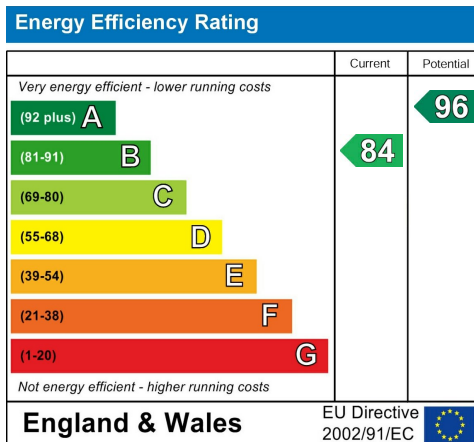
63 Cranville Way, Buntingford, SG9 9UR

Price £400,000

Nearly new two bedroom semi-detached home in the new Dandara estate, Buntingford. The current owners have creatively elevated this home with their talent of interior designs and well thought out storage carpentry. Benefitting from two large bedrooms, both with en-suites, ground floor cloakroom, driveway for 3 vehicles, gated driveway plus detached garage, media wall, integrated kitchen and clever storage solutions, this home must be viewed to appreciate in full.

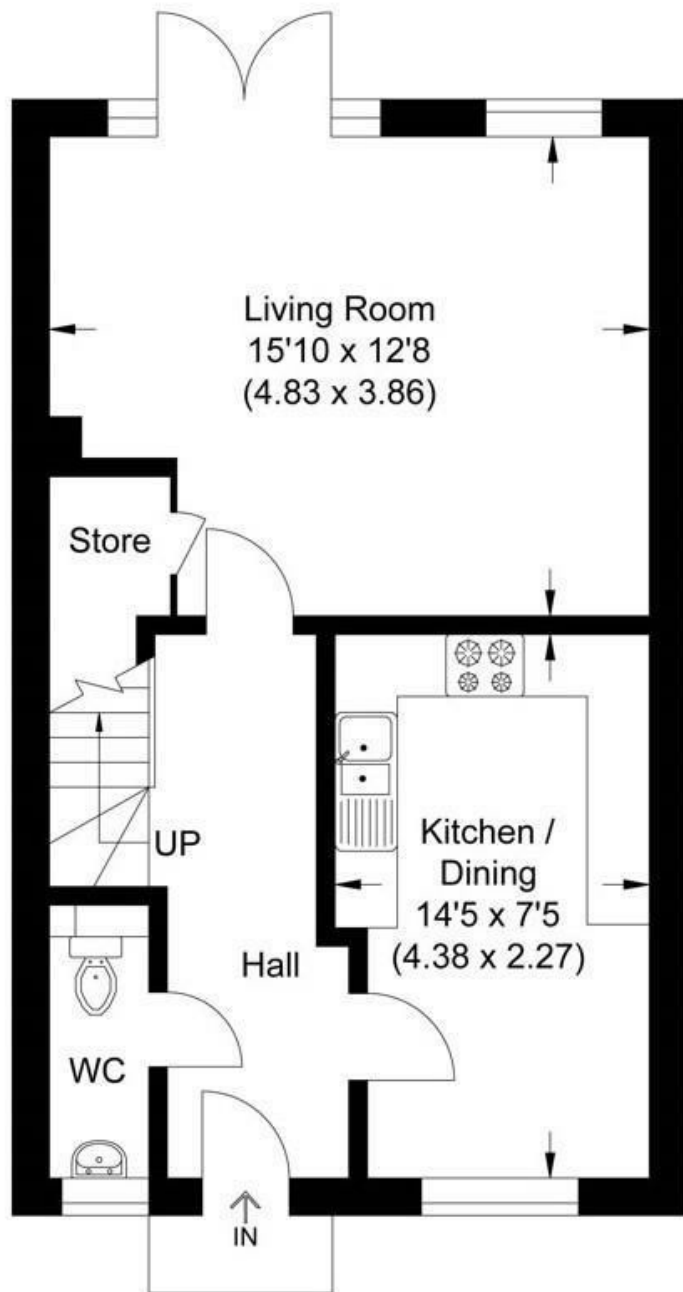
- Nearly new two double bedroom home
- Well appointed integrated high quality kitchen
- Detached garage with double gated driveway
- Clever storage solutions
- Karndean flooring to kitchen and entrance hall

- Beautiful interior design
- En-suite to both bedrooms
- E.V. point
- Downstairs cloakroom
- Media wall with inset electric feature fire

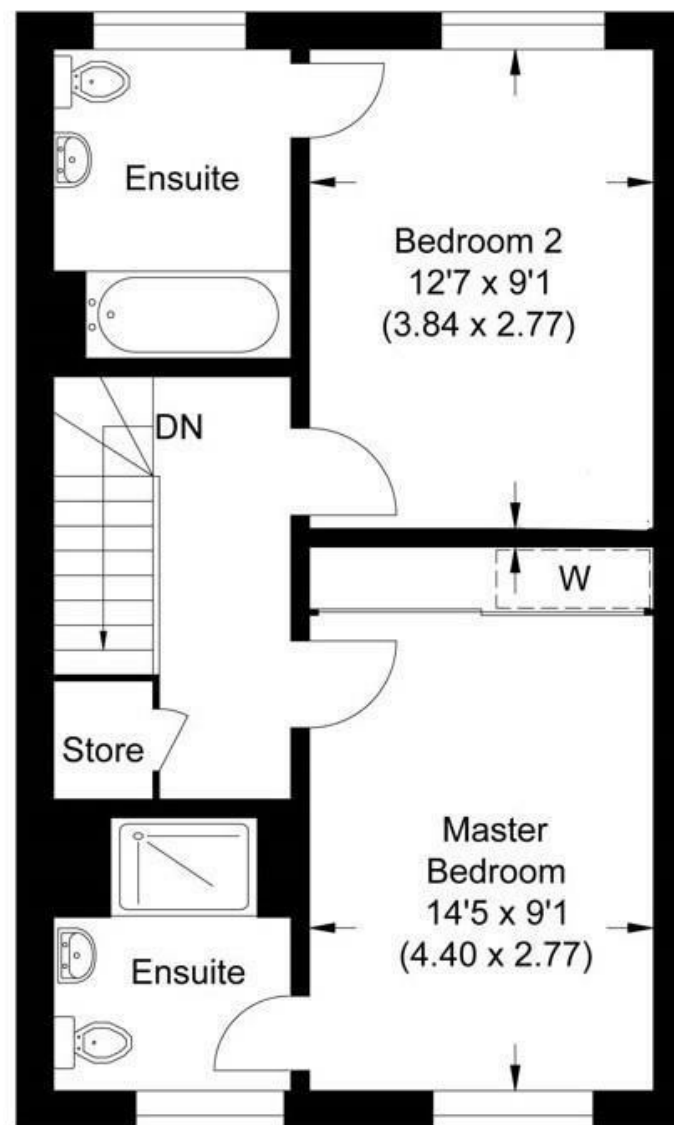


Hunters Buntingford 34 High Street, Buntingford, SG9 9AQ | 01763 272391
buntingford@hunters.com | www.hunters.com

Approximate Gross Internal Area
81.05 sq m / 872.41 sq ft



Ground Floor



First Floor

Illustration for identification purposes only, measurements are approximate, not to scale.

ENTRANCE

Storm canopy. Security lamps.

ENTRANCE HALL

Timber and glazed front door. Turning stairs to first floor. Radiator. Slide out understairs storage units.

CLOAKROOM

Decorative wall panelling. Low level flush W/C. Wash hand basin. Radiator. Obscure window to front aspect. Inset ceiling lights.

KITCHEN / DINER

14'4" x 7'5"

Modern range of eye and base level units with composite granite countertops and splashbacks. Integrated double oven, microwave, 4 ring induction hob with extractor hood over, integrated dishwasher and washer / dryer. Inset stainless steel sink. Houses combi gas boiler. Inset ceiling lights. Window with shutters to front aspect.

SITTING ROOM

15'10" x 12'7"

Bespoke cupboards and shelving. Media wall with electric feature fire. Window to rear aspect. French doors leading to garden. Radiator. Large storage cupboard fitted with cupboards. Houses consumer unit.

FIRST FLOOR**LANDING**

Shelved airing cupboard. Access to boarded loft with ladder.

BEDROOM ONE

14'5" x 9'1"

Fitted with wall to wall wardrobes. Radiator., Window to front aspect.

EN-SUITE TO BEDROOM ONE

Double length shower. Low level flush W/C. Pedestal wash hand basin.

Chrome ladder style radiator. Inset ceiling lights. Extractor fan. Obscure window to front aspect.

BEDROOM TWO

12'7" x 9'1"

Window to rear aspect. Radiator.

EN-SUITE TO BEDROOM TWO

Fitted with panelled bath. Low level flush W/C. Pedestal wash hand basin. Chrome ladder style radiator. Obscure window to rear aspect. Inset ceiling lights. Extractor fan.

OUTSIDE**FRONT**

Small garden with mostly shrubs. Path leading to front door.

DRIVEWAY

Tandem double driveway. E.V. charging point. Double gates leading to rear. Security lamps.

GARDEN

22ft approximately

Landscaped mostly with patio and shrubs. Further driveway leading to garage. Access to side of property through double gates. Garden tap. Security lights. Power sockets.

GARAGE

Electric garage door. Fully insulated and plaster boarded. Work bench. Power. Lighting. Electric heater. Privacy door to garden.

AGENTS NOTE

Dandara (developers) advised acoustic barrier will be installed behind the evergreens situated behind rear garden fence.







