



Odd Down, Bath

£575,000

**Contemporary Mews Style Three Bedroom Detached House. EPC Grade C**





3 Crescent Place Mews  
Bath  
BA2 2PY

**PRICE: £575,000**

A light and airy, privately built Mews style detached house (one of three) in a quiet private Cul-de-Sac off Bloomfield Road on the South side of Bath. The accommodation is arranged over two floors with the living space on the first floor. Hall, main bedroom with en-suite shower, two further double bedrooms and a family bathroom. Upstairs there is an open plan kitchen/dining room with integrated appliances and side doors onto a patio (potential to extend the living space). Double doors open onto the dual aspect living room with French doors to the small rear gravelled garden. At the front there is a private drive to the parking area for at least two cars with access to the garage. Offered for sale with no chain and ideally located for the University and excellent local schools, a well priced detached family home.

**Circa 2003**

**Detached House**

**Three Bedrooms**

**Two Reception Rooms**

**Fitted Kitchen**

**Gas Central Heating**

**UPVC Double Glazing**

**Freehold**

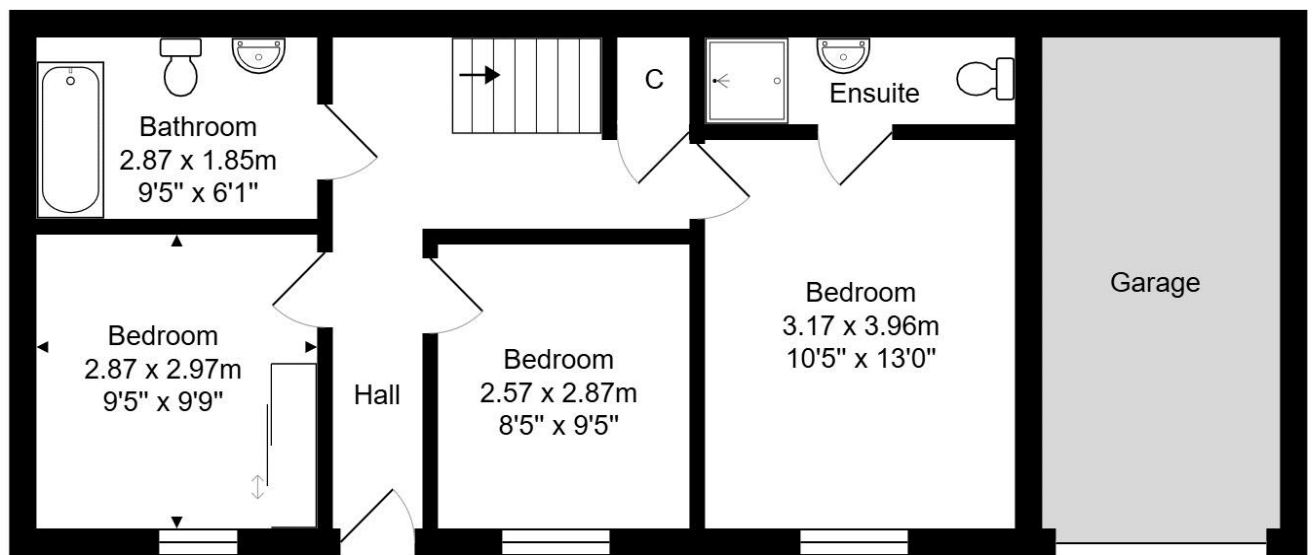
**Parking & Garage**

**Council Tax Band A £1437**

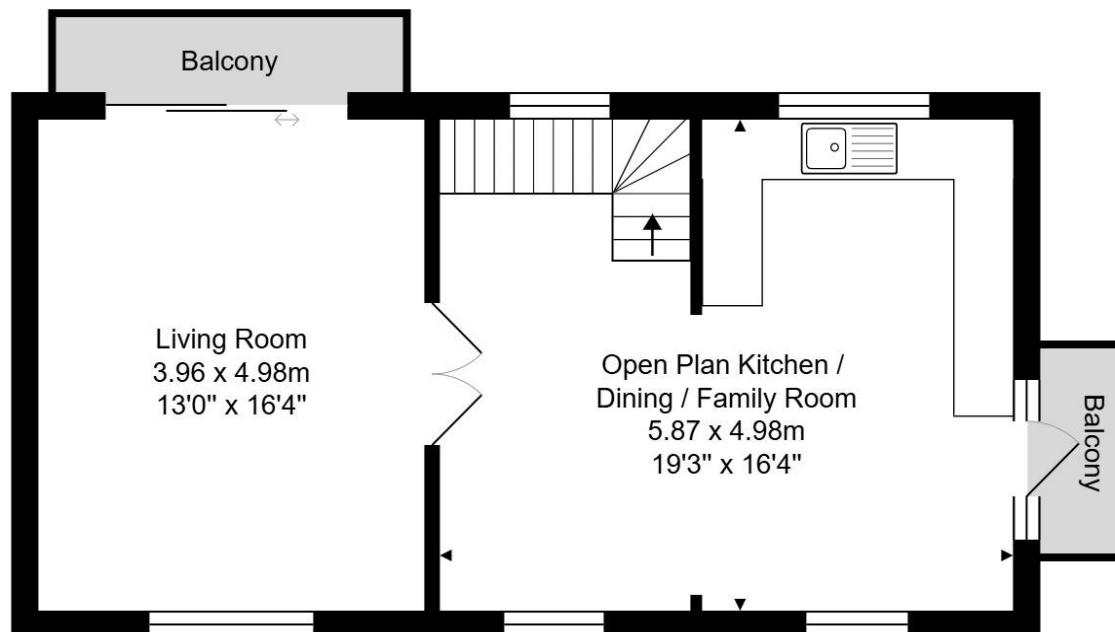
**Patio Garden Side & Rear**

**Vacant Possession**





Ground Floor



First Floor

Whilst every attempt has been made to ensure the accuracy of the floorplan contained here, measurements of doors, windows, rooms and any other items are approximate and no responsibility is taken for any error, omission or mis-statement.

This plan is purely for illustrative purposes only and should be used as such by any prospective purchaser.

Area includes internal and external wall thickness

[www.epcassessments.co.uk](http://www.epcassessments.co.uk)

**Kit Johnson Residential**  
**26-33 High St**  
**Weston**  
**Bath**  
**BA1 4BX**  
**01225 444447**  
**[sales@kitjohnson.co.uk](mailto:sales@kitjohnson.co.uk)**  
**[www.kitjohnson.co.uk](http://www.kitjohnson.co.uk)**