



Four Bedroom Semi Detached House in Popular Location. Attractive Gardens. EPC Grade D



8 Cranwells Park Bath BA1 2YD

PRICE: £795,000

A balanced and well proportioned semi-detached house, located in one of the most sought after roads on the West side of Bath. The house has parking to the front and stands in landscaped gardens with raised borders and lawns. The accommodation includes a central hall, fitted kitchen, dining room, large sitting room, utility, shower/cloakroom and internal access to the garage. Upstairs there are four good bedrooms, family shower room and an additional WC. Attractive and substantial gardens to the rear. Cranwells Park is an elevated Cul-de-Sac just North West of Royal Victoria Park and as such is a mainly level walk into the City Centre. Nearby amenities in Weston, Chelsea Road and St

James's Square. It is rare that such quality homes become available in this popular location. Highly Recommended.

Four Bedrooms

Semi Detached House

Popular Location

Driveway & Garage

Attractive Gardens

Gas Central Heating

Close to City Centre

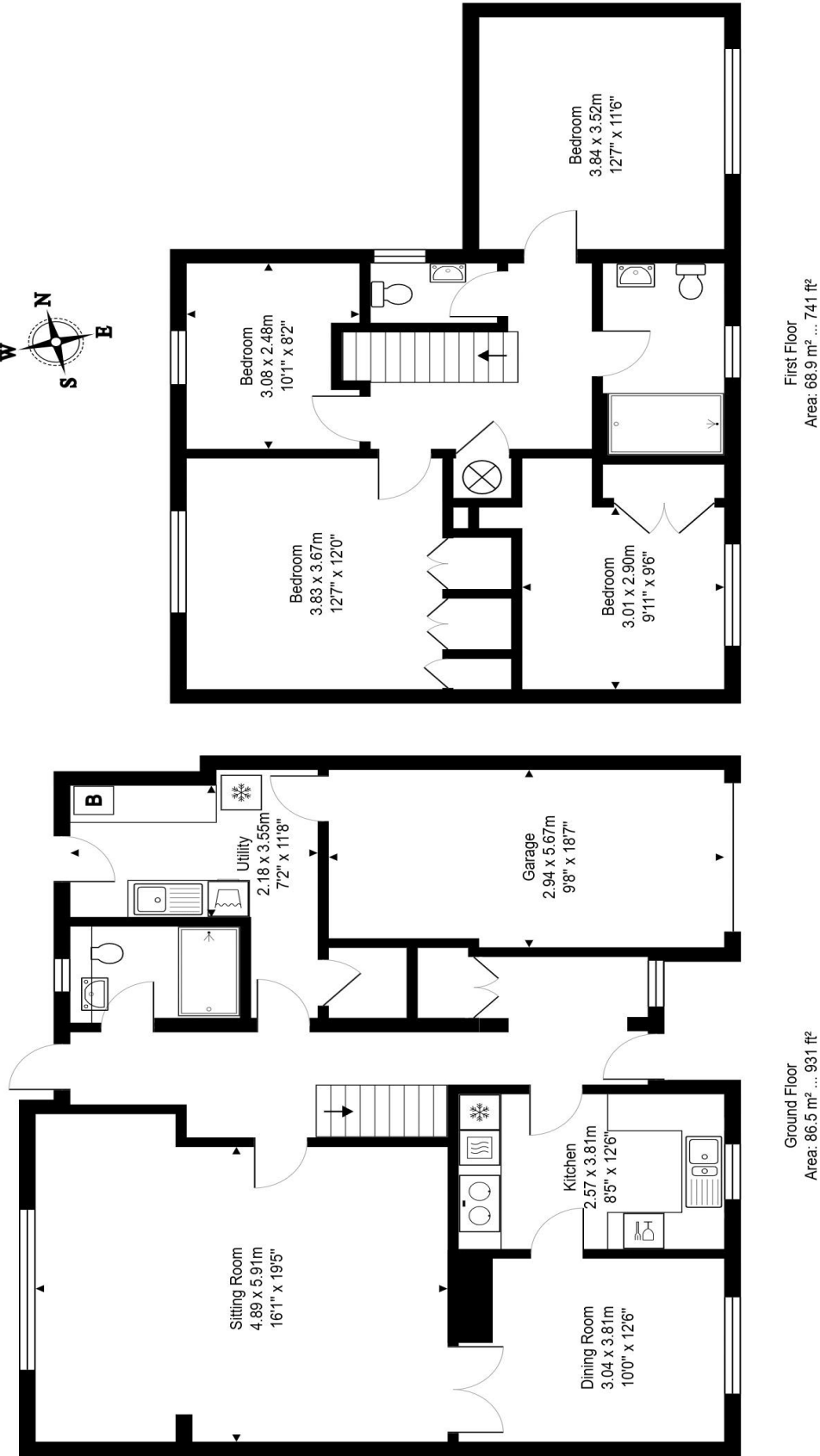
1672 Sq Ft (155.3 Sq Mt)

Council Tax Band E £2634

Freehold



8 Cranwells Park



Total Area: 155.3 m² ... 1672 ft² (excluding garage)

All measurements of walls, doors, windows, fittings and appliances, their size and locations are approximate and cannot be regarded as being an accurate representation neither by the vendor nor their agent.
www.inovusproperty.co.uk

Kit Johnson Residential
sales@kitjohnson.co.uk
01225 444447