



Weston, Bath

£750,000

Well Appointed, Extended 1950's Semi Detached House. Three/ Four Bedrooms. EPC Grade C



27 Lucklands Road

Bath

BA1 4AX

PRICE: £750,000

A beautifully appointed, extended 1950's semi detached house in a sought after road off Weston Park, ideal for access into the village as well as a walk into the City Centre. Porch, hall, living room, open plan kitchen/diner/family room with modern integrated appliances, engineered oak flooring and bi fold doors onto the delightful West facing gardens, utility room, downstairs shower room and office/bedroom 4. Upstairs there are three good bedrooms and a bathroom suite. Parking for two cars at the front. The house has been sympathetically modernised and extended and as such makes for an ideal family home to move in to in such a popular area.

1950's Extended Semi

**Stunning Open Plan
Kitchen/Diner**

Three Bedrooms

Living Room

Utility

Office/ Bedroom Four

Shower Room

Bathroom

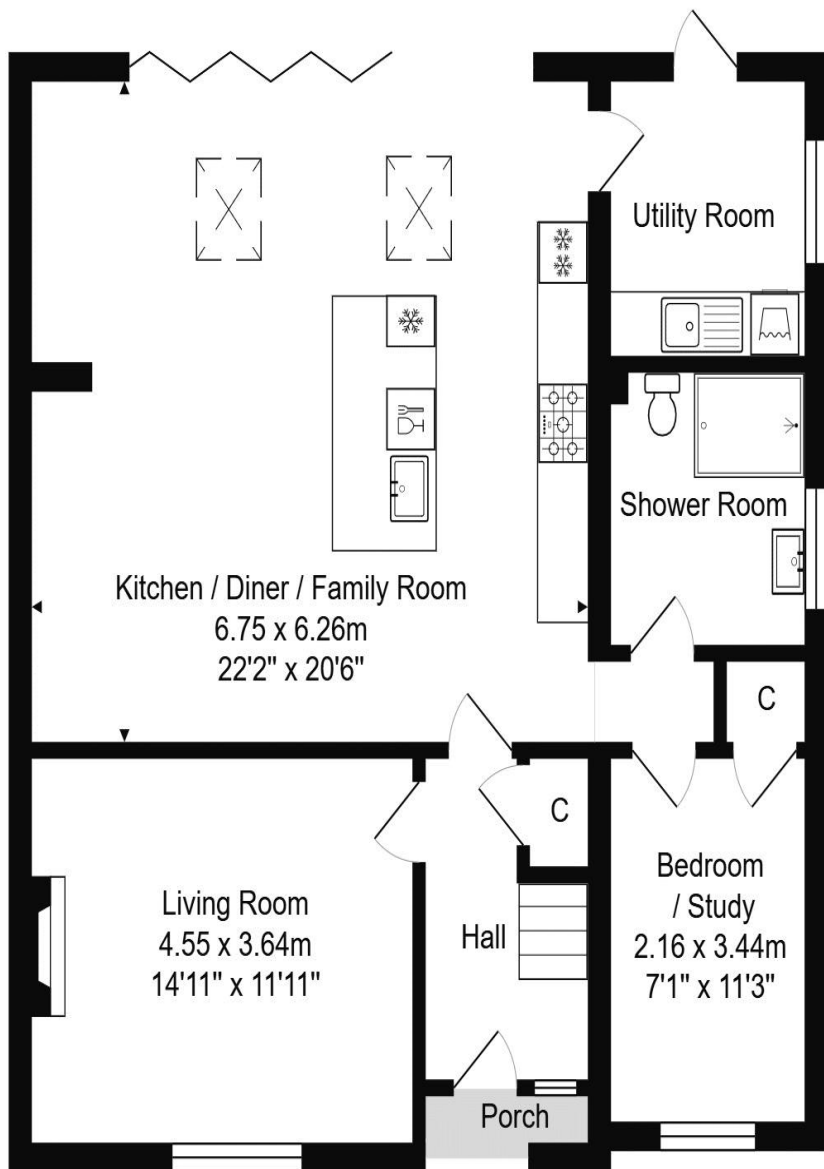
Gas Central Heating

Freehold

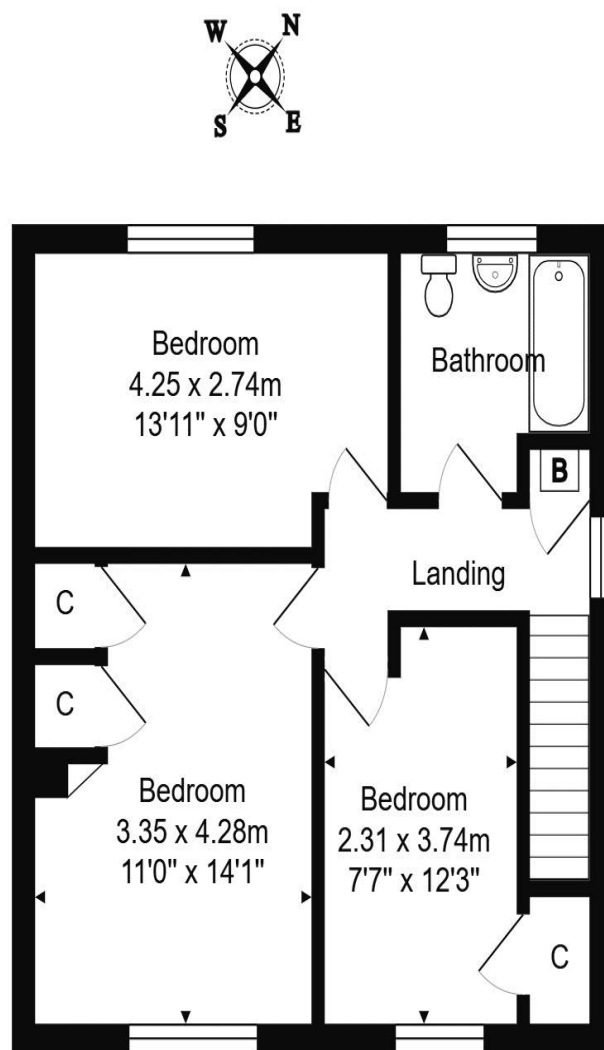
1517 Sq Ft (141 Sq Mt)

Council Tax Band D £2155





Ground Floor
Area: 92.1 m² ... 991 ft²



First Floor
Area: 48.9 m² ... 526 ft²

Total Area: 141.0 m² ... 1517 ft² (excluding porch)

Whilst every attempt has been made to ensure the accuracy of the floorplan contained here, measurements of doors, windows, rooms and any other items are approximate and no responsibility is taken for any error, omission or mis-statement.

This plan is purely for illustrative purposes only and should be used as such by any prospective purchaser.

Area includes internal and external wall thickness

www.epcassessments.co.uk

Kit Johnson Residential
26-33 High St
Weston
Bath
BA1 4BX
01225 444447
sales@kitjohnson.co.uk
www.kitjohnson.co.uk