



Weston, Bath

£450,000

Weston, Bath



6 Brookfield Park
Bath
BA1 4JF

PRICE: £450,000

A stunning and beautifully presented 1930's mid terrace house in a popular location off the bottom of Lansdown Lane and close to Weston All Saints Primary School. Improved in recent years, this makes for a wonderful family home. Hall, sitting room with log burner, open plan kitchen/dining room with integrated appliances, utility area and downstairs cloakroom. Upstairs there are three good bedrooms and a large bathroom suite. French doors from the rear lead onto a deck and West facing garden with rear lane access. At the front of the house there is parking for two cars. It is rare that homes of such quality come to market in this price bracket. Brookfield Park is ideally located for local schools, Bath's Royal United Hospital and the M4 via Lansdown.

1930's Mid Terrace

Three Bedrooms

Sitting Room

Open Plan Kitchen/Dining Room

Utility and Cloakroom

Four Piece Bathroom

Attractive Sunny Established Rear Garden

Parking for 2 Cars

Gas Central Heating

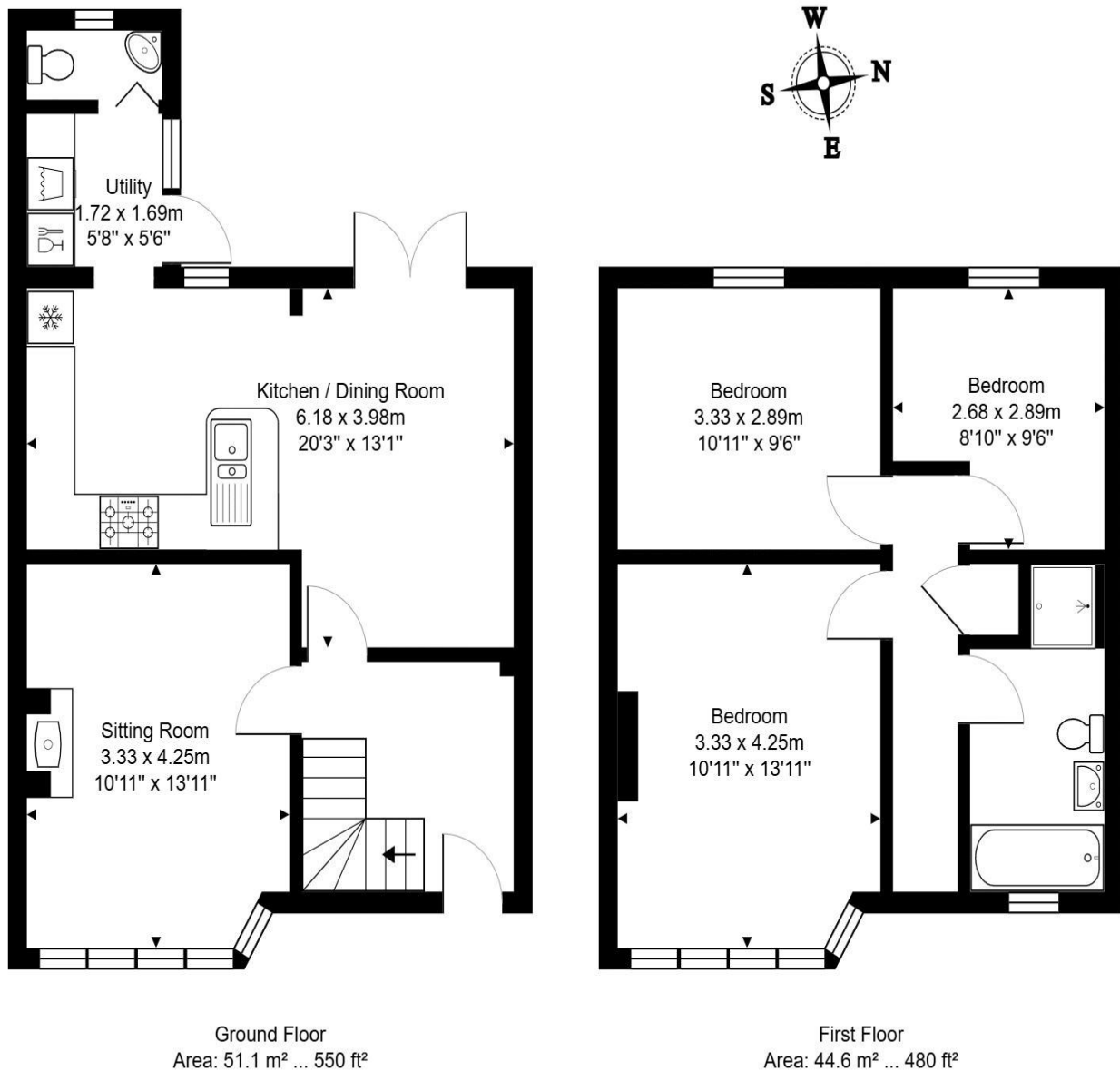
Freehold

Council Tax Band C £1916

1030 Sq Ft (95.7 Sq Mt)



6 Brookfield Park



Total Area: 95.7 m² ... 1030 ft²

All measurements of walls, doors, windows, fittings and appliances, their size and locations are approximate and cannot be regarded as being an accurate representation neither by the vendor nor their agent.
www.inovusproperty.co.uk

Kit Johnson Residential
26-33 High St
Weston
Bath
BA1 4BX
01225 444447
sales@kitjohnson.co.uk
www.kitjohnson.co.uk