



Larkhall, Bath

£410,000

Well Appointed, Contemporary, Light & Spacious Three Bedroom House. EPC Grade E



29 Hill View Road

Bath

BA1 6NX

PRICE: £410,000

With stunning views across to Bathampton Down and beyond, and with three double bedrooms, a beautifully refurbished end terrace 1960's house. Light and airy accommodation throughout, hall, cloakroom, sitting room, open plan kitchen/dining room with integrated appliances. Upstairs there are three good sized bedrooms and a bathroom suite. The heating and electric have all been upgraded (2023). This particular house has a very generous plot with scope to extend (subject to consents). The gardens are to the front, side and rear. Ideally located for the amenities in Larkhall Village and excellent local schools. Vacant possession. A good size family home.



1960's End Terrace

Three Good Bedrooms

**Stunning Open Plan
Kitchen/Diner**

Sitting Room

Cloakroom & Bathroom

Large Plot to 3 Sides

Beautiful Open Views

Freehold

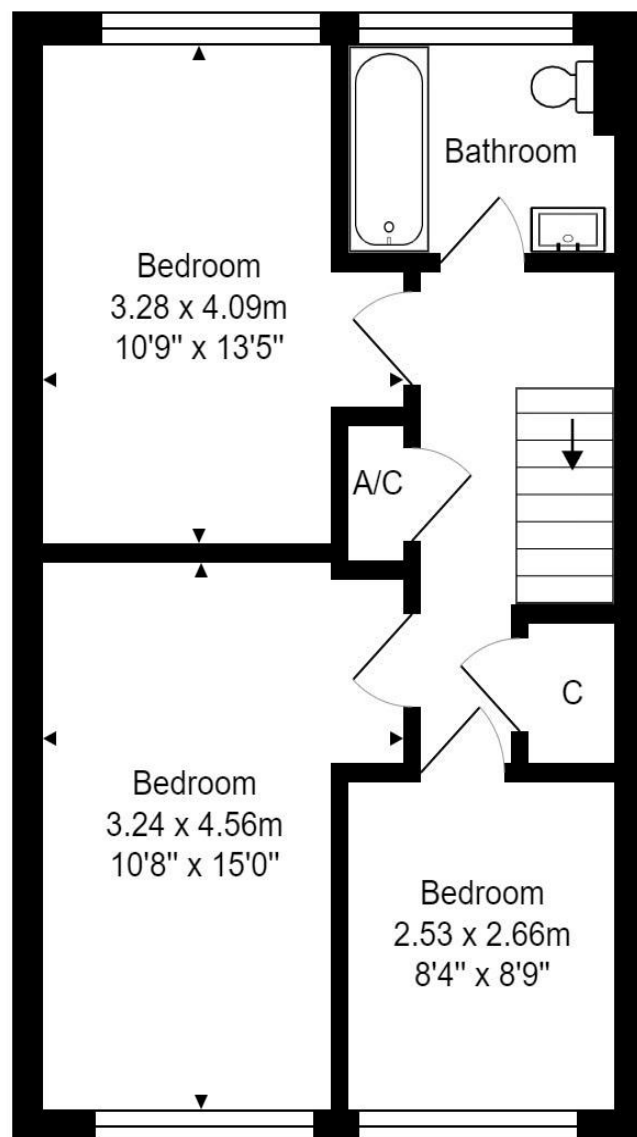
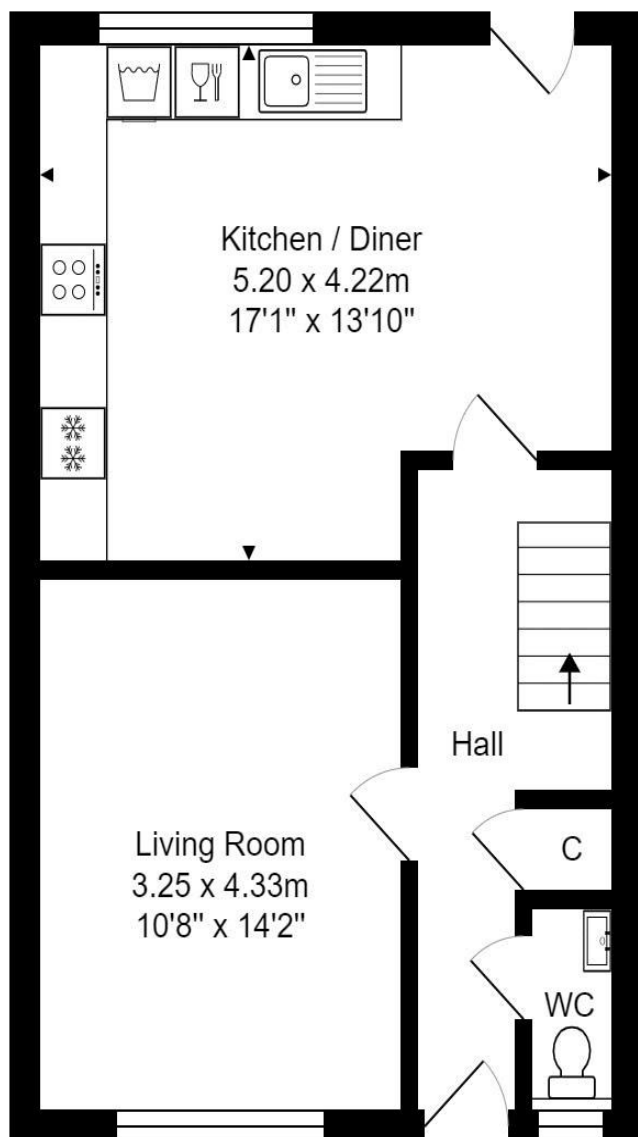
Electric Heating

Refurbished 2023

976 Sq Ft (90.7 Sq Mt)

Close to Local Amenities





Ground Floor
Area: 45.3 m² ... 488 ft²

First Floor
Area: 45.3 m² ... 488 ft²

Total Area: 90.7 m² ... 976 ft²

Whilst every attempt has been made to ensure the accuracy of the floorplan contained here, measurements of doors, windows, rooms and any other items are approximate and no responsibility is taken for any error, omission or mis-statement.

This plan is purely for illustrative purposes only and should be used as such by any prospective purchaser.

Area includes internal and external wall thickness

www.epcassessments.co.uk

Kit Johnson Residential
26-33 High St
Weston
Bath
BA1 4BX
01225 444447
sales@kitjohnson.co.uk
www.kitjohnson.co.uk