

KIT JOHNSON

residential



Wick, Bristol

£375,000

A Solid 1960's Three Bedroom Semi on a Large Corner Plot. EPC Grade D



2 Naishcombe Hill

Wick

Bristol

BS30 5QW

PRICE: £375,000

On the market for the first time in 60 years and offering huge potential to extend/update (stc), an early 1960's semi detached on a large corner plot in a favoured location in Wick. Hall, sitting room, dining room, kitchen, lean-to. Three upstairs bedrooms and a bathroom. The solid house has been well maintained through the years but is now in need of updating. Extensive gardens to the front and side with an enclosed garden to the rear, access to the garage and driveway at the bottom of the garden. Wick is convenient for both Bath and Bristol as well as the M4, and has a popular local Primary School, pub and local amenities. The house is priced to sell and offered with vacant possession. Highly recommended.

1960's Semi

Three Bedrooms

Two Reception Rooms

Kitchen

Bathroom

Large Corner Plot

Scope to Extend (STC)

Gas Central Heating

Council Tax Band C £2053

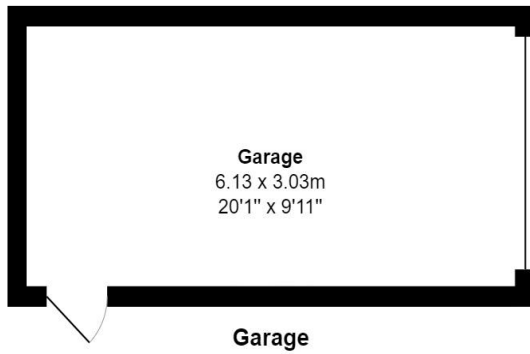
**888 Sq Ft (82.5 Sq Mt) exc
Garage & Porch**

Garage & Driveway

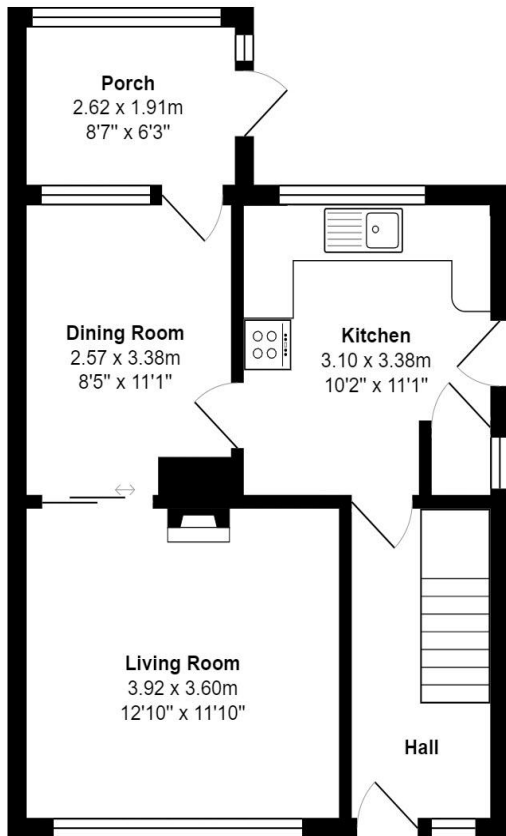
Established Attractive Gardens

Freehold

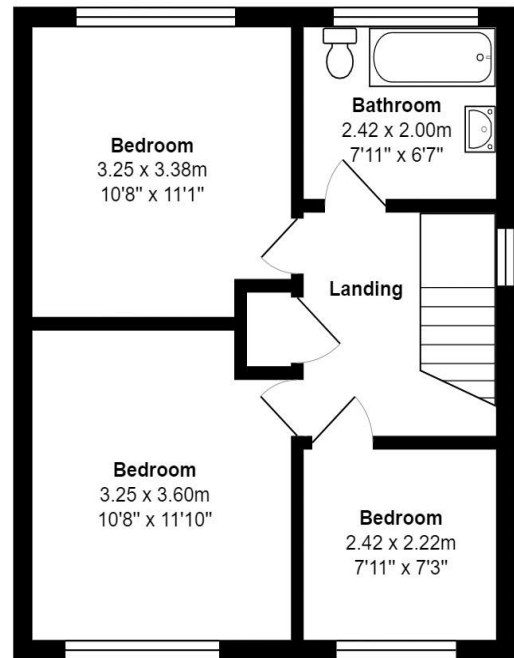




2 Naishcombe Hill
Wick
Bristol
BS30 5QW



Ground Floor



1st Floor

Total Area: 82.5 m² ... 888 ft² (excluding porch, garage)

IMPORTANT NOTICE: This floor plan is intended to support potential buyers/tenants to better visualise a property's internal layout. It should be used in conjunction with marketing images to create a sense of the inside spaces. All measurements, while within acceptable tolerances, are approximate and for display purposes only. Not drawn to scale.

Kit Johnson Residential
26-33 High St
Weston
Bath
BA1 4BX
01225 444447
sales@kitjohnson.co.uk
www.kitjohnson.co.uk