

KIT JOHNSON

residential



Sheppards Gardens,
Bath

£150,000

One Bedroom Retirement Apartment in Sought After Development.



28 Shepprds Gardens
High Street
Bath
BA1 4DF

PRICE: £150,000

Situated on the first floor, (access via stairs or lift) of this complex of retirement apartments and at the side looking over the gardens. Sheppards Gardens was completed in 1986 and caters for residents over the age of 55. The apartment comprises of living room, modern fitted kitchen, shower room and double bedroom. There are excellent communal facilities to include unallocated parking, well maintained gardens, laundry room, en-suite guest room for visiting relatives, lift and residents lounge. The development is warden assisted and there is an alarm system with 24 hour assistance. Sheppards Gardens lies in the heart of Weston Village with it's level array of shops with a chemist, bakers, library, small supermarket, Thai shop, Post Office, cafes and more. There is a bus

stop outside which takes you into the City of Bath. Offered with vacant possession.

Retirement Apartment

**Living Room 13'7 x 10'9 Ft
(4.2m x 3.25m)**

**Fitted Kitchen 9'2 x 6'3 Ft
(2.8m x 1.9m)**

**Double Bedroom 10'11 x 8'5
Ft (3.3m x 2.5m)**

Shower Room

Double Glazing

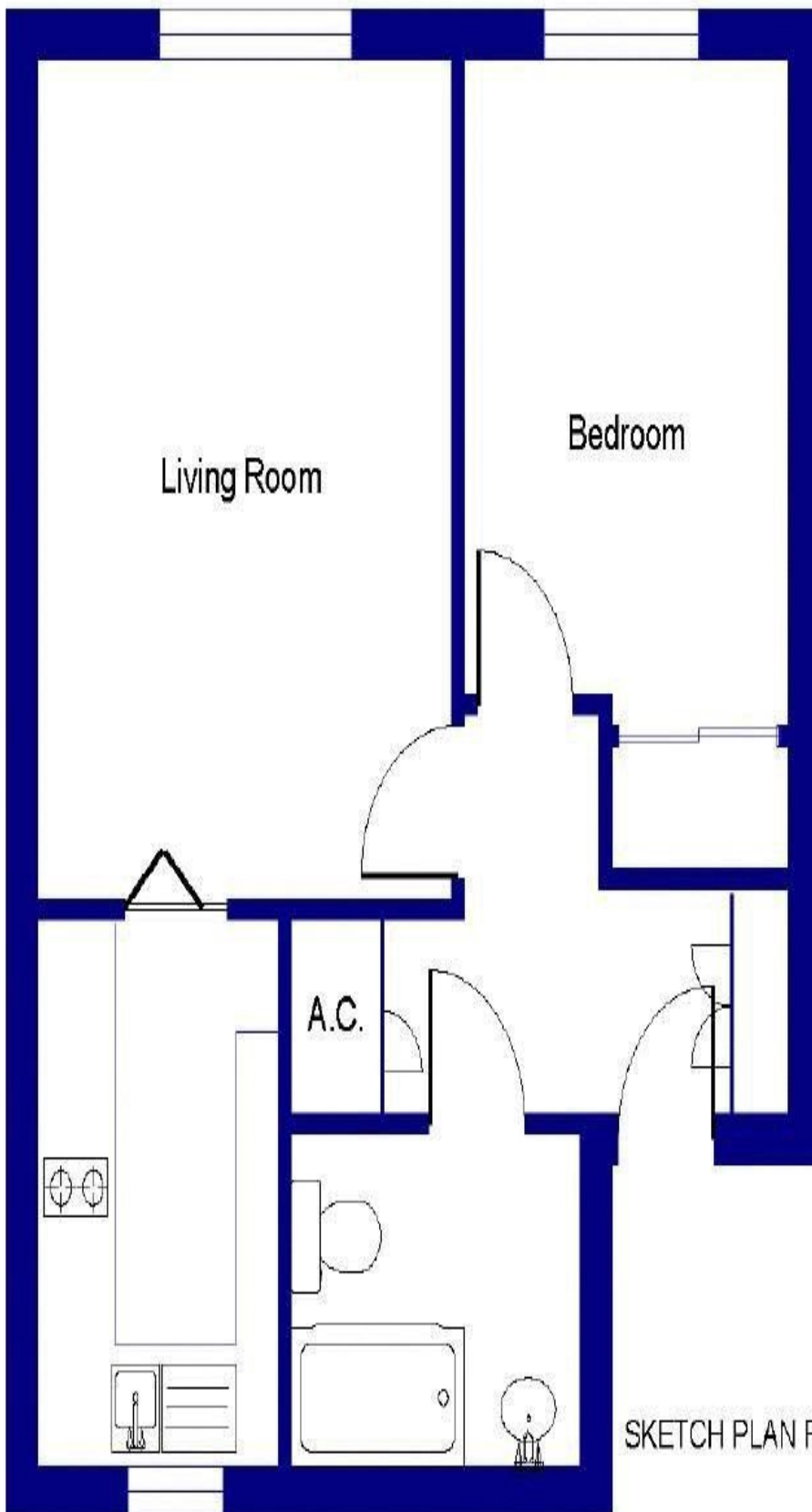
Communal Gardens

**Management Fees £264.44
pcm**

Council Tax Band B £1596

**Residue of 99 Years From
1986 (this can be reverted to
99 years)**





SKETCH PLAN FOR ILLUSTRATIVE PURPOSES ONLY

© 2010 KJP Marketing 01633 25124.2

Kit Johnson Residential
26-33 High St
Weston
Bath
BA1 4BX
01225 444447
sales@kitjohnson.co.uk
www.kitjohnson.co.uk