

KIT JOHNSON

residential



Weston, Bath

£160,000

One Bedroom Retirement Garden Apartment. EPC Grade C



8 Sheppards Gardens
High Street
Weston
Bath
BA1 4DF

PRICE: £160,000

A ground floor garden apartment with its own private entrance in this popular retirement development off Weston High Street, ideal for all the local amenities in the village to include a pharmacy, cafes, small supermarket and Post Office. There is lift access within the main building, communal facilities and unallocated parking. The accommodation includes private porch, living room, fitted kitchen, inner hall, double bedroom and a bathroom. A light and airy apartment set in award winning gardens. Vacant possession.

One Bedroom Retirement Apartment

Private Garden Entrance

Porch & Inner Hall

Living Room

Kitchen

Bathroom

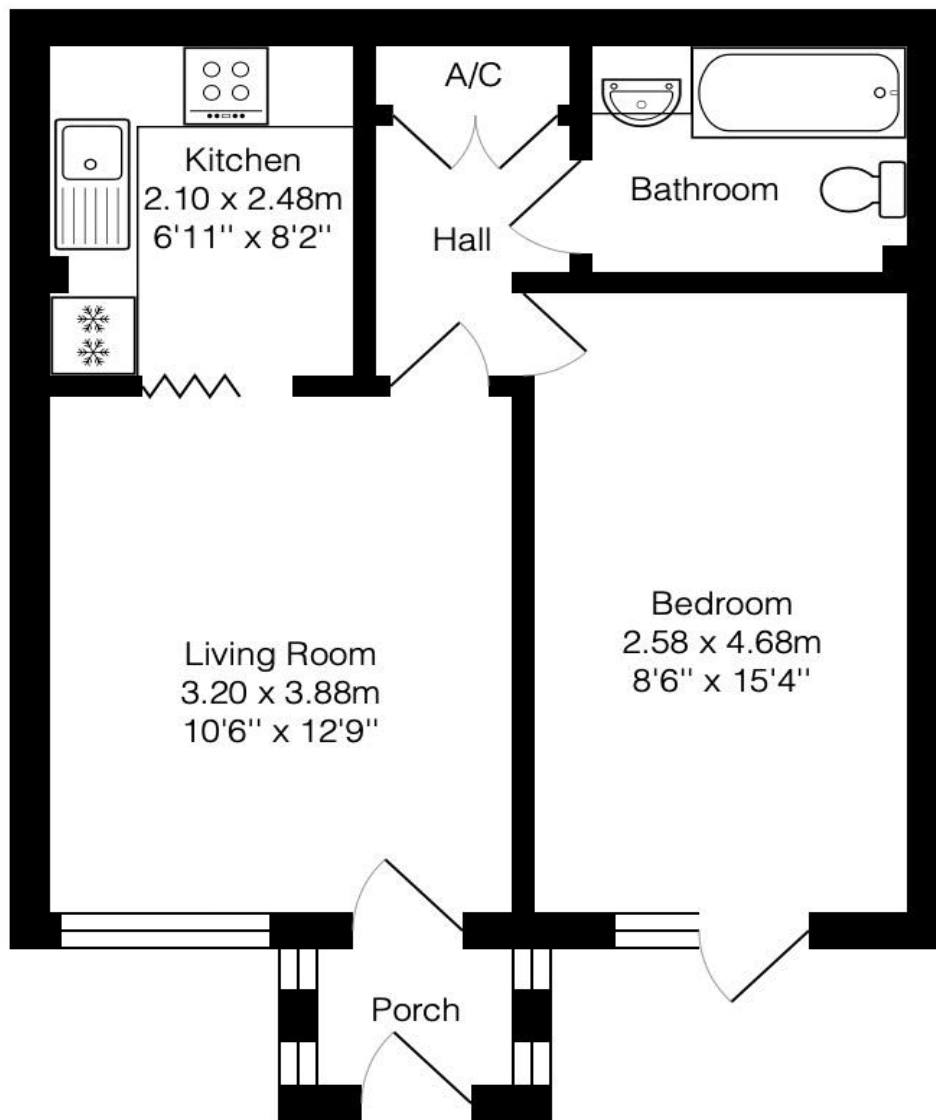
Award Winning Communal Gardens

436 Sq Ft (40.5 Sq Mt)

Council Tax Band B £1596

Service Charge £264.44 PCM





Total Area: 40.5 m² ... 436 ft²

Whilst every attempt has been made to ensure the accuracy of the floorplan contained here, measurements of doors, windows, rooms and any other items are approximate and no responsibility is taken for any error, omission or mis-statement.

This plan is purely for illustrative purposes only and should be used as such by any prospective purchaser.

Area includes internal and external wall thickness

www.epcassessments.co.uk

Kit Johnson Residential
26-33 High St
Weston
Bath
BA1 4BX
01225 444447
sales@kitjohnson.co.uk
www.kitjohnson.co.uk