

Forester Court, Bathwick, Bath BA2 6QZ

**For Sale** - £330,000





**Spacious three bedroom apartments like this one make great homes and rental investments.** Situated on the second floor (top) in the building with its own balcony and garage. The central Bath location is excellent, quietly situated in highly desirable Bathwick on the banks of the river.





### Property Features

Economy electric heating | Double glazed windows | Private balcony with views across the river | Good management company and well-maintained communal gardens

### Did you know?

The river flow and height are controlled throughout the year by the Twerton Weirs (built as part of the Bath Flood Protection Scheme).

### Size

74 sq. m. (800 sq. ft.) approx.

### Tenure

999 year lease from 1968

### Council Tax

Band D: £1,851.70 - 2020/21

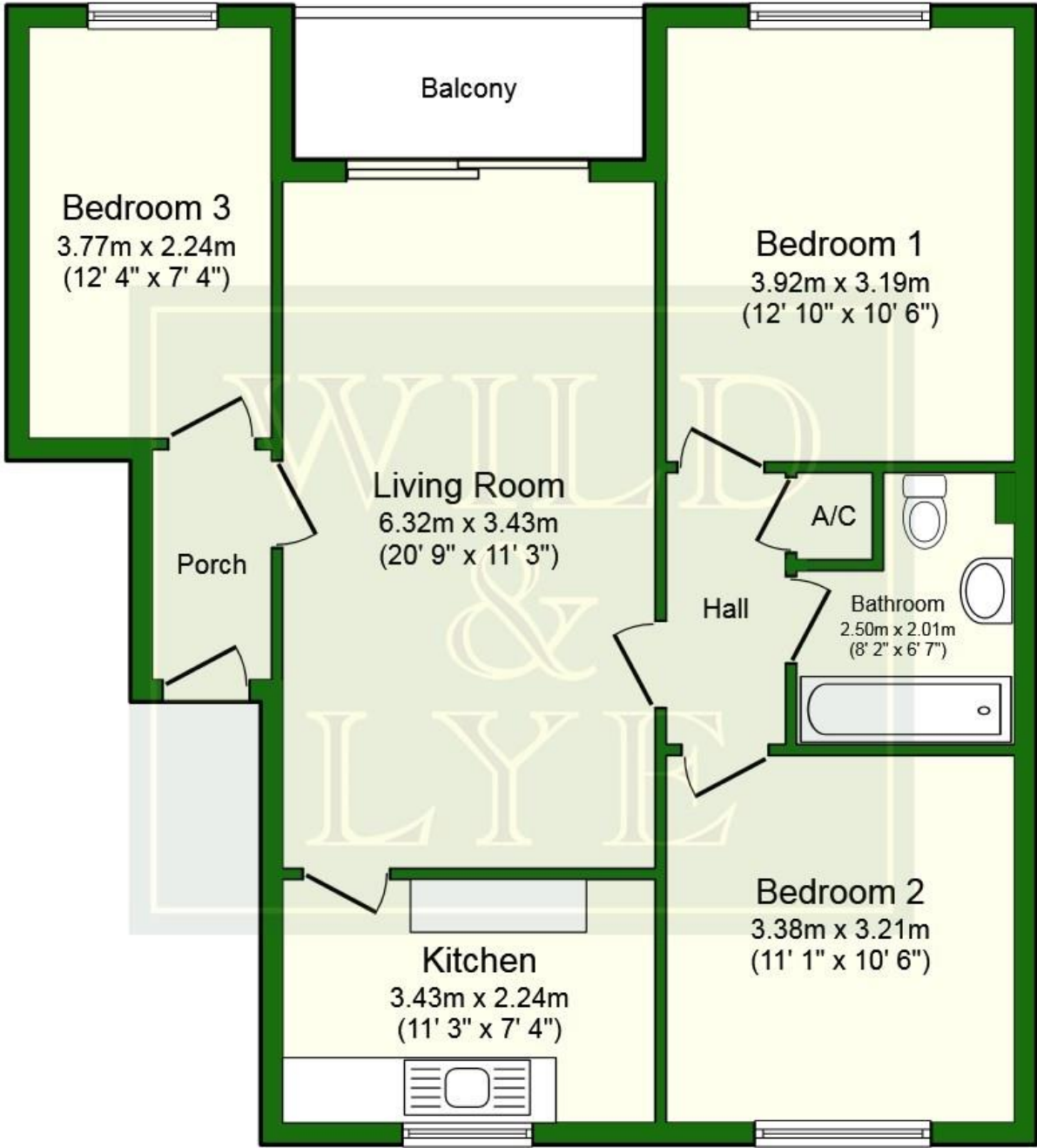


### Arrange a viewing

01225 443322

[www.wildandlye.com](http://www.wildandlye.com)

**Important Notice** 1. Particulars: These particulars are not an offer or contract, nor part of one. You should not rely on statements by Wild & Lye in the particulars or by word of mouth or in writing ("information") as being factually accurate about the property, its condition or its value. Neither Wild & Lye nor any joint agent has any authority to make any representations about the property, and accordingly any information given is entirely without responsibility on the part of the agents, seller(s) or lessor(s). 2. Photos etc: The photographs show only certain parts of the property as they appeared at the time they were taken. Areas, measurements and distances given are approximate only. 3. Regulations etc: Any reference to alterations to, or use of, any part of the property does not mean that any necessary planning, building regulations or other consent has been obtained. A buyer or lessee must find out by inspection or in other ways that these matters have been properly dealt with and that all information is correct.



**Floor Plan**

Score	Energy rating	Current	Potential
92+	A		
81-91	B		81   B
69-80	C		
55-68	D	55   D	
39-54	E		
21-38	F		
1-20	G		





Plenty of space in the Living Room





Kitchen



Bedroom 1



Bedroom 2



Bedroom 3



# Plan your move with Wild & Lye...



Choose a Bath estate agency that advertises  
on the best property websites and offers  
free furniture removal to its sellers.

01225 443322

[wildandlye.com](http://wildandlye.com)