



For Sale £395,000



Oak Street, Bath BA2 3BR

Extended period terraced house with a walled garden in central Bath.

2 Beds | Gas CH | Light and spacious rooms | No onward chain of sales



Phone: 01225 443322 | **Email:** property@wildandlye.com



The large Kitchen is a single storey extension at the back of the house

Attractive features

The walled garden would be a safe space for a dog and we like the size of the ground floor Living Room (which was previously two rooms). Two good size bedrooms and a bathroom upstairs.

Location

Conveniently central and so most things are within walking distance.

Council Tax

Band C

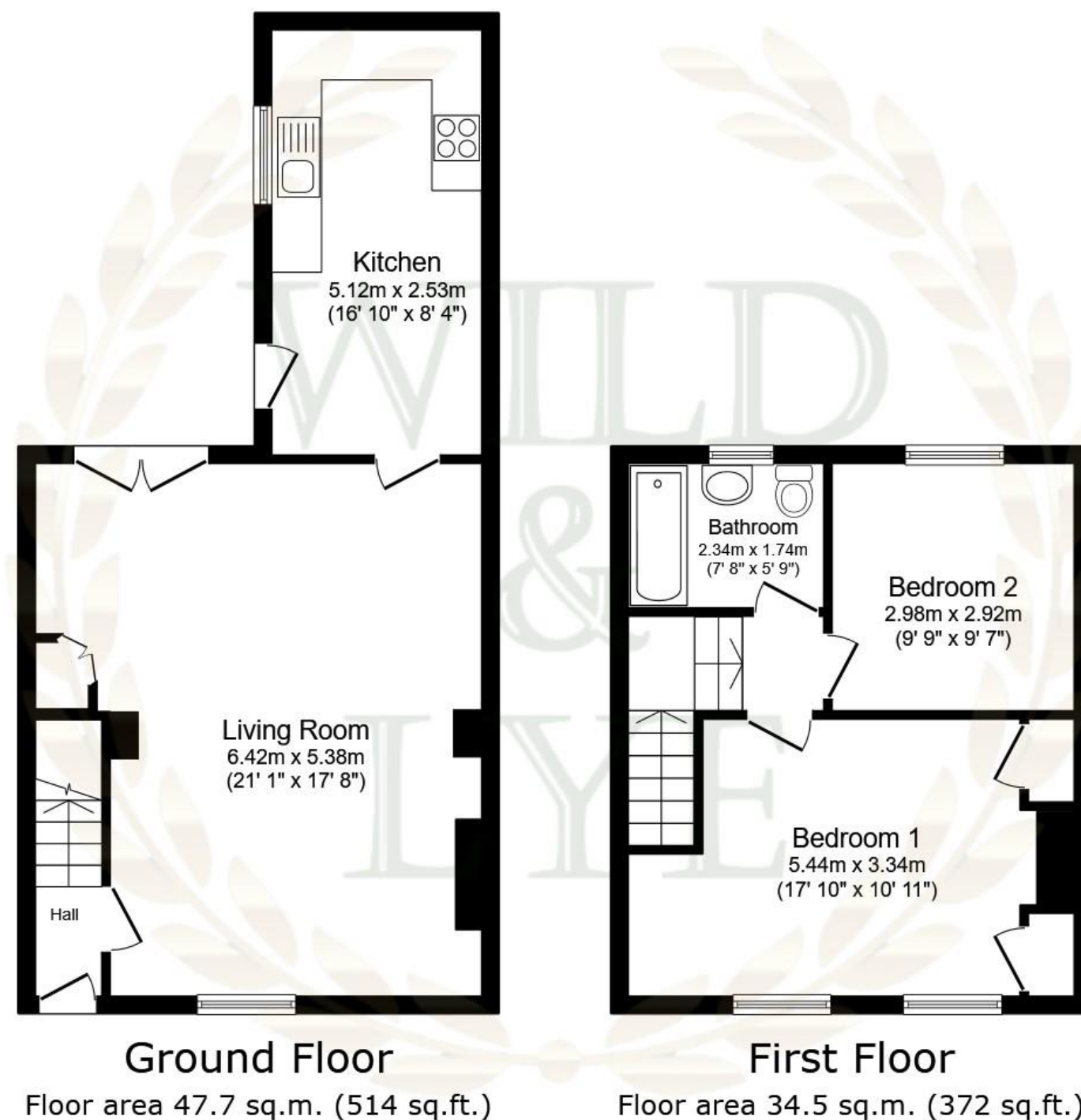
Score	Energy rating	Current	Potential
92+	A		
81-91	B		85 B
69-80	C		
55-68	D	60 D	
39-54	E		
21-38	F		
1-20	G		

Arrange a viewing

01225 443322

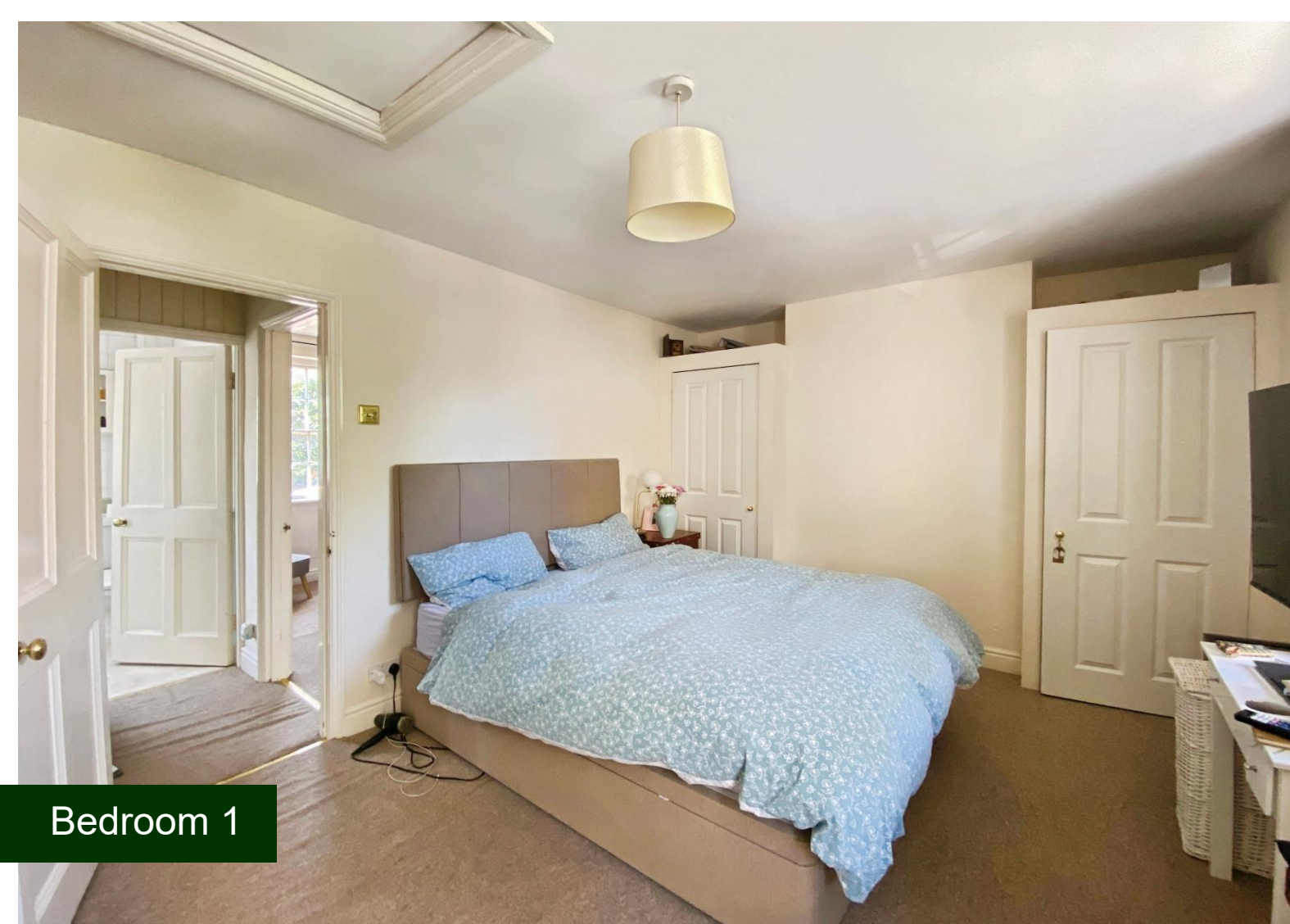
www.wildandlye.com

Important Notice 1. Particulars: These particulars are not an offer or contract, nor part of one. You should not rely on statements by Wild & Lye in the particulars or by word of mouth or in writing ("information") as being factually accurate about the property, its condition or its value. Neither Wild & Lye nor any joint agent has any authority to make any representations about the property, and accordingly any information given is entirely without responsibility on the part of the agents, seller(s) or lessor(s). 2. Photos etc: The photographs show only certain parts of the property as they appeared at the time they were taken. Areas, measurements and distances given are approximate only. 3. Regulations etc: Any reference to alterations to, or use of, any part of the property does not mean that any necessary planning, building regulations or other consent has been obtained. A buyer or lessee must find out by inspection or in other ways that these matters have been properly dealt with and that all information is correct.

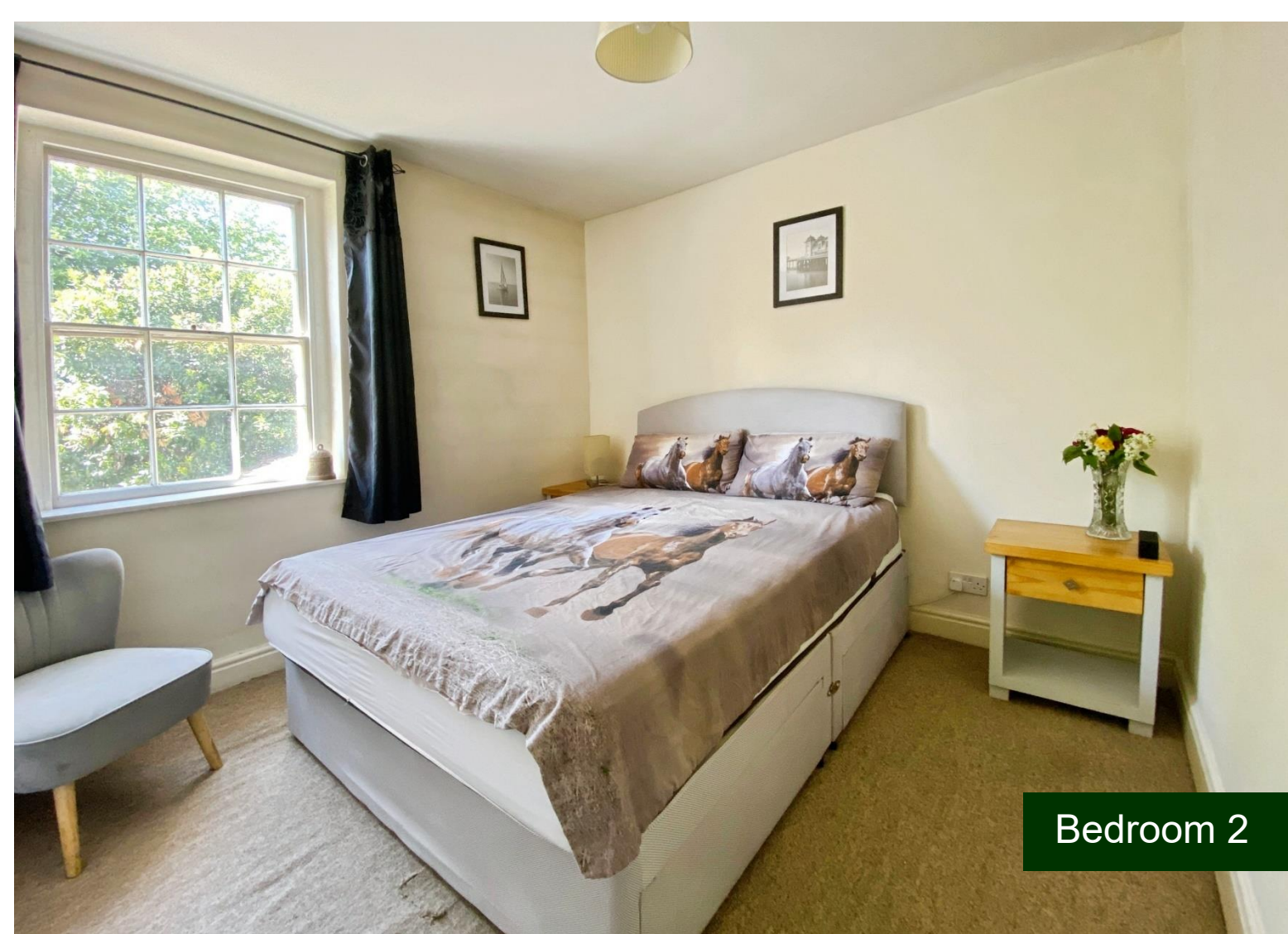


Total floor area: 82.3 sq.m. (886 sq.ft.)

This floor plan is for illustrative purposes only. It is not drawn to scale. Any measurements, floor areas (including any total floor area), openings and orientations are approximate. No details are guaranteed, they cannot be relied upon for any purpose and do not form any part of any agreement. No liability is taken for any error, omission or misstatement. A party must rely upon its own inspection(s). Powered by www.Propertybox.io



Bedroom 1



Bedroom 2



FREE
FURNITURE
REMOVAL



When you
sell your
home with

**WILD
&
LYE**

01225 443322
wildandlye.com