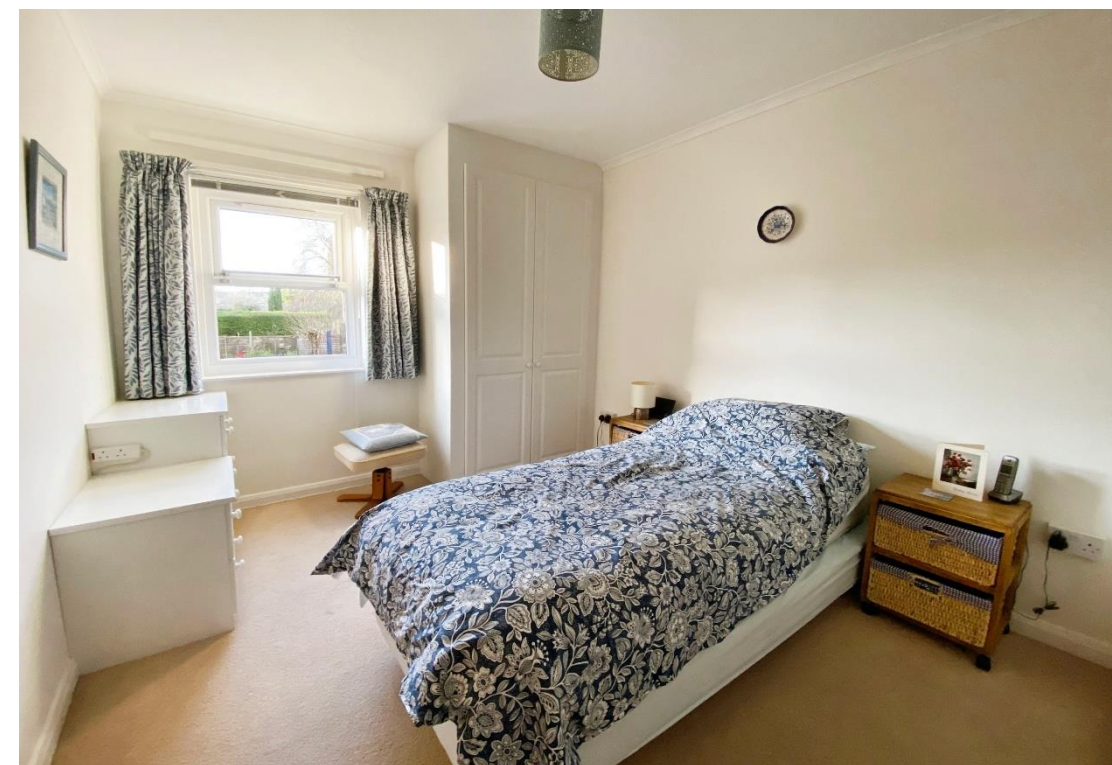




For Sale £125,000 Fixed Price



18 Summerlays Court, Widcombe, Bath BA2 4HU

Mid-floor apartment in a very convenient central Bath location.

1 Bed | Well presented throughout | Electric heating | Residents' parking

Phone: 01225 443322 | Email: property@wildandlye.com





Additional information

Fixed price equivalent to 70% of total value | No onward chain of sales | Minimum age for residency of 55

Location

Summerlays Court is less than a ten minute walk into the city centre and about the same to Bath Spa Railway Station. Widcombe also has its own parade of shops which is an eclectic mix of amenities, businesses and eateries

Service Charge

£111.51 per calendar month

Tenure

New 70 year lease

Council Tax

Band B

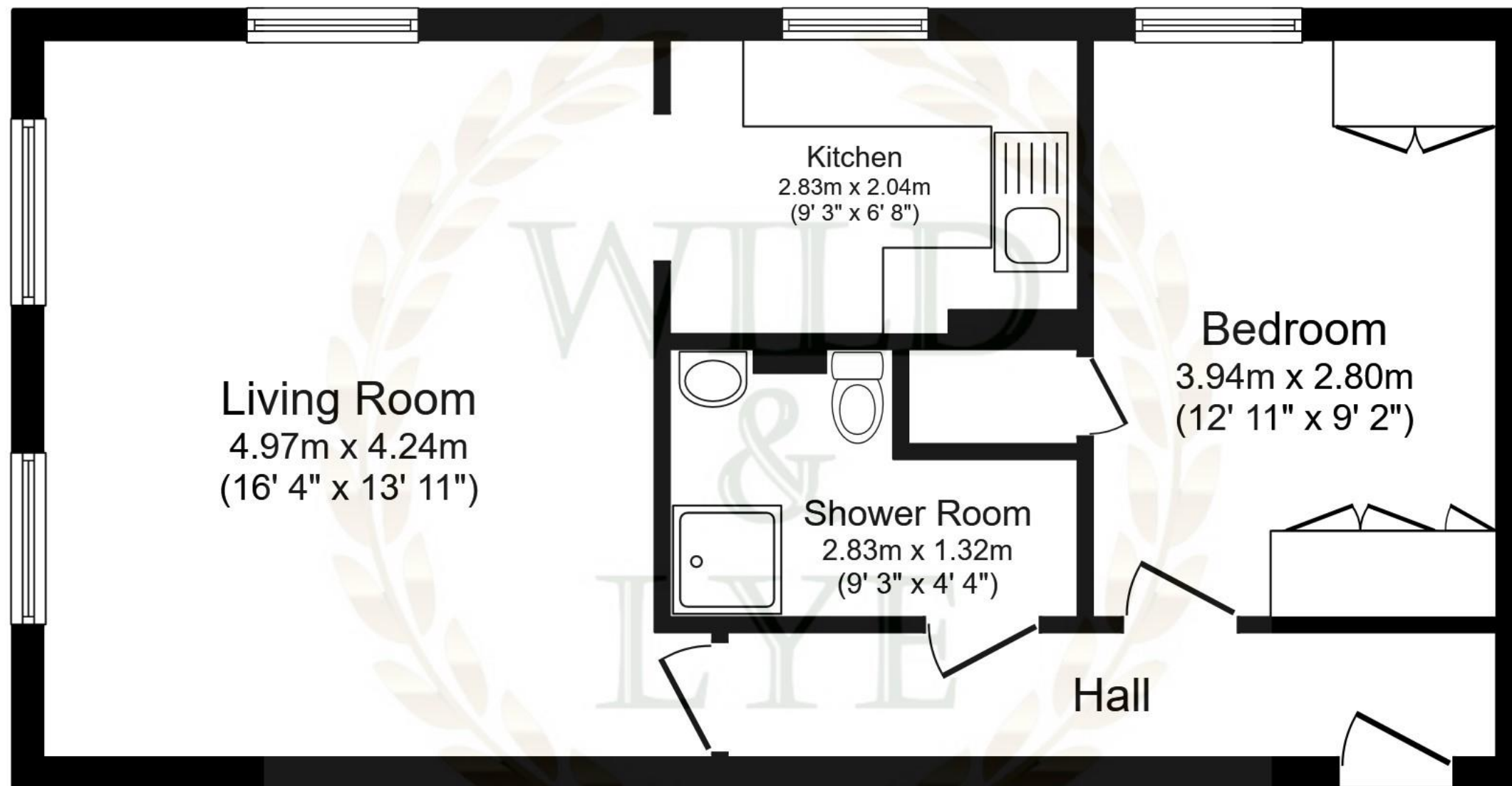
Score	Energy rating	Current	Potential
92+	A		
81-91	B		
69-80	C	71 C	78 C
55-68	D		
39-54	E		
21-38	F		
1-20	G		

Arrange a viewing

01225 443322

www.wildandlye.com

Important Notice 1. Particulars: These particulars are not an offer or contract, nor part of one. You should not rely on statements by Wild & Lye in the particulars or by word of mouth or in writing ("information") as being factually accurate about the property, its condition or its value. Neither Wild & Lye nor any joint agent has any authority to make any representations about the property, and accordingly any information given is entirely without responsibility on the part of the agents, seller(s) or lessor(s). 2. Photos etc: The photographs show only certain parts of the property as they appeared at the time they were taken. Areas, measurements and distances given are approximate only. 3. Regulations etc: Any reference to alterations to, or use of, any part of the property does not mean that any necessary planning, building regulations or other consent has been obtained. A buyer or lessee must find out by inspection or in other ways that these matters have been properly dealt with and that all information is correct.



Ref: 2383

Floor area 50.0 m² (539 sq.ft.)

TOTAL: 50.0 m² (539 sq.ft.)

This floor plan is for illustrative purposes only. It is not drawn to scale. Any measurements, floor areas (including any total floor area), openings and orientations are approximate. No details are guaranteed, they cannot be relied upon for any purpose and do not form any part of any agreement. No liability is taken for any error, omission or misstatement. A party must rely upon its own inspection(s). Powered by www.Propertybox.io

Check out all our homes on
rightmove 

