



For Sale £395,000



Harbutts, Bathampton, Bath BA2 6TA

Freehold terraced house by the canal in the old part of the village.

2 Beds | Gas central heating | Double glazed | Garage | Peaceful surroundings

Phone: 01225 443322 | **Email:** property@wildandlye.com





Additional information

On-site Manager | 24 hour emergency Careline system |
No onward chain | Minimum age for residency of 55

Service Charge

Approximately £4,000 pa. Includes exterior
maintenance, decoration and repairs (including roof),
building insurance and window cleaning

Location

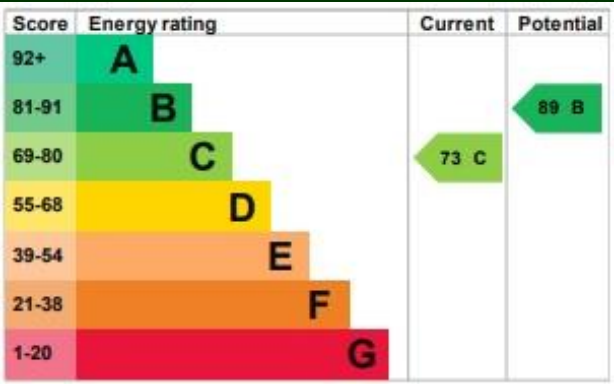
Bathampton is about 2 miles (3 km) east of Bath on the
south bank of the River Avon. The Kennet and Avon
Canal passes through the village and a toll bridge links
Bathampton to Batheaston. It's a thriving village with an
annual Flower Show, Primary School, two churches
(Methodist and CofE), two gastro-pubs, Spar shop, café,
dentist and doctors' surgery.

Tenure

Freehold

Council Tax

Band E

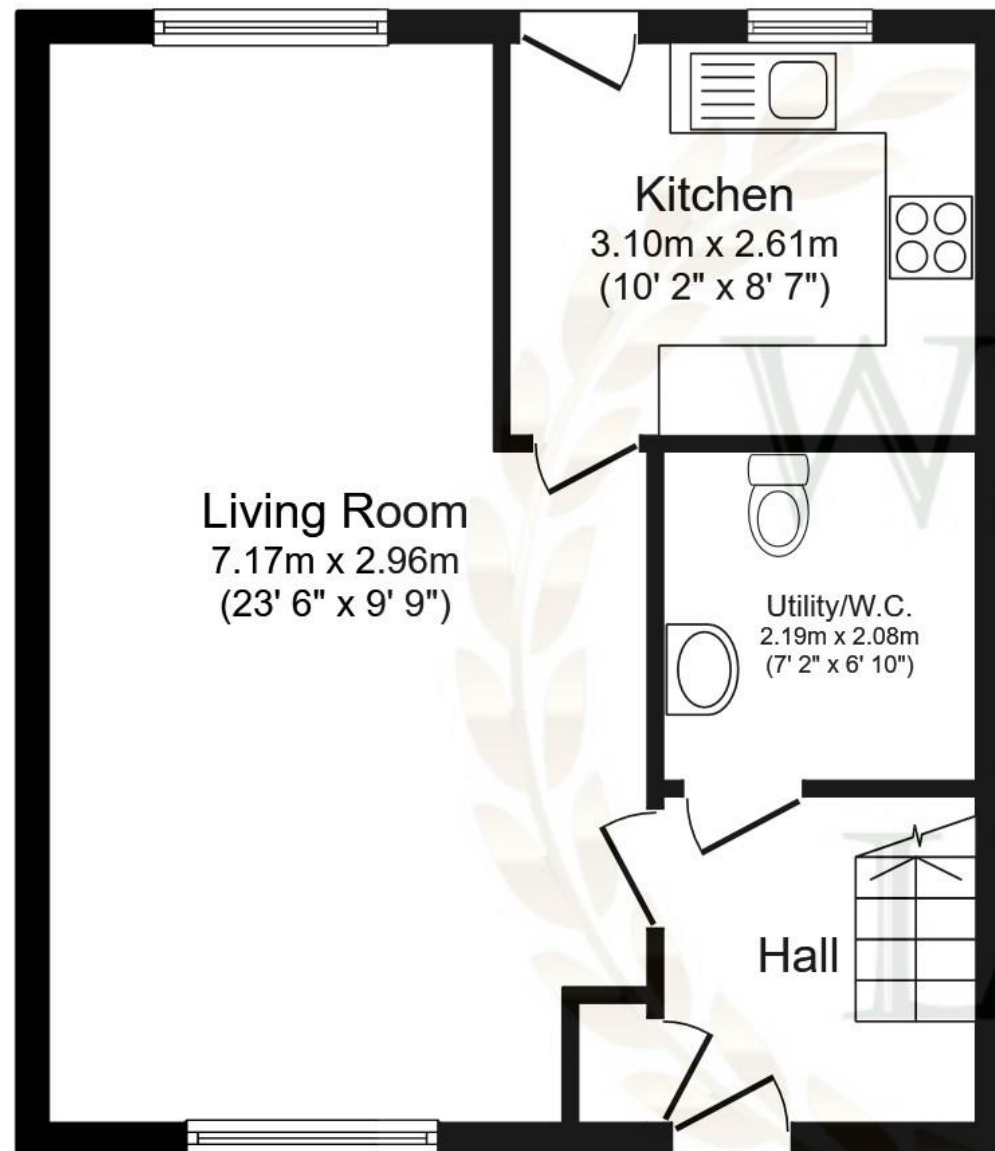


Arrange a viewing

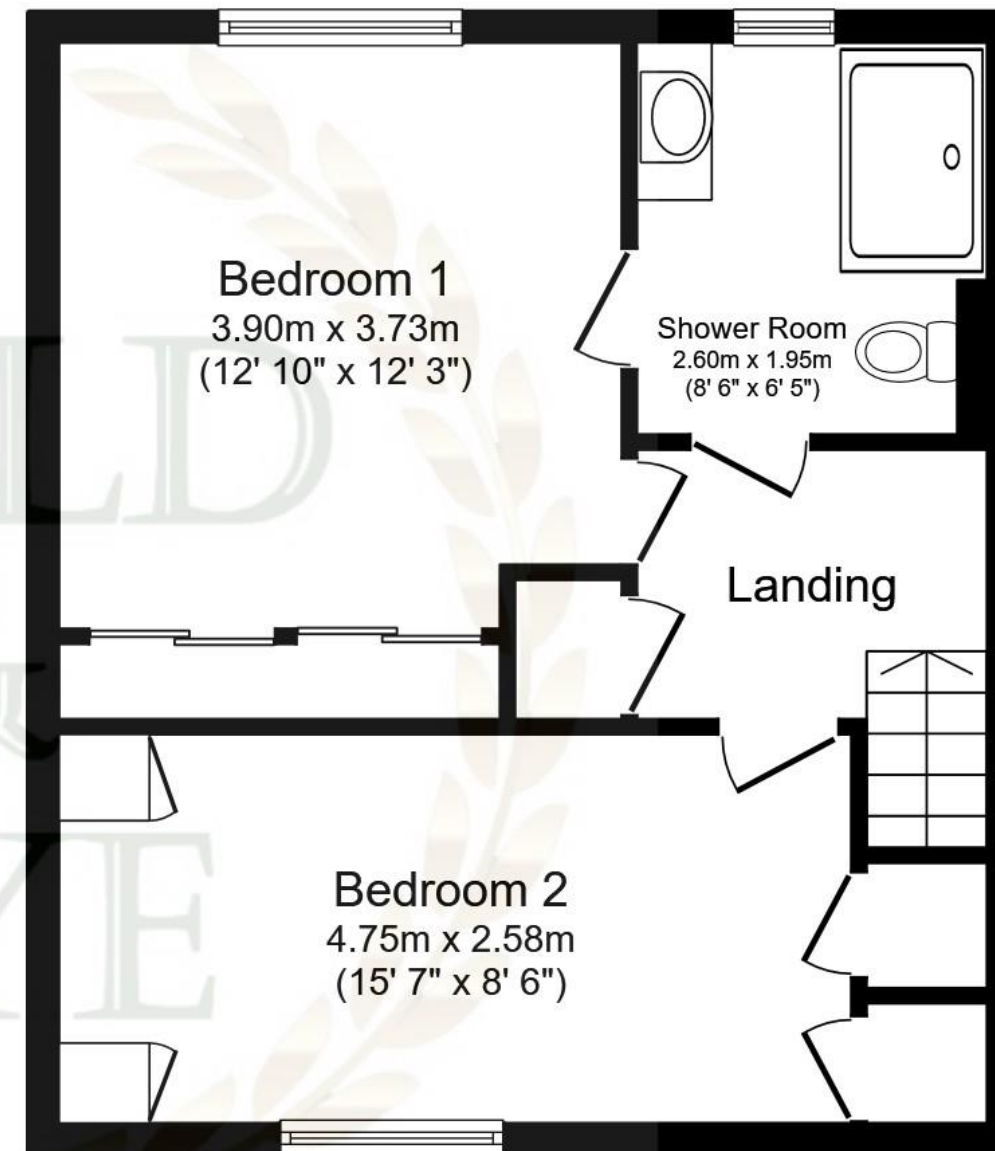
01225 443322

www.wildandlye.com

Important Notice 1. Particulars: These particulars are not an offer or contract, nor part of one. You should not rely on statements by Wild & Lye in the particulars or by word of mouth or in writing ("information") as being factually accurate about the property, its condition or its value. Neither Wild & Lye nor any joint agent has any authority to make any representations about the property, and accordingly any information given is entirely without responsibility on the part of the agents, seller(s) or lessor(s). 2. Photos etc: The photographs show only certain parts of the property as they appeared at the time they were taken. Areas, measurements and distances given are approximate only. 3. Regulations etc: Any reference to alterations to, or use of, any part of the property does not mean that any necessary planning, building regulations or other consent has been obtained. A buyer or lessee must find out by inspection or in other ways that these matters have been properly dealt with and that all information is correct.



Ground Floor
Floor area 44.2 m² (475 sq.ft.)



First Floor
Floor area 44.2 m² (475 sq.ft.)

TOTAL: 88.3 m² (951 sq.ft.)

This floor plan is for illustrative purposes only. It is not drawn to scale. Any measurements, floor areas (including any total floor area), openings and orientations are approximate. No details are guaranteed, they cannot be relied upon for any purpose and do not form any part of any agreement. No liability is taken for any error, omission or misstatement. A party must rely upon its own inspection(s). Powered by www.Propertybox.io



FREE
FURNITURE
REMOVAL



When you
sell your
home with



01225 443322
wildandlye.com