



10 The Moorings, Sydney Wharf, Bath BA2 4AZ
For Sale - £325,000



Spacious and well-appointed two bedroom apartment situated on the ground floor of this luxurious modern Georgian-style mansion in central Bath. Ownership is restricted to buyers 60+ years of age and The Moorings has excellent communal facilities which include a lift to all floors, secure parking, residents' meeting room and balcony overlooking the canal, guest suite, laundry room and building manager. Situated a short way up Bathwick Hill, with a Tesco Express over the road for day-to-day shopping.



Property features

Tastefully decorated throughout | Bathroom and en-suite Shower Room |
Economic electric heating | Kitchen with enamel sink, electric hob and
oven| Fitted wardrobes in main bedroom

Video Tour

<https://youtu.be/zBjmI0dbyCw>

Tenure

Leasehold. 125 years from 1998

Service Charge

Approx. £3,652 pa. Ground Rent £722 pa

Council Tax

Band E



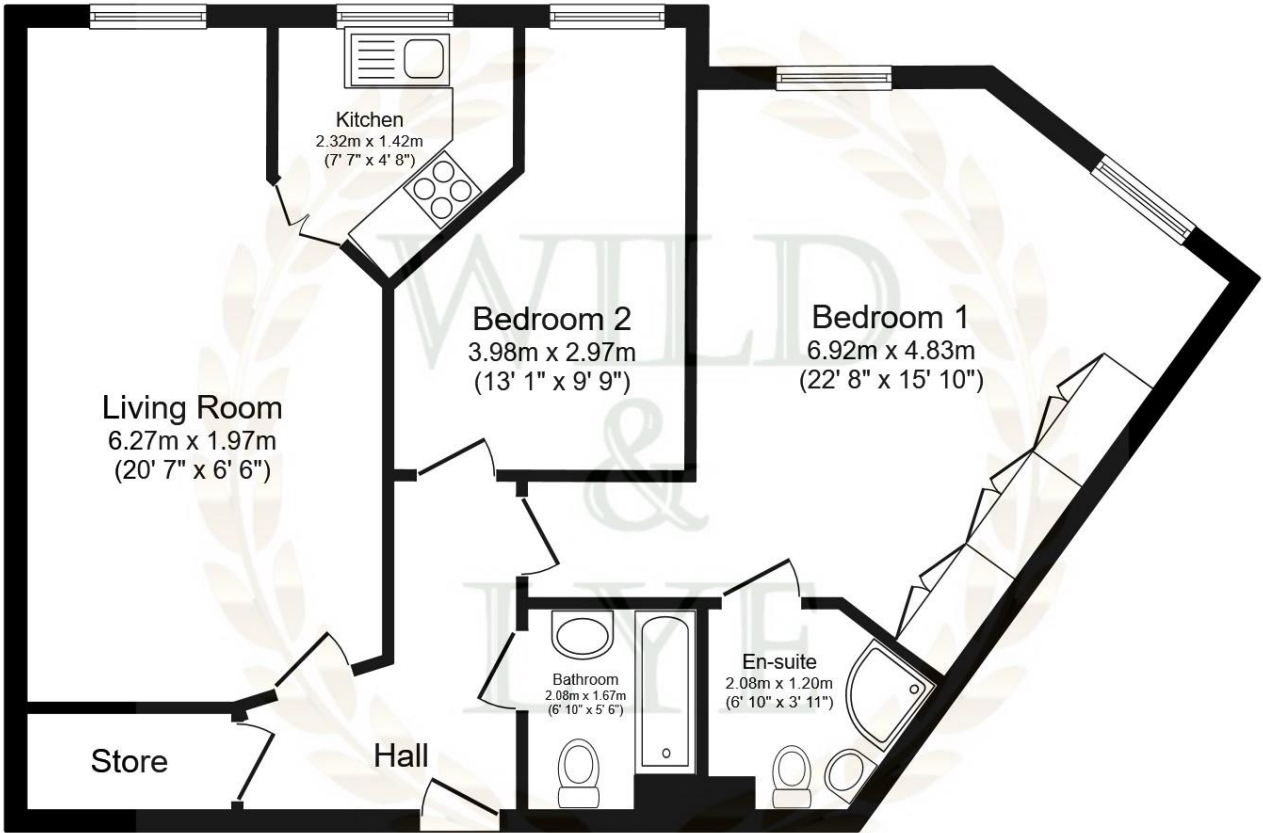
Arrange a viewing

01225 443322

www.wildandlye.com

Important Notice 1. Particulars: These particulars are not an offer or contract, nor part of one. You should not rely on statements by Wild & Lye in the particulars or by word of mouth or in writing ("information") as being factually accurate about the property, its condition or its value. Neither Wild & Lye nor any joint agent has any authority to make any representations about the property, and accordingly any information given is entirely without responsibility on the part of the agents, seller(s) or lessor(s). 2. Photos etc: The photographs show only certain parts of the property as they appeared at the time they were taken. Areas, measurements and distances given are approximate only. 3. Regulations etc: Any reference to alterations to, or use of, any part of the property does not mean that any necessary planning, building regulations or other consent has been obtained. A buyer or lessee must find out by inspection or in other ways that these matters have been properly dealt with and that all information is correct.

Score	Energy rating	Current	Potential
92+	A		
81-91	B		
69-80	C		72 C
55-68	D	67 D	
39-54	E		
21-38	F		
1-20	G		

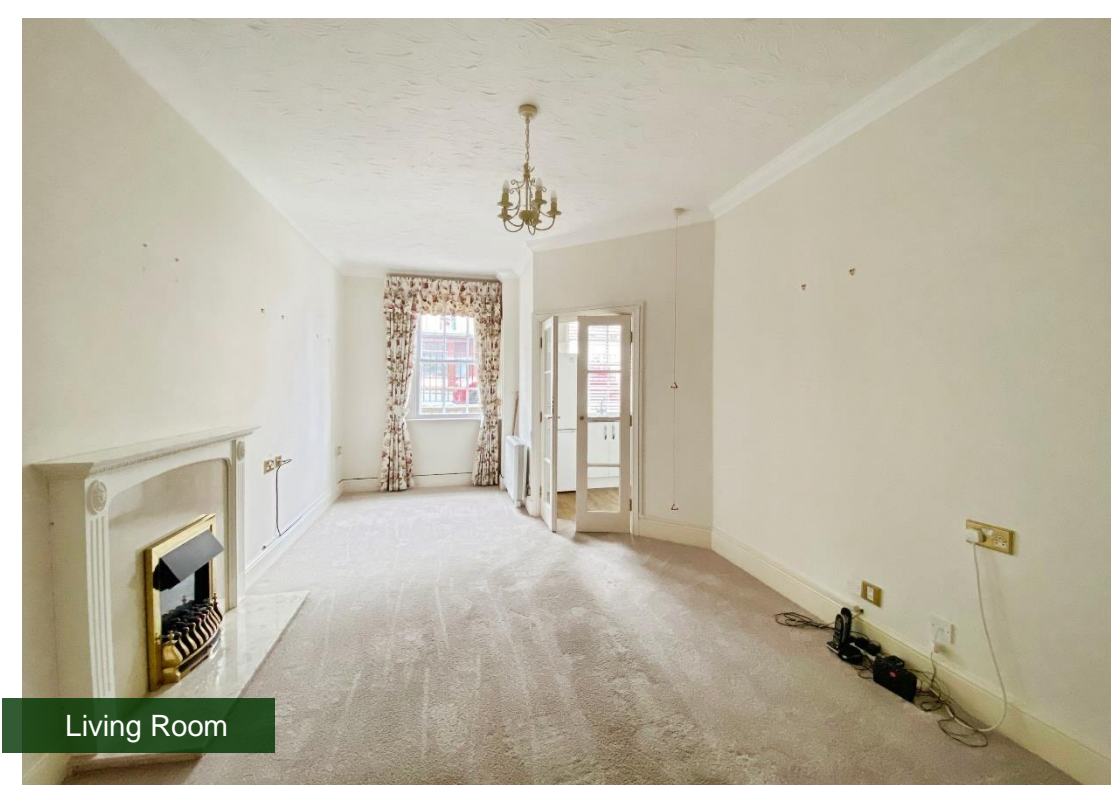


Floor Plan

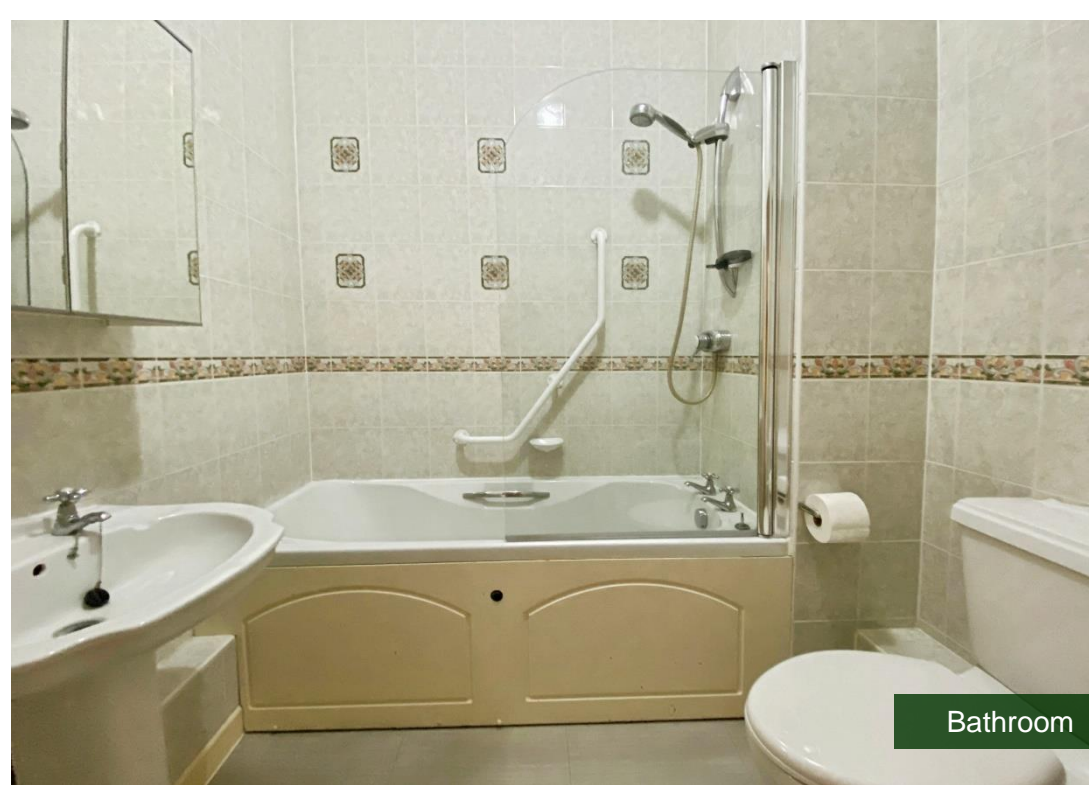
Floor area 75.7 m² (815 sq.ft.)

TOTAL: 75.7 m² (815 sq.ft.)

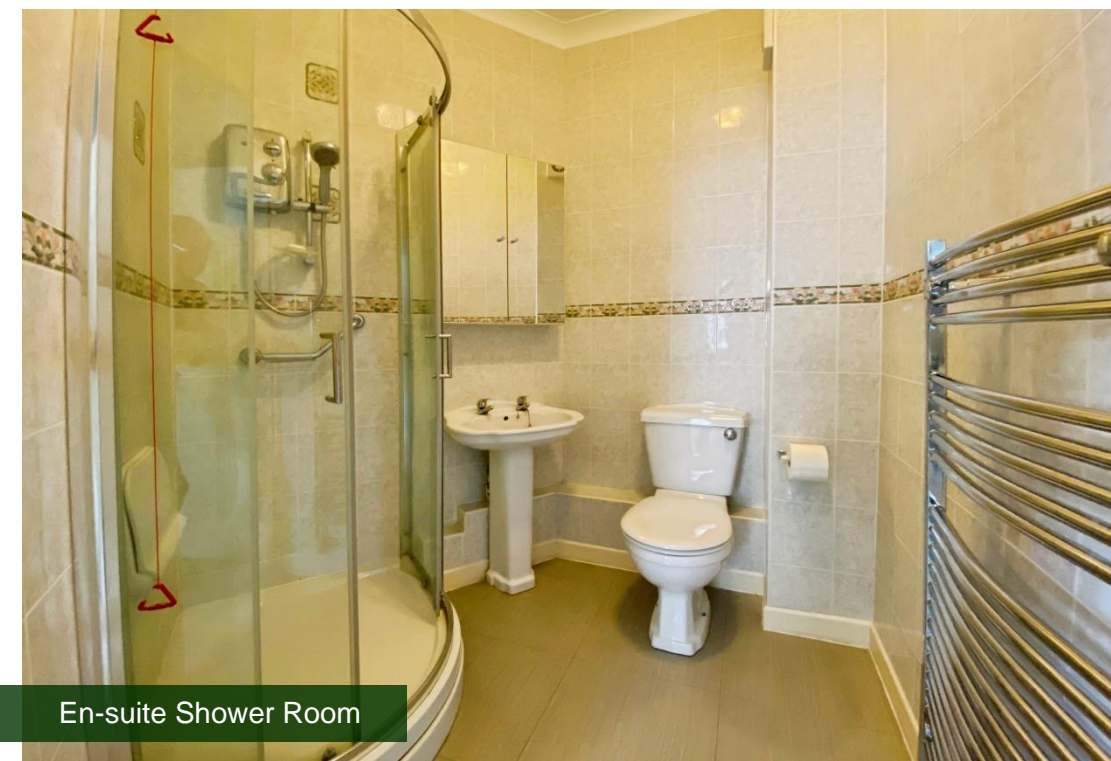
This floor plan is for illustrative purposes only. It is not drawn to scale. Any measurements are approximate. No details are guaranteed, they cannot be relied upon for any purpose and misstatement. A party must rely upon its own inspection(s). Powered by www.Property.com



Living Room



Bathroom



En-suite Shower Room



Bedroom 2

FREE
FURNITURE
REMOVAL



When you
sell your
home with



01225 443322
wildandlye.com