



Rockliffe Avenue, Bathwick, Bath BA2 6QP

For Sale - £495,000



This spacious terraced house is in one the most sought-after central Bath locations. Potential for enhancement to create a more visually appealing home (think wood cladding on the front elevation, fashionable grey windows etc...). Enjoying a leafy easterly aspect with city views and very practical with its garage and additional parking space.



Property Features

Gas central heating | Double glazed windows | Energy efficient | Parking space and Garage (5.11m x 2.44m)

Location

Bathwick is popular with a variety of different age groups as there really is something for everyone. Away from main roads, surrounded by beautiful parks, walks along the canal, short walk from two of the best schools in Bath, the city centre, train and bus station.

Size

100 sq. m. (1085 sq. ft.) approx.

Tenure

Leasehold. 999 years from 24 June 1966

Council Tax

Band D

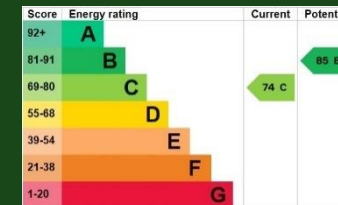


Arrange a viewing

01225 443322

www.wildandlye.com

Important Notice 1. Particulars: These particulars are not an offer or contract, nor part of one. You should not rely on statements by Wild & Lye in the particulars or by word of mouth or in writing ("information") as being factually accurate about the property, its condition or its value. Neither Wild & Lye nor any joint agent has any authority to make any representations about the property, and accordingly any information given is entirely without responsibility on the part of the agents, seller(s) or lessor(s). 2. Photos etc: The photographs show only certain parts of the property as they appeared at the time they were taken. Areas, measurements and distances given are approximate only. 3. Regulations etc: Any reference to alterations to, or use of, any part of the property does not mean that any necessary planning, building regulations or other consent has been obtained. A buyer or lessee must find out by inspection or in other ways that these matters have been properly dealt with and that all information is correct.



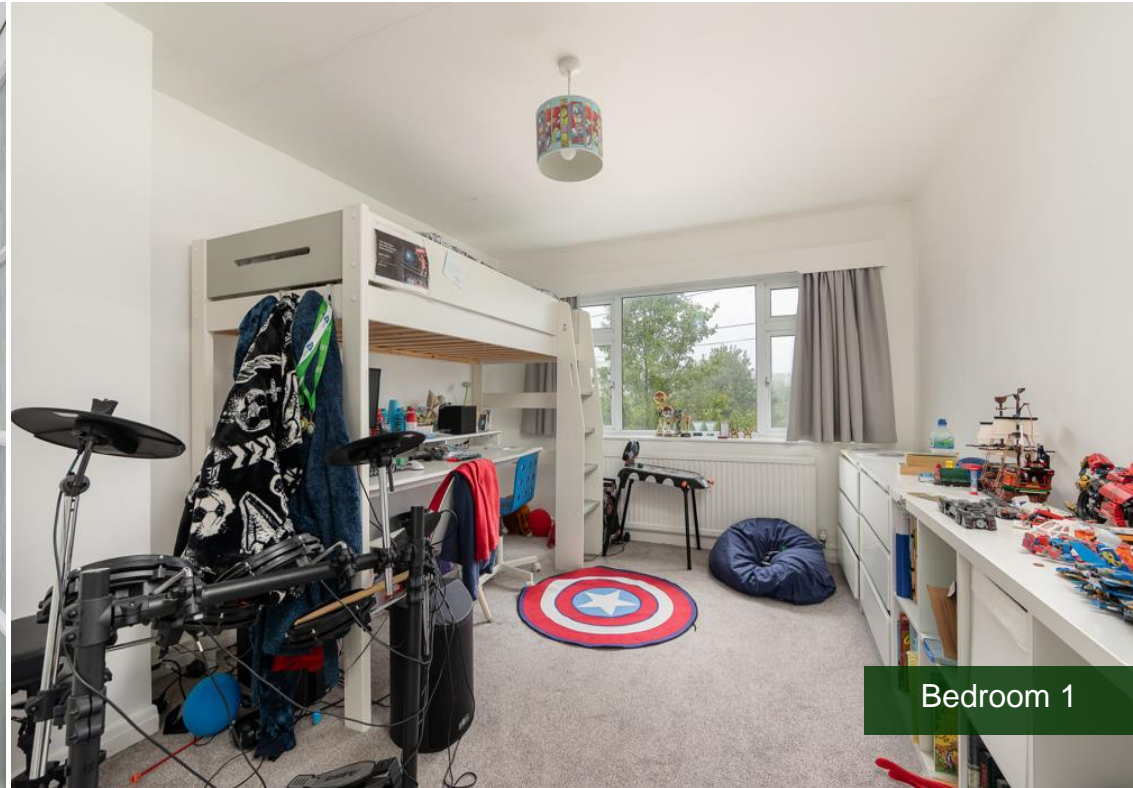
Ground Floor Floor area 54.1 m² (582 sq.ft.) **First Floor** Floor area 46.7 m² (503 sq.ft.)



Sitting Room



Dining Room (on floor plan)



Bedroom 1



Bedroom 2



Bedroom 3



When you sell your home with

FREE
FURNITURE
REMOVAL



WILD & LYE

01225 443322
wildandlye.com