



14 Minerva Court, St. John's Road, Bathwick, Bath BA2 6PL

**For Sale** - £199,500



**Superbly presented and upgraded one bedroom apartment on the first floor of this sought-after building with a lift.** Everything in Minerva Court is well-managed and it provides an economic and comfortable lifestyle for apartment owners aged 55+ in a convenient central Bath location.



Hall

### Property features

Electric heating | Double glazed windows | High quality Kitchen with ceramic hob, oven and cooker extractor hood, integrated fridge and freezer | 24hr emergency call system | Warden assistance, lift to all floors, communal meeting room, on-site parking, laundry room and guest suite (booking and extra payment required)

### Size

50 sq. m. (541 sq. ft.) approx.

### Tenure

Leasehold for 125 years from 1988

### Service Charge 2021/2022

Approx. £298 pcm which includes the rent payment to Curo for their 40% Equity Share.

### Council Tax

Band C: £1,696.83 – 2022/23



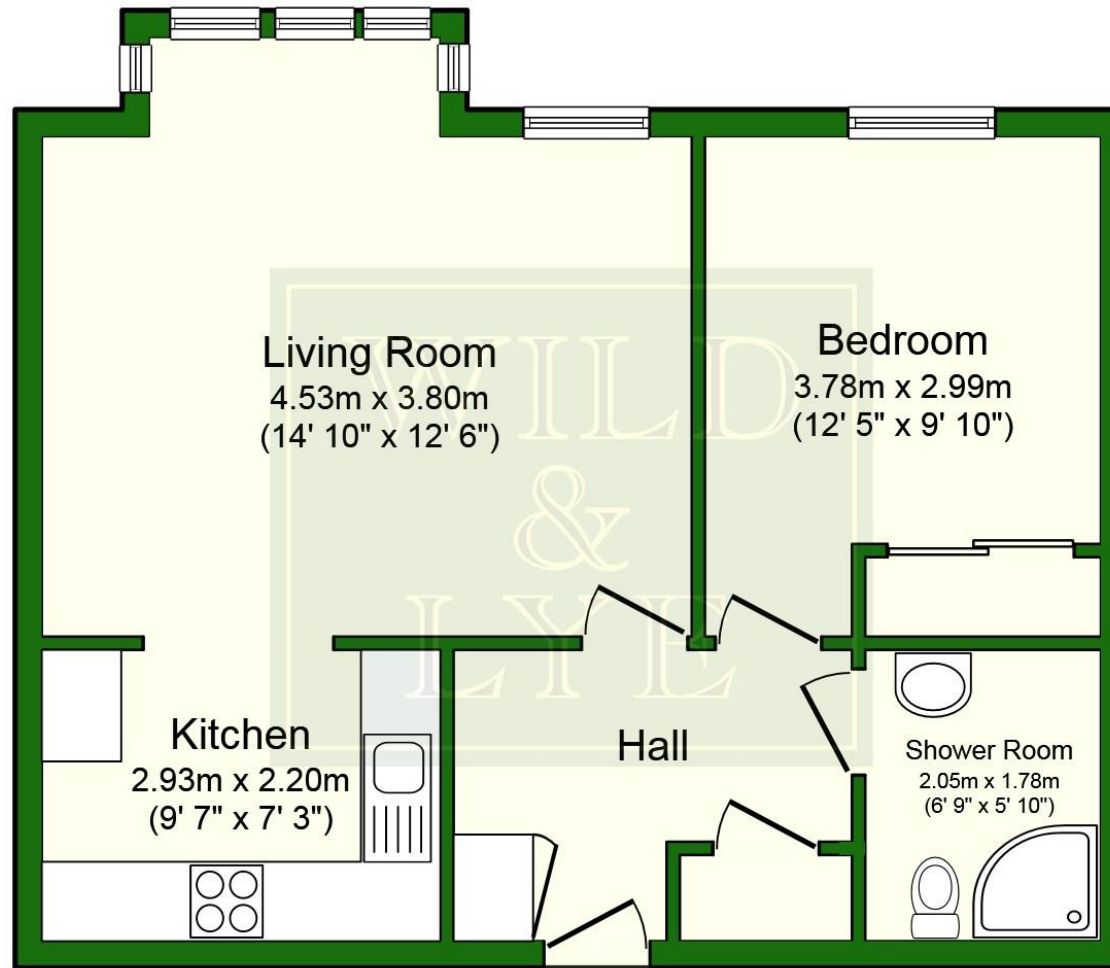
Arrange a viewing

01225 443322

[www.wildandlye.com](http://www.wildandlye.com)

**Important Notice** 1. Particulars: These particulars are not an offer or contract, nor part of one. You should not rely on statements by Wild & Lye in the particulars or by word of mouth or in writing ("information") as being factually accurate about the property, its condition or its value. Neither Wild & Lye nor any joint agent has any authority to make any representations about the property, and accordingly any information given is entirely without responsibility on the part of the agents, seller(s) or lessor(s). 2. Photos etc: The photographs show only certain parts of the property as they appeared at the time they were taken. Areas, measurements and distances given are approximate only. 3. Regulations etc: Any reference to alterations to, or use of, any part of the property does not mean that any necessary planning, building regulations or other consent has been obtained. A buyer or lessee must find out by inspection or in other ways that these matters have been properly dealt with and that all information is correct.

Score	Energy rating	Current	Potential
92+	A		
81-91	B		
69-80	C	78   c	80   c
55-68	D		
39-54	E		
21-38	F		
1-20	G		



**First Floor**



Plan your move  
with Wild & Lye...

rightmove  
ZOOPLA  
PrimeLocation

Choose a Bath estate agency that advertises  
on the best property websites and offers  
free furniture removal to its sellers.

01225 443322 [wildandlye.com](http://wildandlye.com)