

Alpine Gardens, Bath BA1 5PB
For Sale - Guide Price £425,000



This stylish three bedroom terraced house is typically spacious for a 1960's home and enjoys a panoramic view just minutes walk from the city centre. Quietly situated away from main roads, next to Hedgemoor Park, the house is superbly presented for sale.



Property Features

Gas central heating | Double glazed windows | Fully networked with data points in principal rooms | Basement storage (accessed from floor hatch in Living Room) | Garage with electricity supply | Easily managed garden

Video Tour

<https://youtu.be/tCeFp5sdLX4>

Size

80.5 sq. m. (867 sq. ft.) approx.

Tenure

Freehold

Council Tax

Band C: £1,645.94 - 2021/22



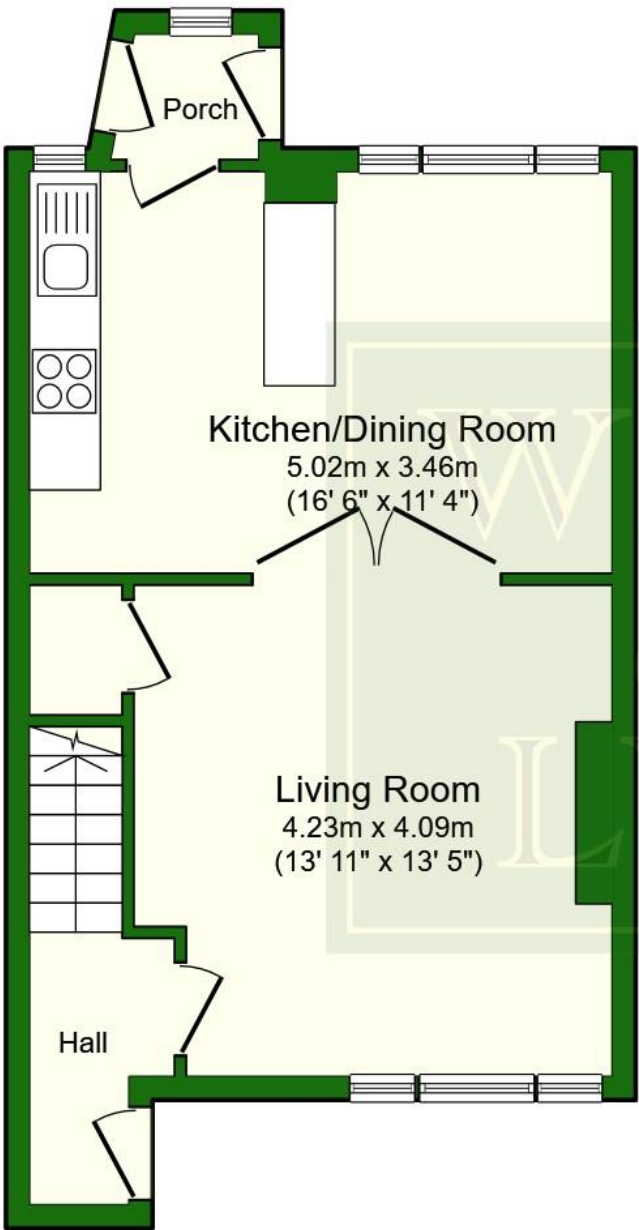
Arrange a viewing

01225 443322

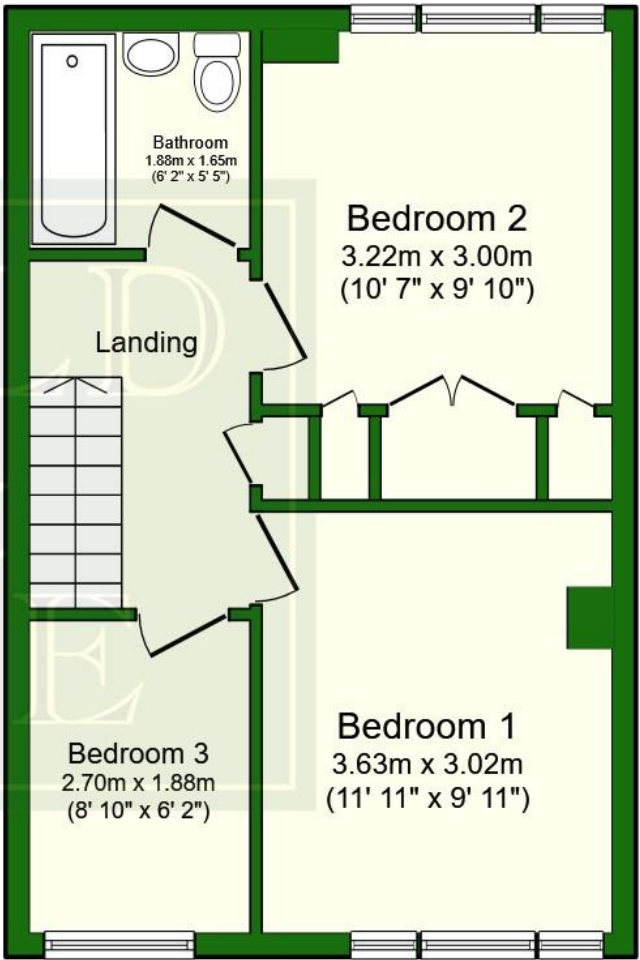
www.wildandlye.com

Important Notice 1. Particulars: These particulars are not an offer or contract, nor part of one. You should not rely on statements by Wild & Lye in the particulars or by word of mouth or in writing ("information") as being factually accurate about the property, its condition or its value. Neither Wild & Lye nor any joint agent has any authority to make any representations about the property, and accordingly any information given is entirely without responsibility on the part of the agents, seller(s) or lessor(s). 2. Photos etc: The photographs show only certain parts of the property as they appeared at the time they were taken. Areas, measurements and distances given are approximate only. 3. Regulations etc: Any reference to alterations to, or use of, any part of the property does not mean that any necessary planning, building regulations or other consent has been obtained. A buyer or lessee must find out by inspection or in other ways that these matters have been properly dealt with and that all information is correct.

| Score | Energy rating | Current | Potential |
|-------|---------------|---------|-----------|
| 92+ | A | | |
| 81-91 | B | | 85 B |
| 69-80 | C | 69 C | |
| 55-68 | D | | |
| 39-54 | E | | |
| 21-38 | F | | |
| 1-20 | G | | |



Ground Floor



First Floor





Bedroom 1



Bedroom 2



Bedroom 3





Rear



Rear garden



Front view

Selling your home?

Choose an estate agent that
advertises on the best websites
and offers **FREE** furniture
removal for sellers!

rightmove 

Zoopla

 PrimeLocation.com

It's time to talk to Wild & Lye

01225 443322

property@wildandlye.com
28-29 Bathwick Street, Bath BA2 6NZ

