



Sladebrook Road, Southdown, Bath BA2 1LP

**For Sale** - £415,000



**Substantial 1950's bay-fronted three bedroom semi-detached house** conveniently situated at the top of Sladebrook Road, just around the corner from a good range of shops and a bus stop. The level gardens are ideal for a young family and the house further benefits from the addition of an attached garage and a store room. We recommend taking the video tour to discover what this home has to offer.



Shower Room

### Property features

Gas central heating | White PVCu framed double glazed windows and external doors | Kitchen with stainless steel gas hob and glass-fronted oven | Herringbone pattern woodblock floor in the Hall | Porch | Side pathway to back garden | Far-reaching views to the rear

### Size

107 sq. m. (1161 sq. ft.) approx.

### Tenure

Freehold

### Council Tax

Band D: £1,764.63 - 2020/2021

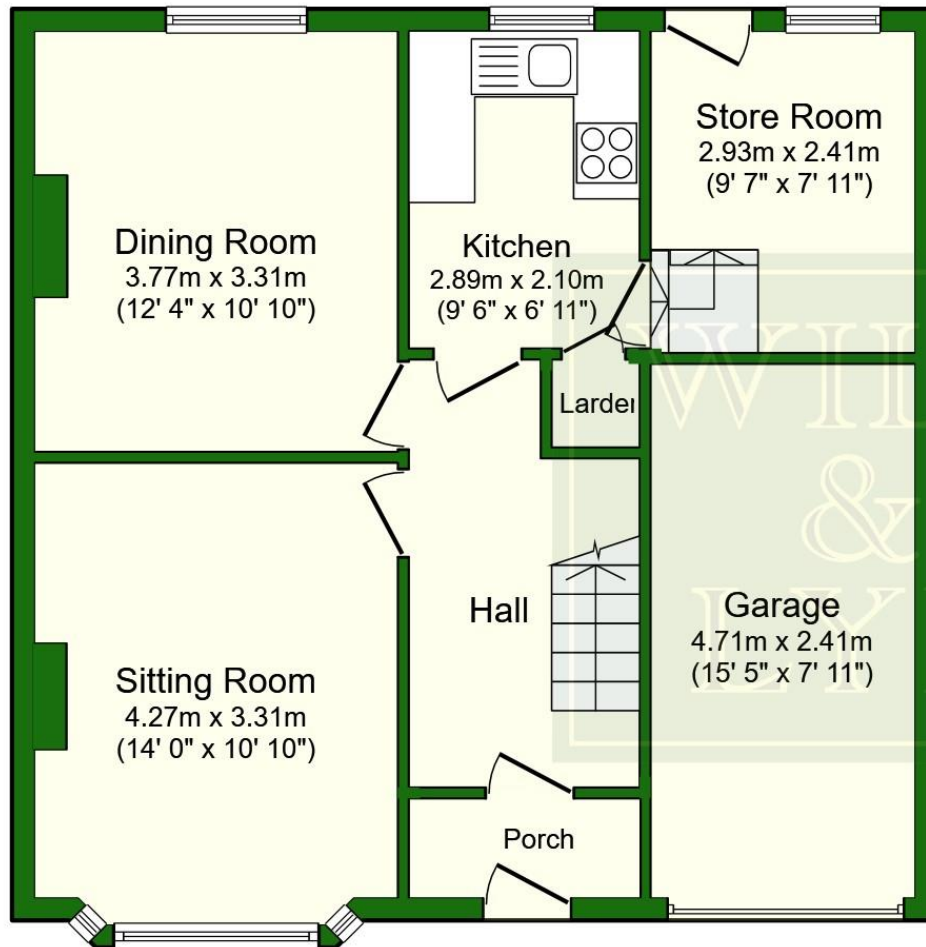


**Arrange a viewing**

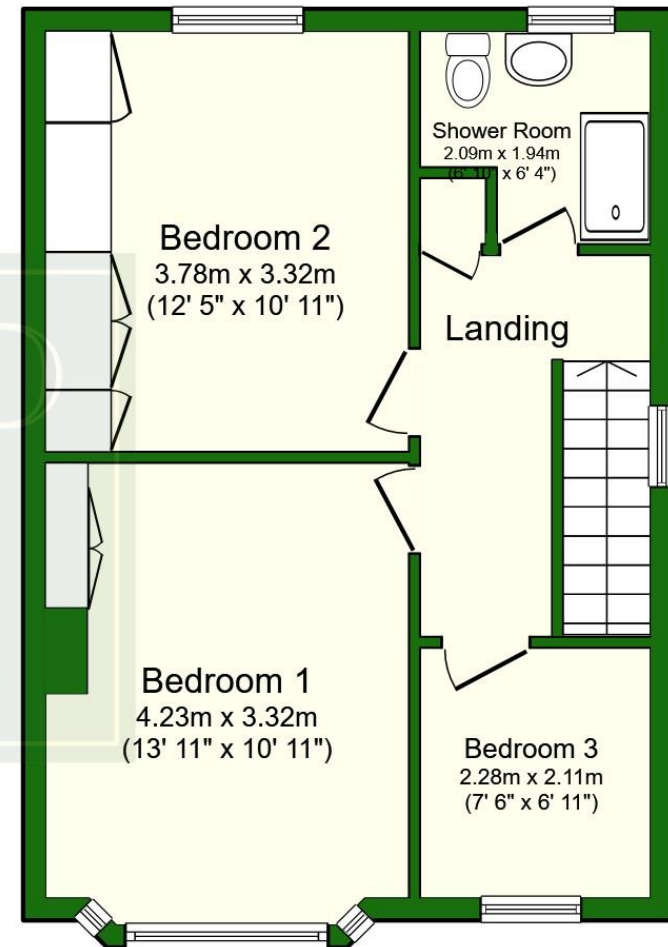
**01225 443322**

[www.wildandlye.com](http://www.wildandlye.com)

**Important Notice** 1. Particulars: These particulars are not an offer or contract, nor part of one. You should not rely on statements by Wild & Lye in the particulars or by word of mouth or in writing ("information") as being factually accurate about the property, its condition or its value. Neither Wild & Lye nor any joint agent has any authority to make any representations about the property, and accordingly any information given is entirely without responsibility on the part of the agents, seller(s) or lessor(s). 2. Photos etc: The photographs show only certain parts of the property as they appeared at the time they were taken. Areas, measurements and distances given are approximate only. 3. Regulations etc: Any reference to alterations to, or use of, any part of the property does not mean that any necessary planning, building regulations or other consent has been obtained. A buyer or lessee must find out by inspection or in other ways that these matters have been properly dealt with and that all information is correct.



**Ground Floor**



**First Floor**



Hallway



Sitting Room



Dining Room



Kitchen



Landing



Bedroom 1



Bedroom 2



Bedroom 3

The view from the back bedroom



# Selling your home?

Choose an estate agent that  
advertises on the best websites  
and offers **FREE** furniture  
removal for sellers!

rightmove 

Zoopla

 PrimeLocation.com

It's time to talk to Wild & Lye

**01225 443322**

property@wildandlye.com

28-29 Bathwick Street, Bath BA2 6NZ

