



6 Ashlin Grove

Lincoln, LN1 1LE

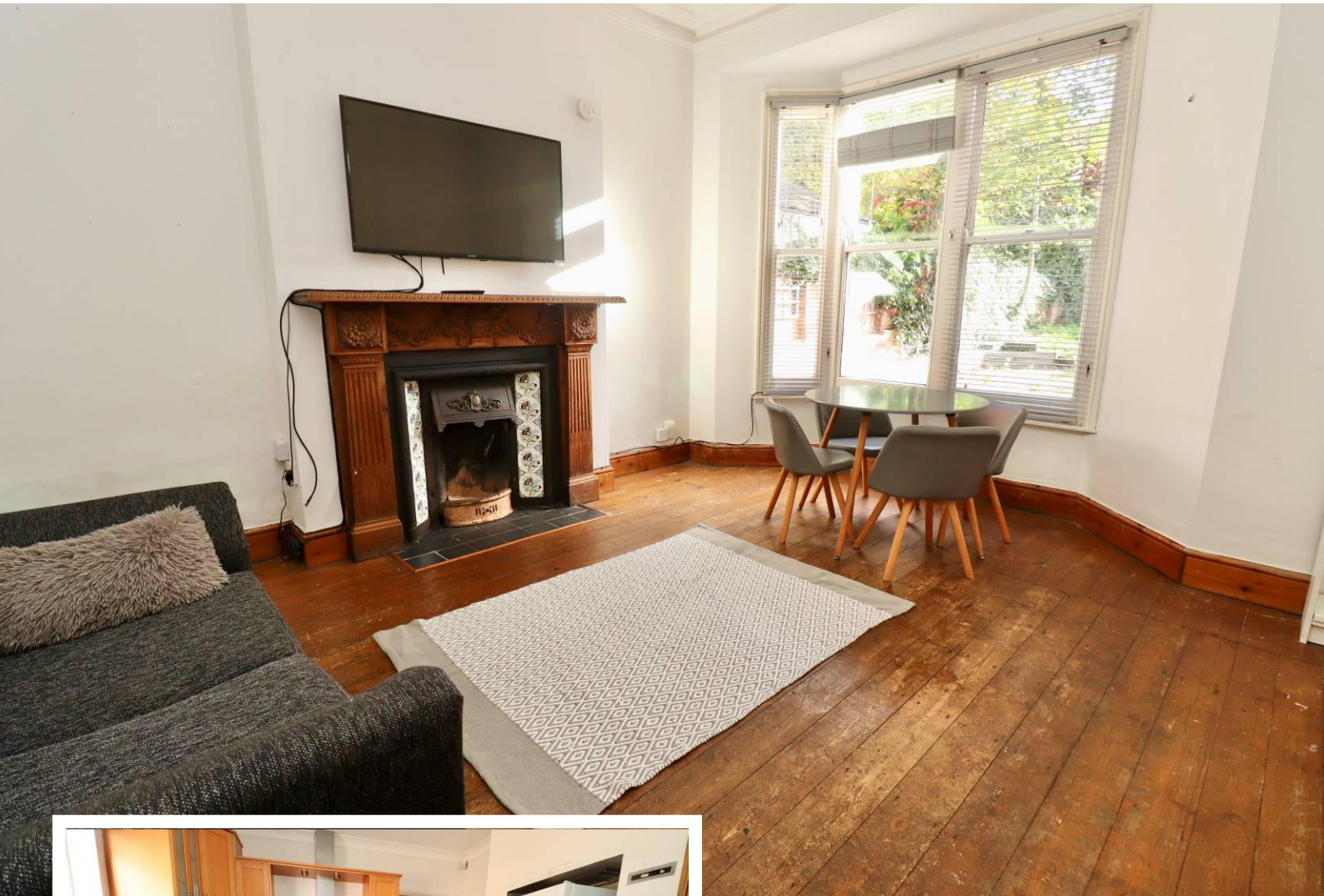


Book a Viewing!

£375,000

A substantial and characterful five bedroom Victorian end terraced house, offering generous and versatile living accommodation arranged over three storeys and showcasing a wealth of original period features throughout. The accommodation briefly comprises an Entrance Porch and welcoming Hallway, an elegant Lounge, formal Dining Room, Rear Lobby, well-appointed Kitchen, Pantry, Utility Room and a ground floor Shower Room. To the first floor are three well-proportioned Bedrooms and a family Bathroom, while the second floor provides two further Bedrooms and a useful Store Room or Walk-in Wardrobe, ideal for modern family living. Externally, the property enjoys a gated and paved front garden and a private enclosed rear garden, providing an attractive and low-maintenance outdoor space. Occupying a sought after position on a desirable tree lined street within Lincoln's ever popular West End, this fine family home offers the perfect blend of period charm and contemporary comfort. Early viewing is highly recommended to fully appreciate the space and character on offer. NO CHAIN.





SERVICES

All mains services available. Gas central heating.

EPC RATING – E.

COUNCIL TAX BAND – C.

LOCAL AUTHORITY - Lincoln City Council.

TENURE - Freehold.

VIEWINGS - By prior appointment through Mundys.

LOCATION

The historic Cathedral and University City of Lincoln has the usual High Street shops and department stores, plus banking and allied facilities, multiplex cinema, Marina and Art Gallery. The famous Steep Hill leads to the Uphill area of Lincoln and the Bailgate, with its quaint boutiques and bistros, the Castle, Cathedral and renowned Bishop Grosseteste University.



PORCH

With window to the side aspect, double opening entrance doors and tiled flooring.

ENTRANCE HALL

With staircase to the first floor, tiled flooring and radiator.

LOUNGE

12' 11" x 12' 11" (3.95m x 3.94m) With double glazed bay window to the front aspect, log burner set within a feature fire surround, original ceiling rose, decorative cornicing, picture rail and radiator.

DINING ROOM

13' 4" x 13' 0" (4.08m x 3.97m) With double glazed bay window to the rear aspect, open fire set within a feature fireplace, original ceiling rose, decorative cornicing, exposed floorboards and radiator.

REAR LOBBY

With door to the rear garden, large walk-in storage cupboard, tiled flooring and radiator.

KITCHEN

11' 10" x 10' 5" (3.62m x 3.19m) Fitted with a range of wall and base units with work surfaces over, stainless steel 1½ bowl sink with side drainer and mixer tap over, electric oven and hob, spaces for dishwasher and fridge freezer, tiled flooring and splashbacks, radiator and double glazed window to the side aspect.

LOBBY

With tiled flooring.

PANTRY

With storage shelving tiled flooring and double glazed window to the side aspect.

UTILITY ROOM

Fitted with wall and base units with work surfaces over stainless steel sink with mixer tap over, spaces for washing machine and tumble dryer, tiled flooring, splashbacks and radiator.

SHOWER ROOM

Fitted with a three-piece suite comprising of shower cubicle, wall hung wash hand basin and close coupled WC, tiled flooring, splashbacks and double glazed window to the side aspect.

FIRST FLOOR LANDING

With staircase to the second floor and radiator.

BEDROOM 1

12' 11" x 10' 9" (3.96m x 3.29m) With sash window to the front aspect, double storage cupboard and radiator.

BEDROOM 2

13' 0" x 11' 3" (3.97 m x 3.43m) With sash window to the rear aspect, cast iron fireplace and radiator

BEDROOM 3

12' 10 (max)" x 10' 4 (max)" (3.91m x 3.15m) With sash windows to the front and side aspects and radiator.





BATHROOM

Fitted with a three piece suite comprising of panelled bath, pedestal wash hand basin and close coupled WC, airing cupboard, radiator and stained glass sash window to the side.

SECOND FLOOR LANDING

With sash window to the rear.

BEDROOM 4

13' 5" x 13' 0" (4.10m x 3.97m) With sash window to the rear aspect and radiator.

BEDROOM 5

13' 0" x 10' 9" (3.97m x 3.29m) With sash window to the front aspect and radiator.

STORE ROOM

7' 10" x 6' 9" (2.41m x 2.08m) With storage shelving.

OUTSIDE

To the front of the property there is a gated front garden, paved for ease of maintenance. To the rear there is an enclosed garden laid mainly to lawn with patio seating area, mature shrubs and brick store.

WEBSITE

Our detailed website shows all our available properties and also gives extensive information on all aspects of moving home, local area information and helpful information for buyers and sellers. This can be found at mundys.net

SELLING YOUR HOME - HOW TO GO ABOUT IT

We are happy to offer FREE advice on all aspects of moving home, including a Valuation by one of our QUALIFIED/SPECIALIST VALUERS. Ring or call into one of our offices or visit our website for more details.

REFERRAL FEE INFORMATION - WHO WE MAY REFER YOU TO

Sills & Betteridge, Ringrose Law LLP, Burton & Co, Taylor Rose, Bridge McFarland, Dale & Co, Bird & Co and Gilson Gray who will be able to provide information to you on the Conveyancing services they can offer. Should you decide to use these Conveyancing Services then we will receive a referral fee of up to £150 per sale and £150 per purchase from them.

CWH, J. Walter and Callum Lyman will be able to provide information and services they offer relating to Surveys. Should you decide to instruct them we will receive a referral fee of up to £125.

Claverings will be able to provide information and services they offer relating to removals. Should you decide to instruct them we will receive a referral fee of up to £125.

Mundys Financial Services who will be able to offer a range of financial service products. Should you decide to instruct Mundys Financial Services we will receive a commission from them of £250 and in addition, the individual member of staff who generated the lead will receive £50.

BUYING YOUR HOME

An Independent Survey gives peace of mind and could save you a great deal of money. For details, including RICS Home Buyer Reports, call 01522 550088 and ask for Steven Spivey MRICS.

GETTING A MORTGAGE

We would be happy to put you in touch with our Financial Adviser who can help you work out the costs of financing your purchase.

NOTE

1. None of these services or equipment have been checked or tested.
2. All measurements are believed to be accurate but are given as a general guide and should be thoroughly checked.

GENERAL

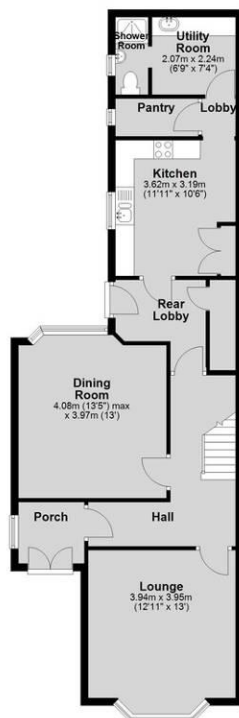
If you have any queries with regard to a purchase, please ask and we will be happy to assist. Mundys makes every effort to ensure these details are accurate however they are for themselves and the vendors (Lessors) for whom they act as Agents give notice that:

1. The details are a general outline of guidance only and do not constitute any part of an offer or contract. No person in the employment of Mundys has any authority to make or give representation or warranty in relation to this property.
2. All descriptions, dimensions, references to condition and necessary permissions for use and occupation and other details should be verified by yourself on inspection, your own advisor or conveyancer, particularly on items stated herein and not verified.

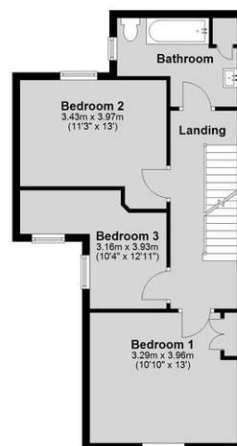
Regulated by RICS. Mundys is the trading name of Mundys Property Services LLP registered in England NO. OC 353705. The Partners are not Partners for the purposes of the Partnership Act 1890. Registered Office 29 Silver Street, Lincoln, LN2 1AS.



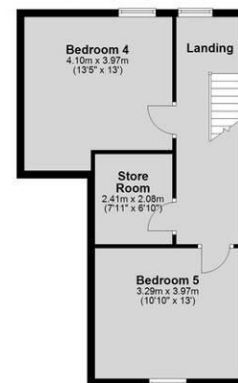
Ground Floor
Approx. 79.9 sq. metres (852.1 sq. feet)



First Floor
Approx. 50.4 sq. metres (542.9 sq. feet)



Second Floor
Approx. 45.1 sq. metres (485.9 sq. feet)



Total area: approx. 172.5 sq. metres (1856.6 sq. feet)

29 – 30 Silver Street
Lincoln
LN2 1AS
01522 510044

22 Queen Street
Market Rasen
LN8 3EH
01673 847487

22 King Street
Southwell
NG25 0EN
01636 813971

46 Middle Gate
Newark
NG24 1AL
01636 700888

Agents Note: Whilst every care has been taken to prepare these sales particulars, they are for guidance purposes only. All measurements are approximate and for general guidance purposes only and whilst every care has been taken to ensure their accuracy, they should not be relied upon and potential buyers are advised to recheck the measurements.



www.mundys.net