



2 Westfield Avenue

North Greetwell, Lincoln, LN2 4RD

£259,700

A three bedroom detached bungalow situated in the popular village of North Greetwell. The property has internal accommodation comprising of Hall, Lounge, Dining Room, Kitchen, three Bedrooms and a Shower Room. Outside to the front there are decorative gravelled beds, shrubs and driveway providing off-street parking and access to the garage. To the rear there is a lawned garden with a patio area and shrubs. The property further benefits from No Onward Chain and viewing is recommended.





SERVICES

All mains services available. Gas central heating.

EPC RATING – D

COUNCIL TAX BAND – C

LOCAL AUTHORITY - West Lindsey District Council.

TENURE - Freehold.

VIEWINGS - By prior appointment through Mundys.

LOCATION

North Greetwell is located just to the north east of the historic Cathedral and University City of Lincoln. The neighbouring villages of Cherry Willingham, Reepham and Nettleham provide a range of local amenities including shops, schooling, leisure facilities and public houses and a regular bus service into Lincoln City Centre. There is also easy access to the A46 Lincoln Bypass.



HALL

With loft access point and airing cupboard.

LOUNGE

12' 2" x 12' 0" (3.71m x 3.68m), with double glazed window to the front aspect, gas fire in a feature fireplace and radiator.

DINING ROOM

10' 11" x 8' 2" (3.33m x 2.50m), with double glazed window to the rear aspect and radiator.

KITCHEN

10' 11" x 8' 10" (3.33m x 2.70m), fitted with a range of wall and base units with work surfaces over, stainless steel 1½ bowl sink with side drainer and mixer tap over, gas oven with gas hob and extractor fan, spaces for a washing machine, fridge freezer and dishwasher, tiled walls, tiled flooring, radiator, spotlights, double glazed window to the rear aspect and door to the rear garden.



BEDROOM 1

12' 1" x 9' 9" (3.69m x 2.99m), with a range of fitted bedroom furniture including wardrobes, overbed storage and drawers, double glazed window to the front aspect and radiator.

BEDROOM 2

10' 11" x 9' 9" (3.33m x 2.99m), with a range of fitted bedroom furniture including wardrobes and over bed storage, double glazed window to the rear aspect and radiator.

BEDROOM 3

8' 11" x 7' 10" (2.73m x 2.39m), with double glazed window to the front aspect and radiator.



SHOWER ROOM

Fitted with a three piece suite comprising of shower cubicle with electric shower, close coupled WC and wash hand basin in a vanity unit with storage above and below, tiled walls, tiled flooring, radiator, spotlights and double glazed window to the rear aspect.

OUTSIDE

To the front of the property there are decorative gravelled beds, shrubs and a driveway providing off-street parking and access to the garage. To the rear there is a lawn garden, patio area and shrubs.



WEBSITE
Our detailed website shows all our available properties and also gives extensive information on all aspects of moving home, local area information and helpful information for buyers and sellers. This can be found at murdys.net

SELLING YOUR HOME - HOW TO GO ABOUT IT
We are happy to offer FREE advice on all aspects of moving home, including a Valuation by one of our QUALIFIED/SPECIALIST VALUERS. Ring or call into one of our offices or visit our website for more details.

REFERRAL FEE INFORMATION - WHO WE MAY REFER YOU TO
Sills & Betteridge, Ringrose Law LLP, Burton and Co, Bridge McFarland, Dale & Co and Gilson Gray will be able to provide information to you on the Conveyancing services they can offer. Should you decide to use these Conveyancing Services then we will receive a referral fee of up to £150 per sale and £150 per purchase from them.

CWH and J. Walter will be able to provide information and services they offer relating to Surveys. Should you decide to instruct them we will receive a referral fee of up to £125.

Claverings will be able to provide information and services they offer relating to removals. Should you decide to instruct them we will receive a referral fee of up to £125.

Murdys Financial Services will be able to offer a range of financial services products. Should you decide to instruct Murdys Financial Services we will receive a commission from them of £250 and in addition, the individual member of staff who generated the lead will receive £50.

BUYING YOUR HOME
An Independent Survey gives peace of mind and could save you a great deal of money. For details, including RICS Home Buyer Reports, call 01522 550088 and ask for Steven Spivey MRICS.

GETTING A MORTGAGE
We would be happy to put you in touch with our Financial Adviser who can help you work out the cost of financing your purchase.

NOTE
1. None of the services or equipment have been checked or tested.
2. All measurements are believed to be accurate but are given as a general guide and should be thoroughly checked.

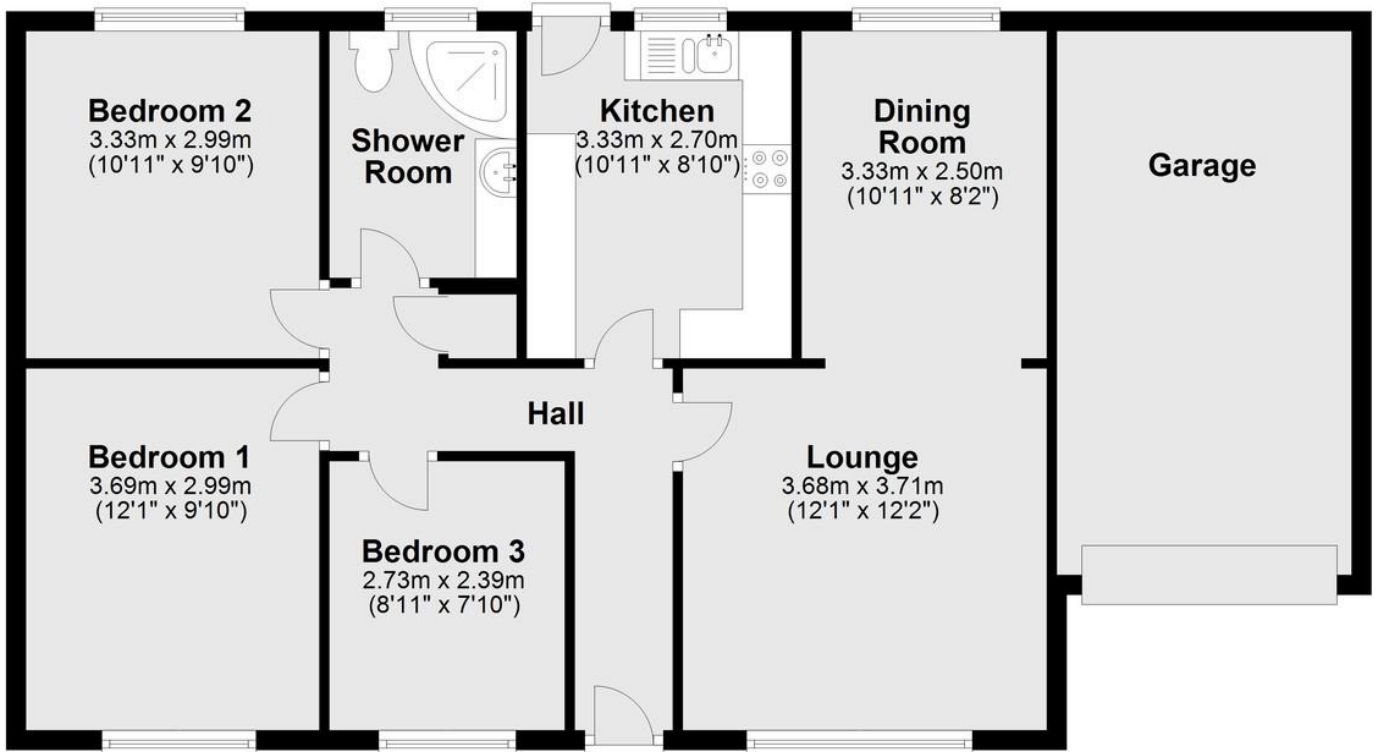
GENERAL
If you have any queries with regard to a purchase, please ask and we will be happy to assist. Murdys makes every effort to ensure these details are accurate however they are for themselves and the vendors (Lessors) for whom they act as Agents given notice that:

- The details are a general outline of guidance only and do not constitute any part of an offer or contract. No person in the employment of Murdys has any authority to make or give representation or warranty whatsoever in relation to this property.
- All descriptions, dimensions, references to condition and necessary permissions for use and occupation and other details should be verified by yourself on inspection, your own advisor or conveyancer, particularly on items stated herein and not verified.

Regulated by RICS. Murdys is the trading name of Murdys Property Services LLP registered in England NO. OC 35 3005. The Partners are not Partners for the purposes of the Partnership Act 1890. Registered Office 29 Silver Street, Lincoln, LN2 1AS.

Ground Floor

Approx. 91.3 sq. metres (982.2 sq. feet)



Total area: approx. 91.3 sq. metres (982.2 sq. feet)

For illustration purposes only.
Plan produced using PlanUp.

29 – 30 Silver Street
Lincoln
LN2 1AS

22 Queen Street
Market Rasen
LN8 3EH

Agents Note: Whilst every care has been taken to prepare these sales particulars, they are for guidance purposes only. All measurements are approximate and are for general guidance purposes only and whilst every care has been taken to ensure their accuracy, they should not be relied upon and potential buyers are advised to recheck the measurements.

