

## 1B Darnley Road, London, E9 6QH



**mcdowalls**  
**OFFICE SPACE**  
**TO LET**



**£500 Prices From**

# 1B Darnley Road, London, E9 6QH

1B Darnley Road (E9)

Rare opportunity for lease of commercial work units in two Victorian factory warehouses just off Mare Street in Hackney (E9). Multiple units available --- Various sizes (Floorplan available on request)

Full of character with tons of original rustic features. Excellent creative space for recording studios (some units are pre-fitted with recording and live rooms), photography studios, art workshops, art galleries, architect offices, gym and fitness studios, yoga studios etc. Building is adjacent to London Fields and close to Hackney Central station.

Commercial use class - E/B3/B8 ..... EPC - Band C

## 1B GROUND FLOOR

- Unit 1a - £800 (Let) (RV £3450)
- Unit 1b - £1200 (Let) (RV £11250)
- Unit 2a - £550 (Let)
- Unit 2b - £550 (Let)
- Unit 2c - £550 (Let)
- Unit 2d - £650 (Let)
- Unit 3a - £550 (Let)
- Unit 3b - £550 (Let)
- Unit 3c - £550 (Let)
- Unit 3d - £650 (Let)
- Unit 4 - £1750 (Let) (RV £18750)
- Unit 5 - £2000 (Let) (RV £16259)
- Unit 6 - £3500 (Let) (RV £34000)
- Unit 7 - £2400 (Let) (RV £20250)
- Unit 8 - £3000 (Let) (RV £20250)
- Unit 9 - £3500 (Let) (RV £37000)
- Unit 10 - £1900 (RV £13750)
- Unit 11 - £1400 (Let) (RV £6800)

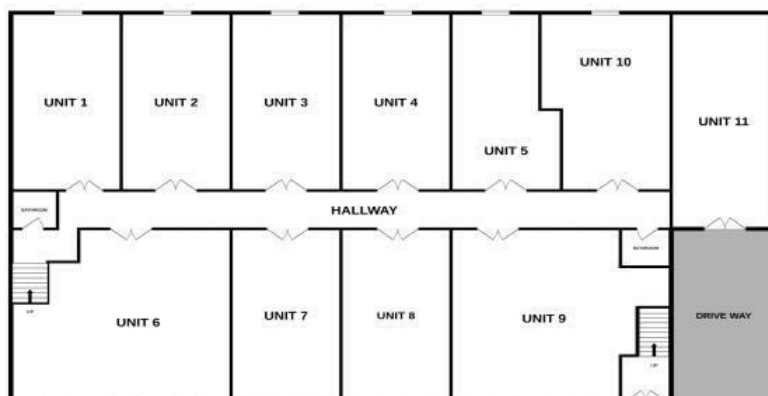
## 1B 1ST FLOOR

- Unit 12 - £1800 (Let) (RV £10750)
- Unit 13 - £1800 (Let) (RV £12250)
- Unit 14 - £1800 (Let) (RV £12250)
- Unit 15 - £1800 (Let) (RV £11500)
- Unit 16 - £1800 (Let) (RV £11250)
- Unit 17 - £1600 (Let) (RV £9600)
- Unit 18 - £2350 (RV £17250)
- Unit 19a - £1200 (Let) (RV £7500)
- Unit 19b - £1200 (Let) (RV £7500)
- Unit 20 - £1200 (Let) (RV £7400)
- Unit 21 - £2000 (Let) (RV £14000)

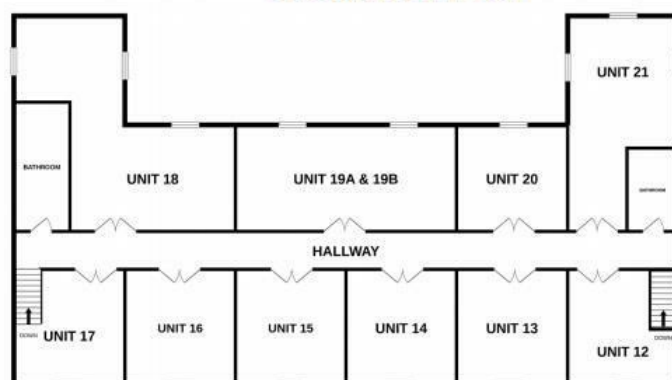


## Stephen House

1b Darnley Road E9 6HQ



## Ground Floor



## 1<sup>st</sup> Floor

Plan Not Drawn To Scale







54/56 Barking Road  
East Ham, London E6 3BP  
Telephone: (020) 8472 4422  
Property Management: (020) 8471 4224  
Fax: (020) 8471 5052  
E-mail: [eastham@mcdowalls.com](mailto:eastham@mcdowalls.com)  
Website: [www.mcdowalls.com](http://www.mcdowalls.com)

