

## Unit 2 (c) 34 High Street North, London, E6 2HJ



**£10,000 Per annum**

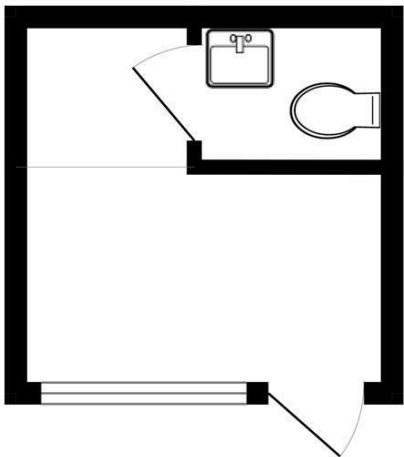
Unit 2 (c) 34 High Street North, London, E6 2HJ

34 High Street North E6 2HJ

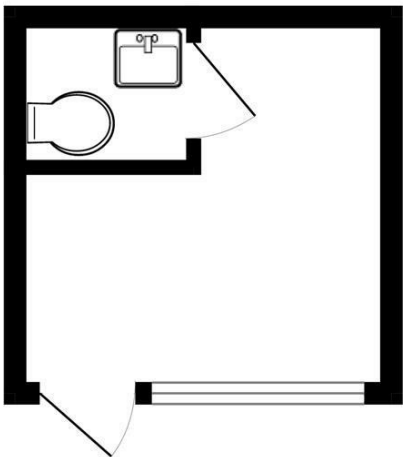
McDowalls are pleased to market a shuttered unit/office (Unit 2) just off High Street North on Thorpe Street.

Floor Space - 100 sqft  
EPC - Band C

34B HSN - UNIT 1  
97 sq.ft. (9.0 sq.m.) approx.

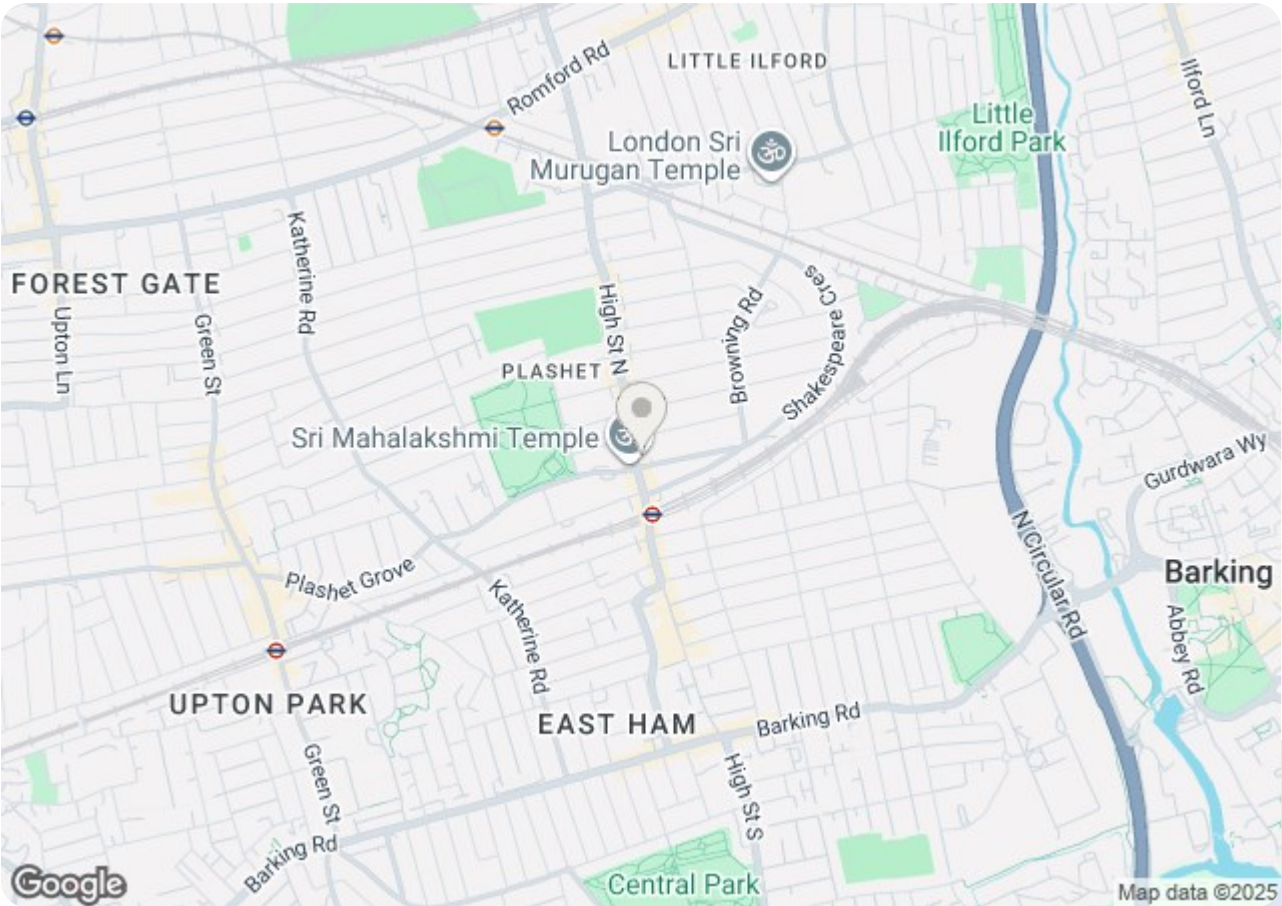



34C HSN - UNIT 2  
97 sq.ft. (9.0 sq.m.) approx.



34B & 34C HIGH STREET NORTH E6 2HJ  
TOTAL FLOOR AREA : 193 sq.ft. (17.9 sq.m.) approx.  
Whilst every attempt has been made to ensure the accuracy of the floorplan contained here, measurements of doors, windows, rooms and any other items are approximate and no responsibility is taken for any error, omission or mis-statement. This plan is for illustrative purposes only and should be used as such by any prospective purchaser. The services, systems and appliances shown have not been tested and no guarantee as to their operability or efficiency can be given.  
Made with Metropix ©2025





Energy Efficiency Rating		
	Current	Potential
Very energy efficient - lower running costs		
(92 plus) <b>A</b>		
(81-91) <b>B</b>		
(69-80) <b>C</b>		
(55-68) <b>D</b>		
(39-54) <b>E</b>		
(21-38) <b>F</b>		
(1-20) <b>G</b>		
Not energy efficient - higher running costs		
<b>England &amp; Wales</b>	EU Directive 2002/91/EC	

Environmental Impact (CO <sub>2</sub> ) Rating		
	Current	Potential
Very environmentally friendly - lower CO <sub>2</sub> emissions		
(92 plus) <b>A</b>		
(81-91) <b>B</b>		
(69-80) <b>C</b>		
(55-68) <b>D</b>		
(39-54) <b>E</b>		
(21-38) <b>F</b>		
(1-20) <b>G</b>		
Not environmentally friendly - higher CO <sub>2</sub> emissions		
<b>England &amp; Wales</b>	EU Directive 2002/91/EC	