



Finkle Court, Whittlesey Peterborough
£500,000 **Freehold**

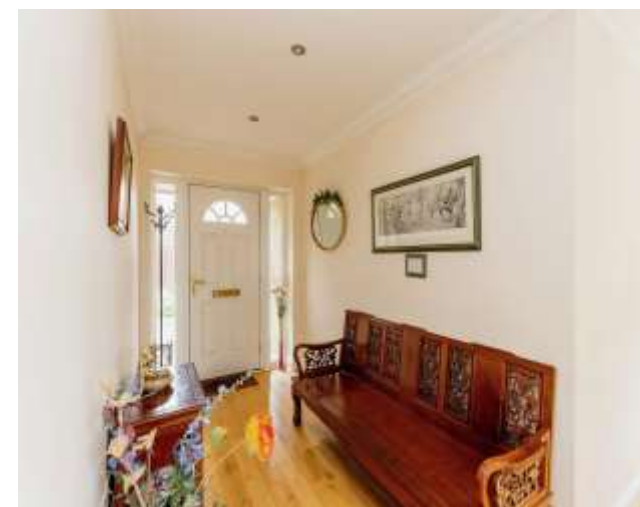
**Sharman
Quinney**

Key Features



- SOLD WITH NO ONWARD CHAIN
- Detached Bungalow
- Four Double Bedrooms
- Grand Entrance Hall
- En-Suites to Bedrooms One & Two

SOLD WITH NO CHAIN!! This beautifully presented four-bedroom detached bungalow offers an abundance of space and is within a short walk to Whittlesey Town Centre. The bungalow offers a generous living accommodation, large driveway and a double garage. This property really is one of a kind being the only bungalow on this private road with gated access. Upon entering the property, you are met by a grand entrance hall which is beaming with light. This bungalow briefly comprises; entrance hall, lounge, kitchen/breakfast room, dining room, utility room, four double bedrooms with bedroom one benefitting from its own en-suite shower room, the family bathroom which acts as a jack and jill bathroom too bedroom two and separate w/c. Outside is a mature garden mainly laid to patio, trees and mature plants. To the front of the



property is a large driveway providing ample off-road parking and a detached double garage with electric up and over doors.

Entrance Hall

Lounge - 5.9m x 4.32m (19'6" x 14'2")

Kitchen/Breakfast Room - 4.29m x 5.66m (14'1" x 18'6")

Dining Room - 3.5m x 3.81m (11'6" x 12'5")

Utility Room - 1.58m x 2.3m (5'2" x 7'8")

Bedroom One - 5.12m x 4.32m (16'8" x 14'2")

En-Suite - 0.92m x 2.1m (3'1" x 7'0")

Bedroom Two - 3.81m x 3.74m (12'5" x 12'3")

Bedroom Three - 4.32m x 3.47m (14'2" x 11'4")

Bedroom Four - 3.74m x 3.56m (12'3" x 11'7")

Jack and Jill Bathroom - 3.56m x 2.04m (11'7" x 6'7")

Detached Double Garage - 5.69m x 6.79m (18'7" x 22'3")





This floor plan is for illustrative purposes only. It is not drawn to scale. Any measurements, floor areas (including any total floor area), openings and orientation are approximate. No details are guaranteed, they cannot be relied upon for any purpose and they do not form part of any agreement. No liability is taken for any error, omission or misstatement. A party must rely upon its own inspection(s). Powered by www.focalagent.com

To view this property call Sharman Quinney on:
01733 205000

Selling your property?

Contact us to arrange a **FREE** home valuation.

 01733 205000

 46a Market Street, Whittlesey, PETERBOROUGH,
Cambridgeshire, PE7 1BD

 whittlesey@sharmanquinney.co.uk

 www.sharmanquinney.co.uk



 SCAN ME



Sharman Quinney Holdings Limited is registered in England and Wales under company number 4174227, Registered Office is Cumbria House, 16-20 Hockliffe Street, Leighton Buzzard, Bedfordshire, LU7 1GN. VAT Registration Number is 500 2481 05.

1: These particulars do not constitute part or all of an offer or contract. 2: The measurements indicated are supplied for guidance only and as such must be considered incorrect. 3: Potential buyers are advised to recheck the measurements before committing to any expense. 4: Sharman Quinney has not tested any apparatus, equipment, fixtures, fittings or services and it is the buyers interests to check the working condition of any appliances. 5: Sharman Quinney has not sought to verify the legal title of the property and buyers must obtain verification from their legal representative. 6: Intending purchasers will be asked to produce identification documentation at a later stage and we would ask your co-operation in order that there will be no delay in agreeing the sale. Ref: WHT204442 - 0001

