



Wype Road, Whittlesey Peterborough
Offers in Excess of £700,000 Freehold

**Sharman
Quinney**

Key Features



- Detached Bungalow
- Four Double Bedrooms
- Three Bathrooms
- Utility Room
- Oversized Single Garage

This stunning detached bungalow built in 2019 to an exacting standard by a reputable local builder. The property is 2,132 SQ FT and sits on a great plot with the rear garden wrapping around the property. Parking at the front for up to four cars in front of the oversized single garage and beautiful field views to the rear. The property comprises: Grand entrance hall, spacious lounge, large kitchen/diner perfect for entertaining guests, four double bedrooms with bedroom one benefitting from its own en-suite shower room and dressing area, family bathroom, separate shower room, utility room, pantry, boiler room and a comms cupboard. Outside to the front is a gravelled driveway providing space for up to four cars in front of an oversized single garage. to the rear is a large garden mainly laid to lawn with established flower borders. The garden also houses a large



shed with a kennel area which has two separate kennels. beyond the garden are beautiful field views. With the property being built in 2019, the property still has around 4 and a half years left on the builder's warrantee. This property is a must see, if you are looking for modern and size get in touch now!

Entrance Hall

Lounge - 4.17m x 7.68m (13'7" x 25'2")

Kitchen/Diner - 4.93 x 7.86m (16'2" x 25'8")

Utility Room - 3.07m x 2.16m (10'1" x 7'1")

Pantry - 1.55m x 1.34m (5'10" x 4'4")

Shower Room - 1.64m x 1.34m (5'4" x 8'6")

Bedroom One - 5.09m x 5.05m (16'7" x 16'6")

En-Suite - 1.88m x 2.89m (3'9" x 9'5")

Bedroom Two - 4.11m x 2.92m (13'5" x 9'6")

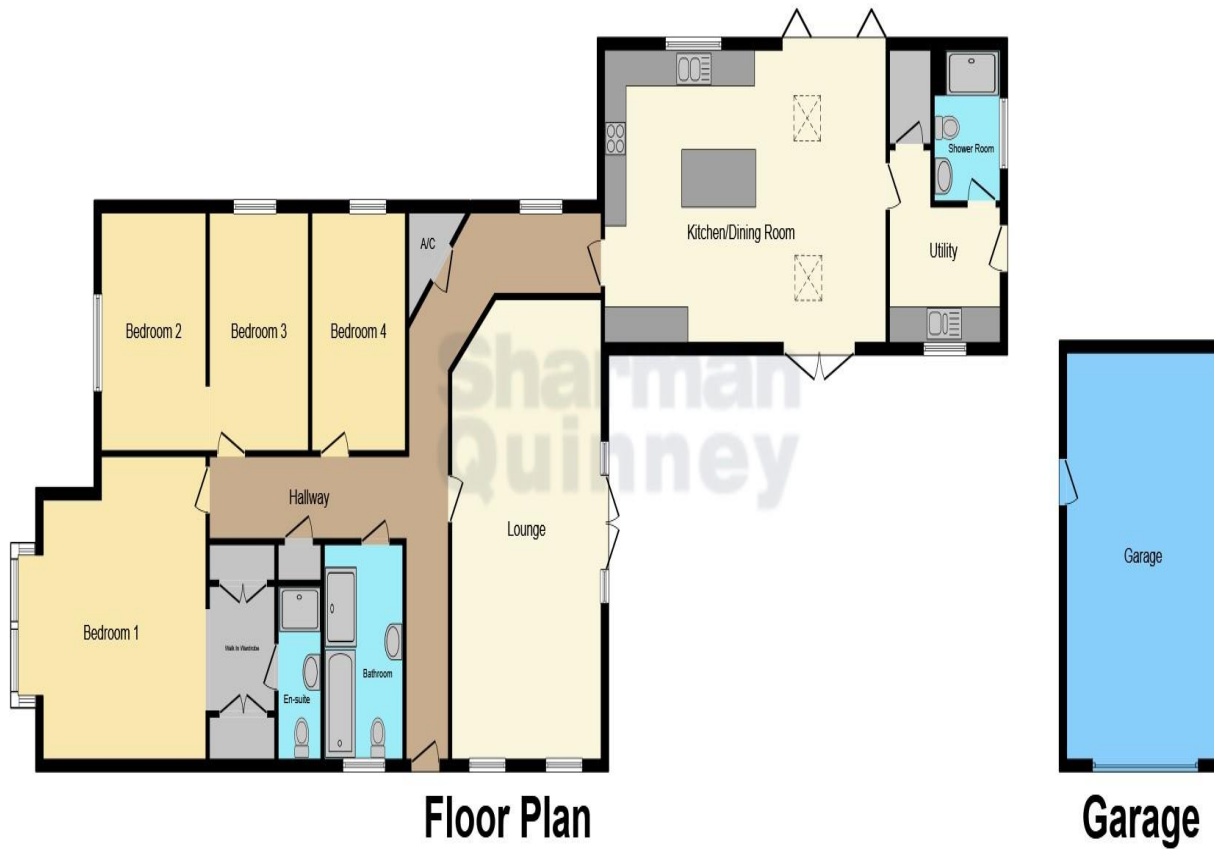
Bedroom Three - 4.11m x 2.77m (13'5" x 9'1")

Bedroom Four - 4.11m x 1.34m (13'5" x 8'6")

Family Bathroom - 3.68m x 2.49m (12'1" x 7'2")

Boiler Room





Comms Cupboard

Oversized Single Garage - 4.29m x 6.88m (14'1" x 22'6")

This floor plan is for illustrative purposes only. It is not drawn to scale. Any measurements, floor areas (including any total floor area), openings and orientation are approximate. No details are guaranteed, they cannot be relied upon for any purpose and they do not form part of any agreement. No liability is taken for any error, omission or misstatement. A party must rely upon its own inspection(s). Powered by www.focalagent.com

To view this property call Sharman Quinney on:
01733 205000

Selling your property?

Contact us to arrange a **FREE** home valuation.

 01733 205000

 46a Market Street, Whittlesey, PETERBOROUGH, Cambridgeshire, PE7 1BD

 whittlesey@sharmanquinney.co.uk

 www.sharmanquinney.co.uk



 SCAN ME



Sharman Quinney Holdings Limited is registered in England and Wales under company number 4174227, Registered Office is Cumbria House, 16-20 Hockliffe Street, Leighton Buzzard, Bedfordshire, LU7 1GN. VAT Registration Number is 500 2481 05.

1: These particulars do not constitute part or all of an offer or contract. 2: The measurements indicated are supplied for guidance only and as such must be considered incorrect. 3: Potential buyers are advised to recheck the measurements before committing to any expense. 4: Sharman Quinney has not tested any apparatus, equipment, fixtures, fittings or services and it is the buyers interests to check the working condition of any appliances. 5: Sharman Quinney has not sought to verify the legal title of the property and buyers must obtain verification from their legal representative. 6: Intending purchasers will be asked to produce identification documentation at a later stage and we would ask your co-operation in order that there will be no delay in agreeing the sale. Ref: WHT204423 - 0002

