



Brodie Place, Hampton Gardens Peterborough
£345,000 Freehold

**Sharman
Quinney**

Key Features



- Detached Property
- Three Bedrooms
- Recently Renovated
- Kitchen/Dining Room
- En-Suite to Bedroom 1
- Landscaped Garden
- Parking for up to 4 Cars

As we step inside, you'll be greeted by the warm and welcoming hallway leading you into the heart of the home and downstairs cloakroom, the lounge offers the perfect retreat to relax and unwind in after a long day's work.

The stylish kitchen/dining room featuring top of the line integrated appliances and sleek worktops has ample storage and preparation space which would be ideal for the aspiring chef, perfect for family and guests to enjoy their meals together, whilst admiring the views of the rear garden, utility room.



As we go upstairs, you'll find the three well-proportioned bedrooms, bedroom 1 boasts a refitted en-suite shower room adding a touch of luxury to your everyday routine. The additional bedrooms are perfect for the children, guests or home office depending on your needs, family bathroom.

Outside the property offers a lovely, landscaped front garden. The shared driveway leads to the main block paved drive providing ample off-road parking for 4 cars and access to the single garage which measures 5.66m x 2.84m (18'07" x 9'04"). The rear garden provides ample space to enjoy outdoor activities and is the perfect place to create your own personal oasis.

Entrance hall

Downstairs Cloakroom

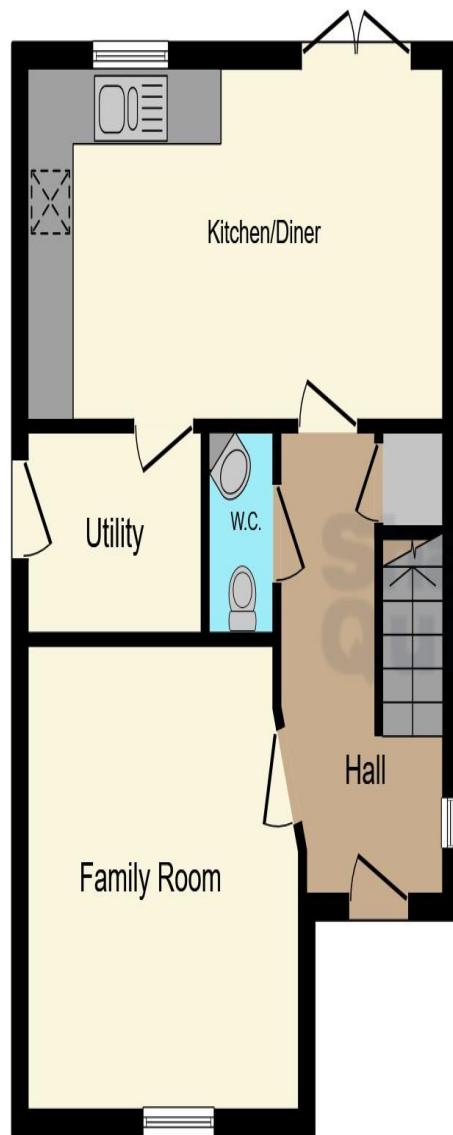
Lounge
3.91m x 3.70m (12'10" x 12'02")

Kitchen/ Dining room
5.44m x 2.82m (17'10" x 9'03")

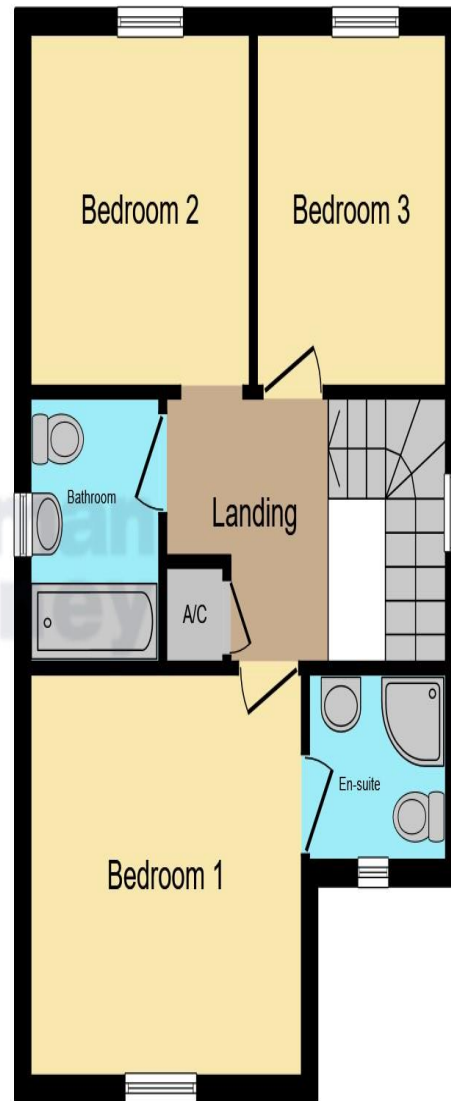
Utility room
2.29m x 1.63m (7'06" x 5'04")

First floor landing
3.89m x 3.23m (12'09" x 10'07")





Ground Floor



First Floor

Refitted en-suite

Bedroom 2
2.87m x 2.87m inc wardrobe (9'05" x 9'05" inc wardrobe)

Bedroom 3
2.87m x 2.51m (9'05" x 8'03")

Bathroom

Outside the property offers a lovely, landscaped front garden. The shared driveway leads to the main block paved drive providing ample off-road parking for 4 cars and access to the single garage which measures 5.66m x 2.84m (18'07" x 9'04"). The rear garden provides ample space to enjoy outdoor activities and is the perfect space to create your own personal oasis.

This floor plan is for illustrative purposes only. It is not drawn to scale. Any measurements, floor areas (including any total floor area), openings and orientation are approximate. No details are guaranteed, they cannot be relied upon for any purpose and they do not form part of any agreement. No liability is taken for any error, omission or misstatement. A party must rely upon its own inspection(s). Powered by www.focalagent.com

To view this property call Sharman Quinney on:
01733 346111

Selling your property?

Contact us to arrange a **FREE** home valuation.

 01733 346111

 50 Hargate Way, Hampton Hargate,
Peterborough, Cambridgeshire, PE7 8DS

 hampton@sharmanquinney.co.uk

 www.sharmanquinney.co.uk



 SCAN ME



Sharman Quinney Holdings Limited is registered in England and Wales under company number 4174227, Registered Office is Cumbria House, 16-20 Hockliffe Street, Leighton Buzzard, Bedfordshire, LU7 1GN. VAT Registration Number is 500 2481 05.

1: These particulars do not constitute part or all of an offer or contract. 2: The measurements indicated are supplied for guidance only and as such must be considered incorrect. 3: Potential buyers are advised to recheck the measurements before committing to any expense. 4: Sharman Quinney has not tested any apparatus, equipment, fixtures, fittings or services and it is the buyers interests to check the working condition of any appliances. 5: Sharman Quinney has not sought to verify the legal title of the property and buyers must obtain verification from their legal representative. 6: Intending purchasers will be asked to produce identification documentation at a later stage and we would ask your co-operation in order that there will be no delay in agreeing the sale. Ref: HAM203423 - 0004

