



Thuro Grove, Orton Goldhay, Peterborough

**£250,000** **Freehold**

**Sharman  
Quinney**

# Key Features



- Detached House
- Three Bedrooms
- Kitchen Dining Room
- Lounge
- Off Road Parking For Several Cars

As you step inside you are greeted by the inviting hallway with a downstairs cloakroom, the light and airy lounge offers a relaxing and welcoming atmosphere for you to enjoy. The kitchen dining room has ample storage space with fitted units and breakfast bar where you can enjoy your morning coffee.

Upstairs you'll find the good sized three bedrooms all providing a relaxing place to be and family bathroom.

Outside the property offers a private garden with a timber decking seating area storage shed, where you can unwind and enjoy the sunshine. There's also plenty of off-road parking to the front ensuring convenience and ease for you and your guests. Thuro Grove offers a peaceful and family



friendly neighbourhood, while still being within easy reach of local amenities including, schools, Ferry Meadows Country Park and transport links.

Entrance Hall

Downstairs Cloakroom

Lounge

5.13m x 2.92m (16'10" x 9'07")

Kitchen Dining Room

5.13m x 2.54m (16'10" x 8'04")

First Floor Landing

Bedroom 1

5.08m x 2.90m (16'08" x 9'06")

Bedroom 2

2.77m x 2.54m into recess (9'01" x 8'04" into recess)

Bedroom 3

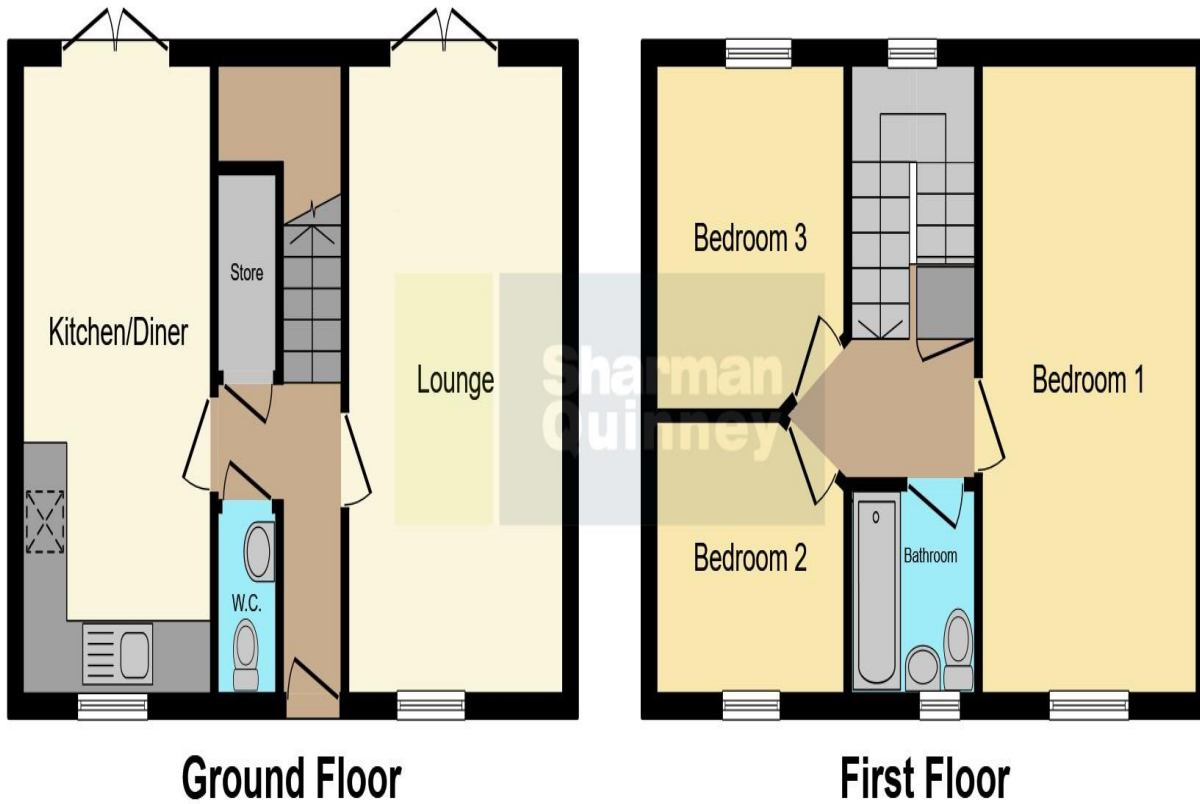
2.51m x 2.26m (8'03" x 7'05")

Bathroom

Outside the front garden has mature hedgerow and shrubs but mainly gravelled providing ample off-road parking for several cars, storage shed, the rear garden is paved with gravelled areas mature shrubs and flowers with timber decking



seating area and access to the storage shed  
measuring 4.44m x 2.41m (14'07" x 7'11")



This floor plan is for illustrative purposes only. It is not drawn to scale. Any measurements, floor areas (including any total floor area), openings and orientation are approximate. No details are guaranteed, they cannot be relied upon for any purpose and they do not form part of any agreement. No liability is taken for any error, omission or misstatement. A party must rely upon its own inspection(s). Powered by [www.focalagent.com](http://www.focalagent.com)

To view this property call Sharman Quinney on:  
**01733 346111**

# Selling your property?

Contact us to arrange a **FREE** home valuation.

 01733 346111

 50 Hargate Way, Hampton Hargate,  
Peterborough, Cambridgeshire, PE7 8DS

 hampton@sharmanquinney.co.uk

 [www.sharmanquinney.co.uk](http://www.sharmanquinney.co.uk)



 SCAN ME



Sharman Quinney Holdings Limited is registered in England and Wales under company number 4174227, Registered Office is Cumbria House, 16-20 Hockliffe Street, Leighton Buzzard, Bedfordshire, LU7 1GN. VAT Registration Number is 500 2481 05.

1: These particulars do not constitute part or all of an offer or contract. 2: The measurements indicated are supplied for guidance only and as such must be considered incorrect. 3: Potential buyers are advised to recheck the measurements before committing to any expense. 4: Sharman Quinney has not tested any apparatus, equipment, fixtures, fittings or services and it is the buyers interests to check the working condition of any appliances. 5: Sharman Quinney has not sought to verify the legal title of the property and buyers must obtain verification from their legal representative. 6: Intending purchasers will be asked to produce identification documentation at a later stage and we would ask your co-operation in order that there will be no delay in agreeing the sale. Ref: HAM203347 - 0001

