



Princess Grove, Market Deeping, Peterborough  
**OIEO £336,000 Freehold**

**Sharman  
Quinney**

# Key Features



- Detached Three Storey House
- Master En Suite
- Kitchen/Diner
- Four Bedrooms
- Private Rear Garden

## Accommodation Includes

Front door to:

Entrance hall

Stairs to first floor and landing, radiator.

Cloakroom

Comprising wc, wash hand basin, radiator.

Lounge

3.20m x 5.31m (10'6" x 17'5"). French doors to rear aspect, radiator, wood flooring.



#### Kitchen Diner

2.96m x 6.31m (9'8" x 20'8"), Comprising of a range of base and eye level units with worktops over, sink with mixer tap, integrated fridge freezer, integrated dishwasher, eye level double oven, gas hob and extractor, window to front aspect, window to rear aspect.

#### Utility Room

2.11m x 1.48m (6'11" x 4'10"). Fitted units with worktop space over, sink, plumbing for washing machine, door to garden.

#### Stairs to First Floor and Landing

Radiator, window to rear, airing cupboard, stairs to second floor.

#### Master Bedroom

3.21m x 5.31m (10'6" x 17'5"). Window to front and rear aspect, two radiators, door to:

#### En Suite

Fitted with a three-piece suite comprising of pedestal wash hand basin, wc, shower cubicle, radiator, window to front.

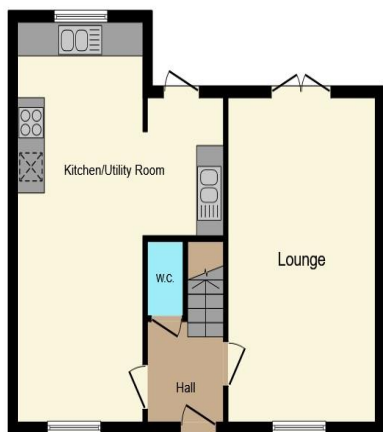
#### Bedroom Three

3.17m x 2.80m (10'4" x 9'2"). Window to front, radiator.

#### Family Bathroom

Comprising panel bath, pedestal wash hand basin, wc, radiator, window to rear aspect.

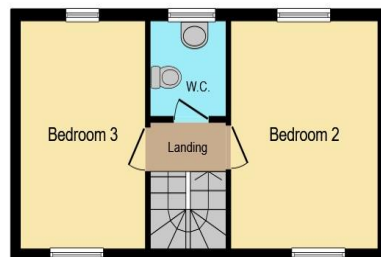




**Ground Floor**



**First Floor**



**Second Floor**

This floor plan is for illustrative purposes only. It is not drawn to scale. Any measurements, floor areas (including any total floor area), openings and orientation are approximate. No details are guaranteed, they cannot be relied upon for any purpose and they do not form part of any agreement. No liability is taken for any error, omission or misstatement. A party must rely upon its own inspection(s). Powered by [www.focalagent.com](http://www.focalagent.com)

## Stairs to Second Floor and Landing

### Cloakroom

Comprising wash hand basin, wc, window to rear, radiator.

### Bedroom Two

4.22m x 3.20m (13'10" x 10'6"). Window to front aspect, radiator, Velux style window to rear aspect.

### Bedroom Four

4.22m x 2.79m (13'10" x 9'2"). Window to front aspect, radiator, loft access, Velux style window to rear aspect.

### Outside

The enclosed private rear garden is laid to lawn with patio area, brick wall and timber fence surround with side gate access. A courtesy door leads to the garage with power and light connected with up and over door. To the front there is a shrubbed border garden with driveway to the side leading to the garage.

To view this property call Sharman Quinney on:  
**01778 343322**

# Selling your property?

Contact us to arrange a **FREE** home valuation.

 01778 343322

 25 Market Place, Market Deeping,  
PETERBOROUGH, Cambridgeshire, PE6 8EA

 [marketdeeping@sharmanquinney.co.uk](mailto:marketdeeping@sharmanquinney.co.uk)

 [www.sharmanquinney.co.uk](http://www.sharmanquinney.co.uk)



 SCAN ME



Sharman Quinney Holdings Limited is registered in England and Wales under company number 4174227, Registered Office is Cumbria House, 16-20 Hockliffe Street, Leighton Buzzard, Bedfordshire, LU7 1GN. VAT Registration Number is 500 2481 05.

1: These particulars do not constitute part or all of an offer or contract. 2: The measurements indicated are supplied for guidance only and as such must be considered incorrect. 3: Potential buyers are advised to recheck the measurements before committing to any expense. 4: Sharman Quinney has not tested any apparatus, equipment, fixtures, fittings or services and it is the buyers interests to check the working condition of any appliances. 5: Sharman Quinney has not sought to verify the legal title of the property and buyers must obtain verification from their legal representative. 6: Intending purchasers will be asked to produce identification documentation at a later stage and we would ask your co-operation in order that there will be no delay in agreeing the sale. Ref: MRD204358 - 0005

