



West End Road, Maxey, Peterborough
£325,000 Freehold

**Sharman
Quinney**

Key Features



- Village Location
- Extended Four Bedroom Home
- Semi Detached
- Kitchen/Diner
- Separate First Floor Shower

Accommodation Includes

Front door to:

Entrance Porch
Door to:

Hallway
Radiator, tiled floor, stairs to first floor and landing, under stairs cupboard.

Lounge
3.46m x 5.04m (11'4" x 16'6"). Window to front aspect, multi fuel stove with tiled feature surround.



Kitchen Diner

5.34m x 4.90m (17'6" x 16'1"). Fitted with a range of base and eye level units with worktops over, sink with mixer tap, integrated eye level oven with hob and extractor, space for fridge freezer, plumbing for dishwasher.

Utility Area

1.92m x 2.05m (6'3" x 6'8"). Velux window, window to rear aspect, door to side leading to garden.

Stairs to First Floor and Landing

Loft access, radiator.

Bedroom One

4.28m x 3.51m (14' x 11'6"). Window to front, built in double wardrobe, radiator.

Bedroom Two

3.64m x 3.09m (11'11" x 10'1"). Window to rear, radiator, airing cupboard.

Bedroom Three

4.39m x 2.66m (14'5" x 8'8"). Window to front, radiator.

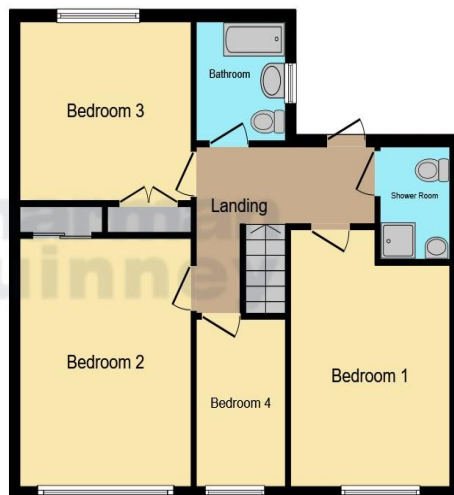
Bedroom Four

1.82m x 2.88m (5'11" x 9'5"). Window to front, radiator.

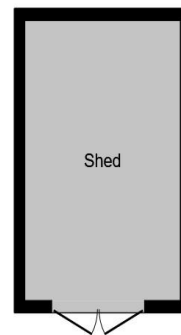




Ground Floor



First Floor



Outbuilding

This floor plan is for illustrative purposes only. It is not drawn to scale. Any measurements, floor areas (including any total floor area), openings and orientation are approximate. No details are guaranteed, they cannot be relied upon for any purpose and they do not form part of any agreement. No liability is taken for any error, omission or misstatement. A party must rely upon its own inspection(s). Powered by www.focalagent.com

Bathroom

Fitted with a three piece suite comprising of a panel bath with shower over, floating sink, wc, heated towel rail, window to side.

Shower Room

Fitted with a three piece suite comprising shower cubicle, wc, vanity wash hand basin, with cupboard below, heated towel rail, window to side.

Outside

The rear garden is enclosed, mainly laid to lawn, with patio seating area. There is an additional hardstanding paved area leading from the rear of the car port to a timber built shed.

To the front there is a lawn with mature borders and driveway leading to a car port with electric roller door to the front and rear opening providing access to the rear garden.

To view this property call Sharman Quinney on:
01778 343322

Selling your property?

Contact us to arrange a **FREE** home valuation.

 01778 343322

 25 Market Place, Market Deeping,
PETERBOROUGH, Cambridgeshire, PE6 8EA

 marketdeeping@sharmanquinney.co.uk

 www.sharmanquinney.co.uk



 SCAN ME



Sharman Quinney Holdings Limited is registered in England and Wales under company number 4174227, Registered Office is Cumbria House, 16-20 Hockliffe Street, Leighton Buzzard, Bedfordshire, LU7 1GN. VAT Registration Number is 500 2481 05.

1: These particulars do not constitute part or all of an offer or contract. 2: The measurements indicated are supplied for guidance only and as such must be considered incorrect. 3: Potential buyers are advised to recheck the measurements before committing to any expense. 4: Sharman Quinney has not tested any apparatus, equipment, fixtures, fittings or services and it is the buyers interests to check the working condition of any appliances. 5: Sharman Quinney has not sought to verify the legal title of the property and buyers must obtain verification from their legal representative. 6: Intending purchasers will be asked to produce identification documentation at a later stage and we would ask your co-operation in order that there will be no delay in agreeing the sale. Ref: MRD204207 - 0004

